

**CORPORATE
ASSETS INC**

ONLINE AUCTION

**MATERIAL HANDLING AND
FABRICATING EQUIPMENT**



**Thursday, July 9
10:30 AM EDT**

**MARK YOUR
CALENDARS!**

380 Dewitt Rd,
Stoney Creek, ON, L8E 2T2

INSPECTION: Wednesday, July 8 from 9 AM to
4 PM EDT.

LIVE WEBCAST ONLY BidSpotter

LATE MODEL TRUCKS, FORKLIFTS & FABRICATING EQUIPMENT



AUCTION CONDUCTED BY:

CORPORATE ASSETS INC

"Let Our Experience Be Your #1 Asset"™

373 Munster Avenue, Toronto, ON, Canada M8Z 3C8

www.corpassets.com • 416.962.9600 • info@corpassets.com

WELL-MAINTAINED HEAVY-DUTY LOGISTICS EQUIPMENT AVAILABLE

2015



INTERNATIONAL 7600 SBA 6X4 tandem-axle flat deck crane truck

2013



PETERBILT 367 T/A tandem-axle roll-off crane truck

2005



ONLY 5,531 HRS

6,000 LB. CAPACITY

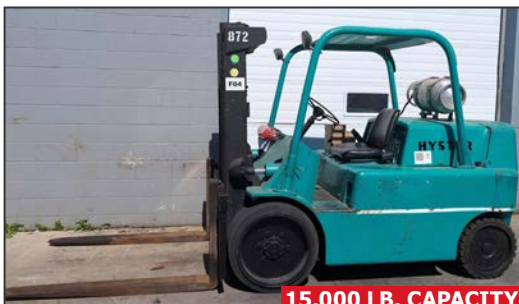
JCB 930 RTFL 4WD heavy duty rough terrain diesel forklift

5,726 HRS



6,000 LB. CAPACITY

CASE 586G rough terrain diesel forklift



15,000 LB. CAPACITY

HYSTER S150A LPG forklift



8,441 HRS

8,000 LB. CAPACITY

TOYOTA 8FG35U LPG forklift

CRANE TRUCKS

INTERNATIONAL (2015) 7600 SBA 6X4 tandem-axle flat deck crane truck with NAVISTAR A390 12.4L 6-cylinder diesel engine; EATON FULLER 10-speed manual transmission; HIAB (2021) X-CLX 148B-3 loader crane w/ 4,300 kg. max. cap., 40' max. boom reach, XS DRIVE remote operator control, stabilizers; 8'x26' deck; 494,314 km (recorded at time of listing); VIN: 1HTGSSNT4FH717053

PETERBILT (2013) 367 T/A tandem-axle roll-off crane truck with CUMMINS ISX15 450 HP 16 14.9L 6-cylinder turbo diesel engine; EATON FULLER 13-speed manual transmission; 20,000 lbs. front axle; 23,000 lbs. rear axles; PTO; 20' steel roll-off deck; HIAB (2012) 200 C-3 loader crane w/ 7,000 kg. max. cap., 52' max. boom reach, stabilizers; WARN 30,000 lb. cap. hydraulic winch; 769,678 km (recorded at time of listing); VIN: 1NPTL40X8DD201449

CONTACT 416.962.9600 TO CONSIGN EQUIPMENT AT AN UPCOMING AUCTION

LATE MODEL OFFERING OF MATERIAL HANDLING EQUIPMENT AVAILABLE

2008



8,177 HRS

6,000 LB. CAPACITY

CATERPILLAR C6000 LPG forklift

2005



4,000 LB. CAPACITY

KOMATSU FG20ST-14 LPG forklift

2016



4,000 LB. CAPACITY

RAYMOND 4700-C40TT 48V electric forklift

2011



3,000 LB. CAPACITY

CROWN SC5225-30 36V 3-wheel electric forklift

2015

2 AVAILABLE



3,000 LB. CAPACITY

RAYMOND DR30TT 36V electric deep reach truck

2014



4,000 LB. CAPACITY

RAYMOND EZ-R40TT 36V electric reach truck

TO SCHEDULE AN AUCTION CONTACT 416.962.9600



5/8" X 240" MAX DIAMETER CAPACITY

BLUE VALLEY FLANGER 6-1100 flanging machine



500 TON

MASTEEL MBHSA 14500 CNC hydraulic press brake



96 TON

ALLSTEEL 95T-6 CNC hydraulic press brake



125 TON

HILL ACME MODEL 7 hydraulic ironworker



16" X 40" CHUCK

CHEVALIER FSG-1640AD hydraulic surface grinder



CHEVALIER FSG-618M surface grinder



2008

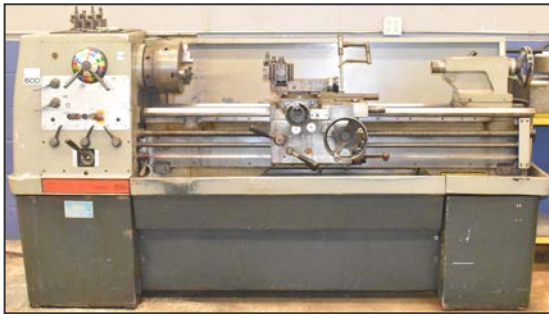
5/8" X 14' CAPACITY

ERMAK CNCHVR14X5/8 CNC hydraulic shear



0.75" X 8' CAPACITY

CINCINNATI SERIES 6208 mechanical squaring shear



COLCHESTER TRIUMPH 2000 engine lathe



View of vertical turret milling machines



BERGONZI TM50 5' radial arm drill



36" THROAT

STARTRITE 316H variable speed vertical band saw



BAXTER MODEL 1153 VERTICUT band saw



3 HP

SWEED 517AE steel banding scrap chopper

ALSO: A large selection of hardware comprising brass, stainless and black plumbing fittings, brass valves, fastening hardware, wiring supplies, electrical wire, transformers, pneumatic and hydraulic fittings, assembly hardware, conduit, wire loom & MUCH MORE!

TO SCHEDULE AN AUCTION CONTACT 416.962.9600

MATERIAL HANDLING AND FABRICATING EQUIPMENT

Thursday, July 9
Stoney Creek, Ontario, Canada



ONLY 715 HRS

230 KW (300 HP)

ONAN-CUMMINS MODEL 230DFAB skid-mounted industrial standby diesel gen-set



2024

THEO MA1-65 portable air cooled laser welder



2015

2 AVAILABLE

MILLER DYNASTY 350 digital welding power source



5/16" TO 2" RANGE

G.B.C. CH.26 automatic self propeller plate beveller



2020

5.3 TON

DRAKE single circuit type packaged air cooled chiller



BLUE GIANT push die lifter

THIS IS A PARTIAL LISTING ONLY! FOR FURTHER INFORMATION, PLEASE VISIT WWW.CORPASSETS.COM

AUCTION DETAILS

LIVE WEBCAST ONLY

INSPECTION

Wednesday, July 8 from 9 AM to 4 PM or by appointment. Please email info@corpassets.com to arrange.

REMOVAL

All assets must be removed no later than Friday, July 24 BY APPOINTMENT ONLY. Please email info@corpassets.com to arrange.

TERMS

Corporate Assets Inc. assumes no liability for errors or omissions in this brochure. Corporate Assets Inc. expressly reserves the right to determine the manner of conducting the auction as it may deem appropriate. All subject to prior sale.

PAYMENT

A Buyer's Premium will apply at this sale. International & online bidders may need a refundable deposit to bid. **SALE WILL BE CONDUCTED IN CAD.**

Please refer to our website at www.corpassets.com or call 416.962.9600 for further information. Pour les services en français, composez le 1.855.583.5551

We Accept



Please visit our website as specific terms and conditions may apply.

BID ONLINE AT: **BidSpotter**

AFFILIATIONS



©2026 CORPORATE ASSETS INC. ALL RIGHTS RESERVED.

SURPLUS EQUIPMENT?

TURN IDLE ASSETS INTO CASH!

WE BUY & SELL YOUR SURPLUS MACHINERY

ONE MACHINE OR ENTIRE PLANTS, WE HAVE OVER 60 YEARS EXPERIENCE TO SELL YOUR EQUIPMENT AT FAIR MARKET VALUE.

CONTACT US TODAY TO LEARN MORE! 416.962.9600

SUBSCRIBE TO OUR NEWSLETTER AND GET THE LATEST AUCTION UPDATES

CORPORATE ASSETS INC
corpassets.com/newsletter-signup