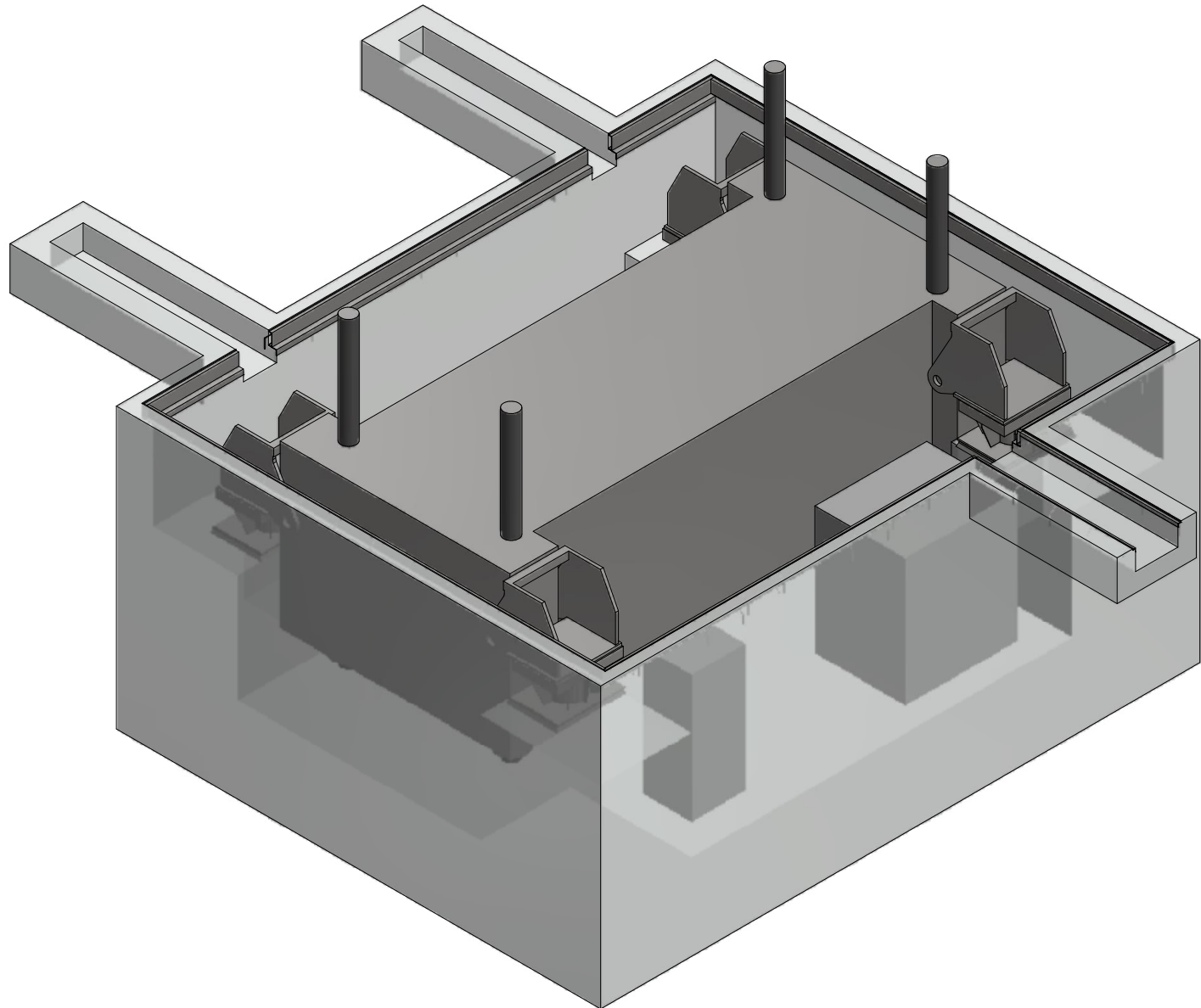
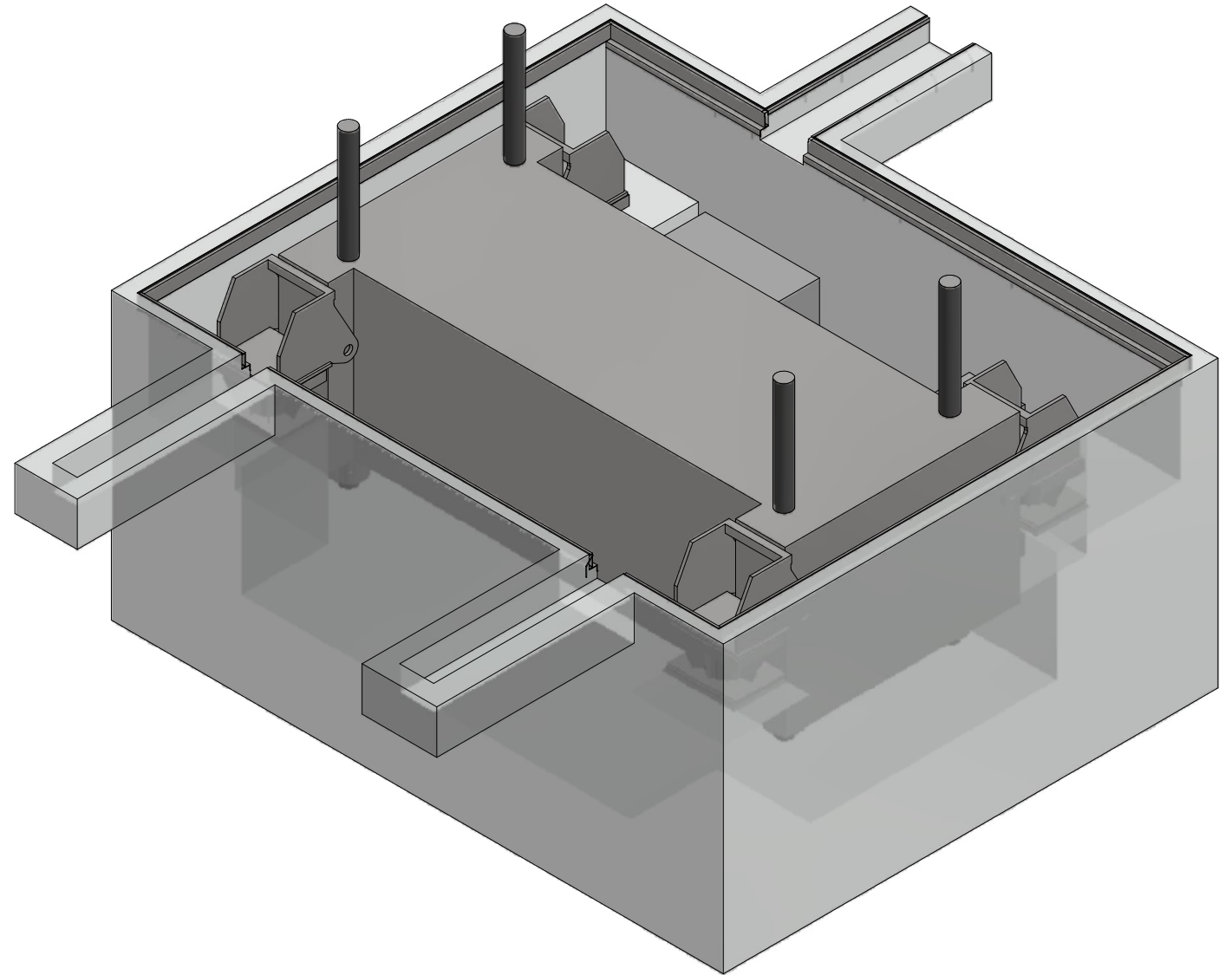


REVISION	DATE	DESCRIPTION
1	01/11/2017	PIT DIMENSION CHANGE

xq: THIS DRAWING AND THE INFORMATION IT HOLDS IS THE PROPERTY OF WESTERN MECHANICAL ELECTRICAL MILLWRIGHT SERVICES LTD. AND IS NOT TO BE LOANED COPIED OR DISCLOSED WITHOUT WRITTEN PERMISSION.



PRELIMINARY
NOT FOR CONSTRUCTION



Western Mechanical
Electrical
Millwright Services Ltd.
160 Brock St., Barrie, Ontario L4N 2M4 Tel (750) 737-4135 Fax (705) 737-1765

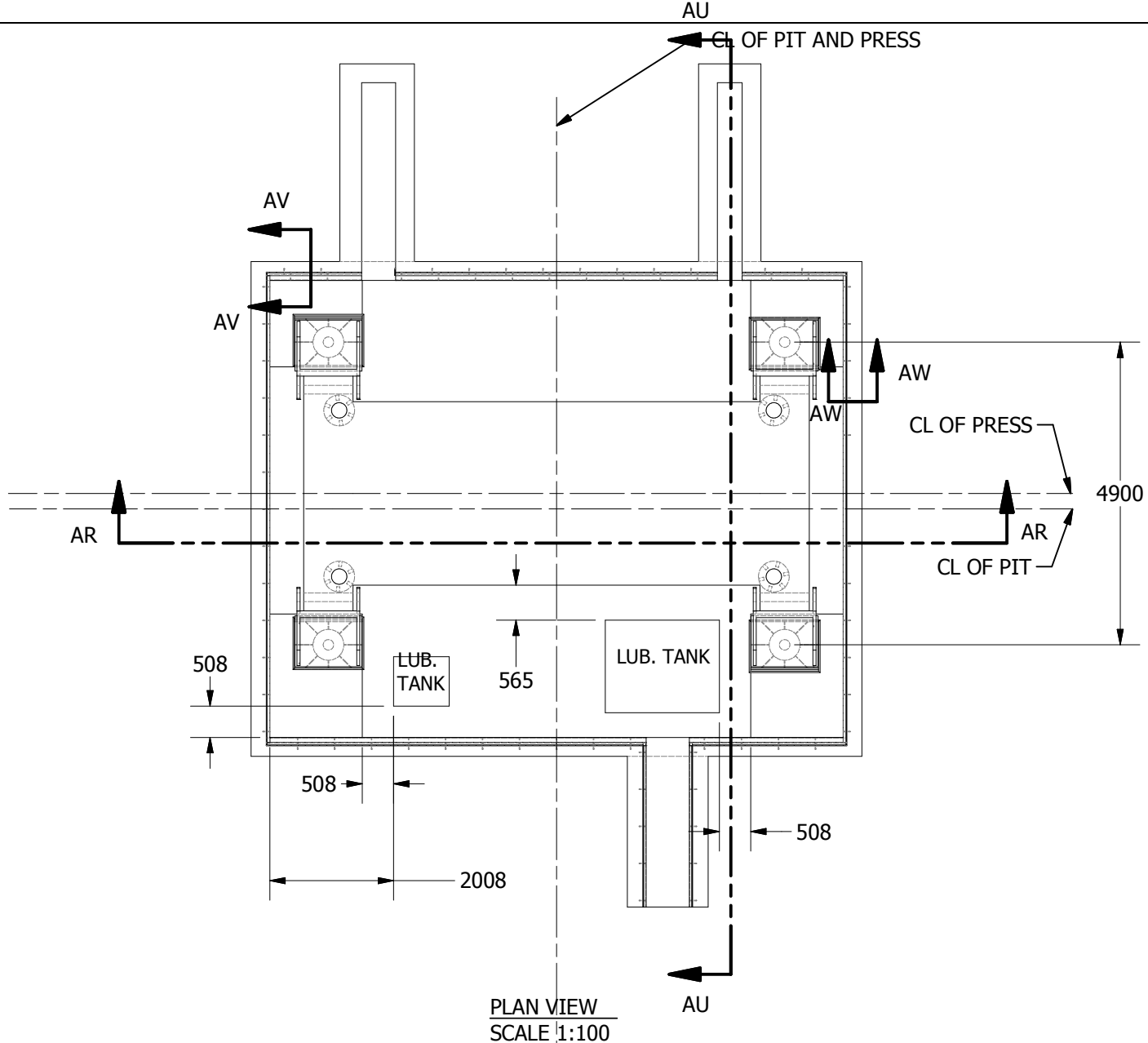
CUSTOMER	DRAWN BY	CHECKED BY
JP BOWMAN TOOL	RS	
PROJECT	DATE	DATE
1500 TON PRESS FOUNDATION	01/11/2017	
DRAWING	SCALE	PROJECT NO.
GENERAL ARRANGEMENT	N.T.S	67151
	MATERIAL	DRAWING NO.
		101

REVISION	DATE	DESCRIPTION
1	01/11/2017	PIT DIMENSION CHANGE

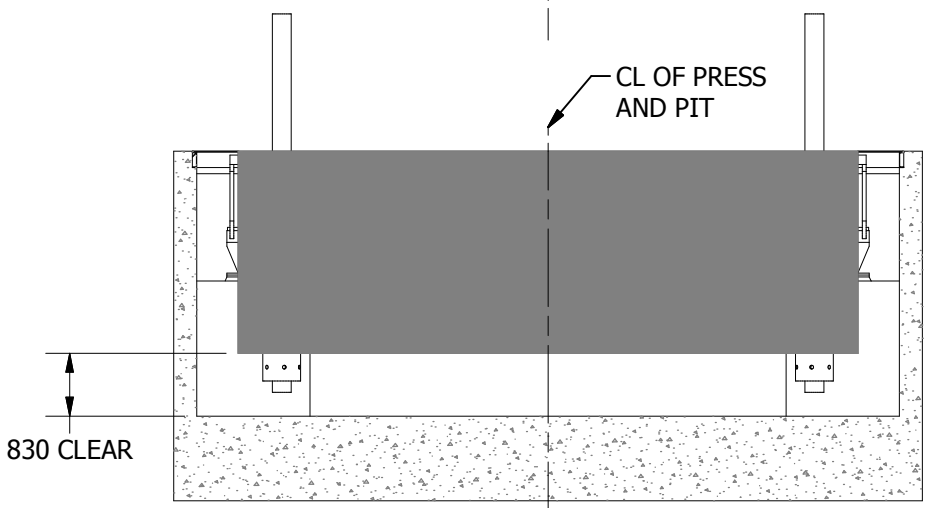
xq: THIS DRAWING AND THE INFORMATION IT HOLDS IS THE PROPERTY OF WESTERN MECHANICAL ELECTRICAL MILLWRIGHT SERVICES LTD. AND IS NOT TO BE LOANED COPIED OR DISCLOSED WITHOUT WRITTEN PERMISSION.

**PRELIMINARY
NOT FOR CONSTRUCTION**

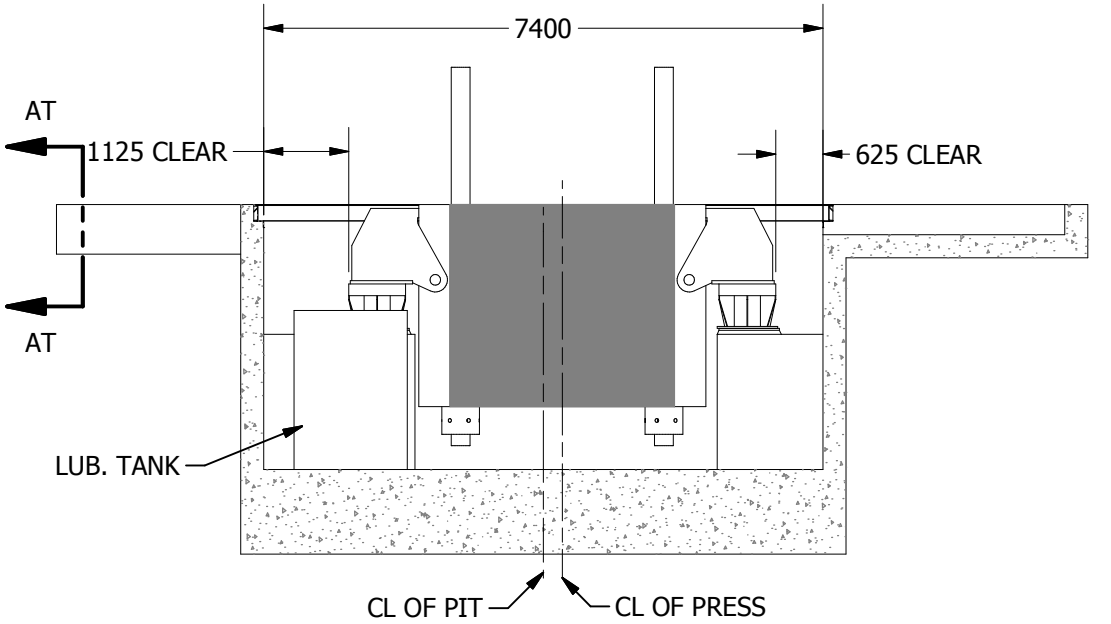
**NOTE:
DIMENSIONS OF LUB. TANKS TO
BE CONFIRMED LATER**



PLAN VIEW
SCALE 1:100



SECTION AR-AR
SCALE 1 / 100



SECTION AU-AU
SCALE 1 / 100

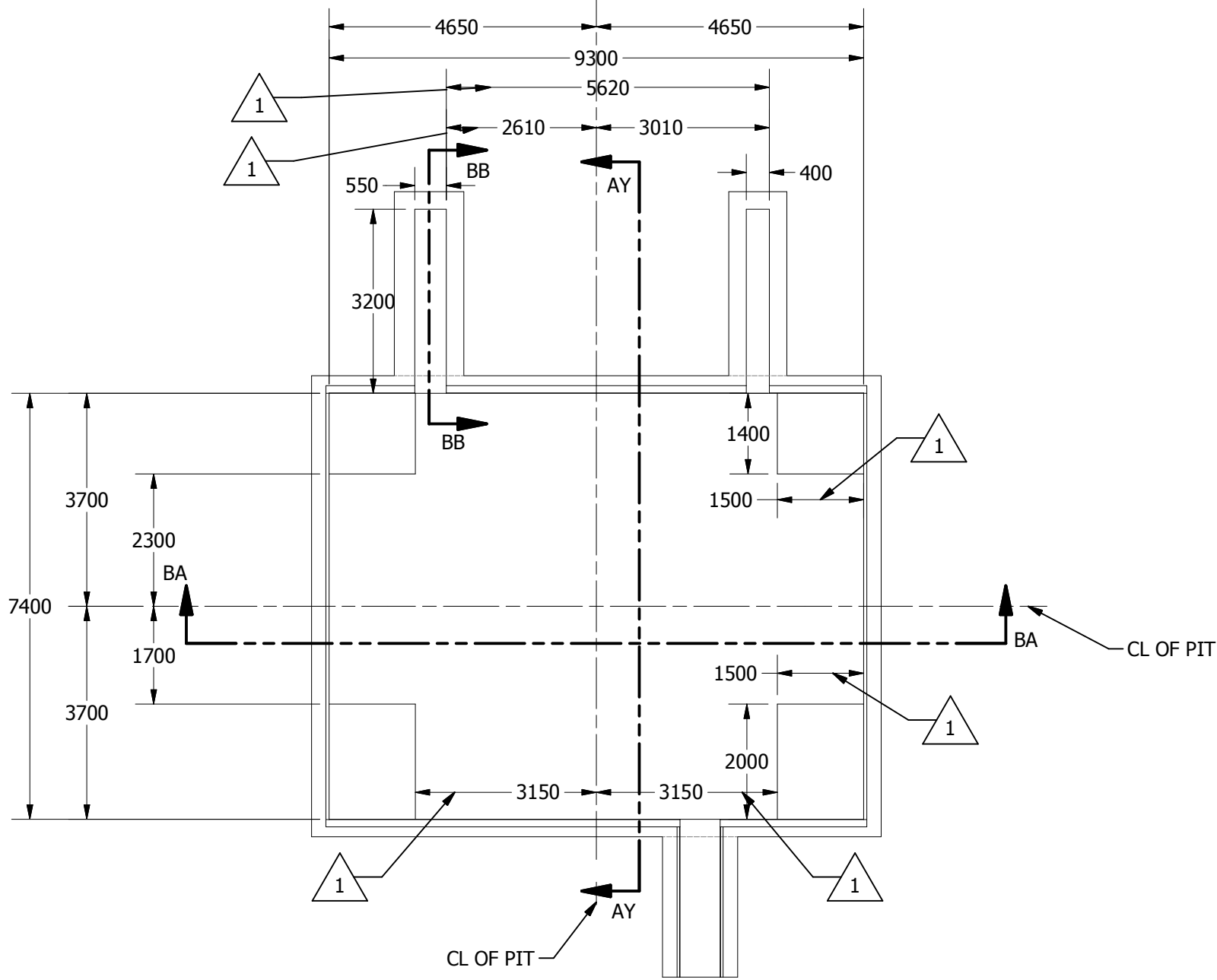
PLEASE CONFIRM SPACE
REQUIRED FOR SERVICES

Western Mechanical
Electrical
Millwright Services Ltd.
160 Brock St., Barrie, Ontario L4N 2M4 Tel (750) 737-4135 Fax (705) 737-1765

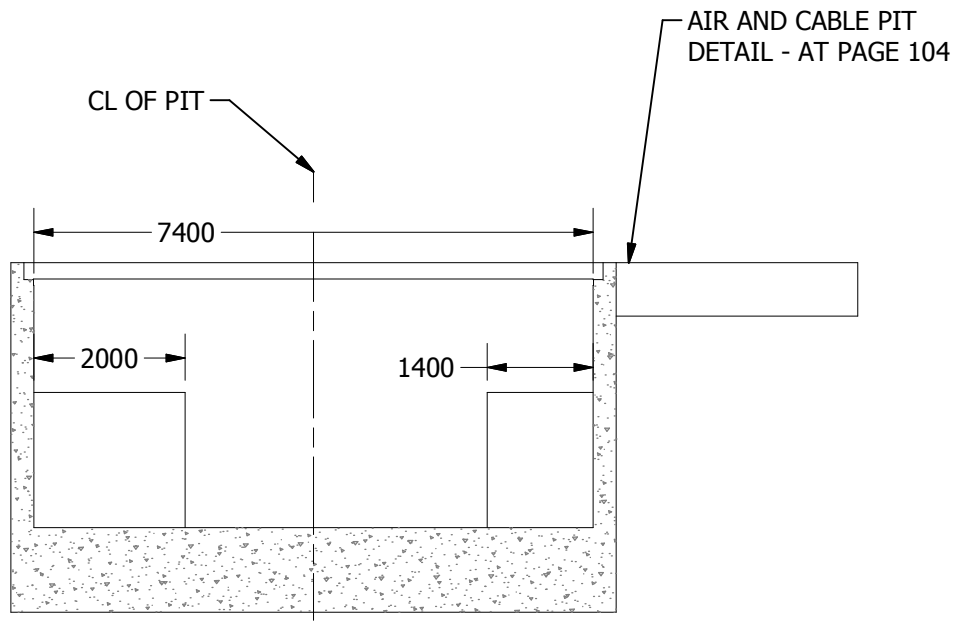
CUSTOMER JP BOWMAN TOOL	DRAWN BY RS	CHECKED BY
PROJECT 1500 TON PRESS	DATE 01/11/2017	DATE
DRAWING GENERAL ARRANGEMENT	SCALE AS NOTED	PROJECT NO. 67151
	MATERIAL	DRAWING NO. 102

REVISION	DATE	DESCRIPTION
1	01/11/2017	PIT DIMENSION CHANGE

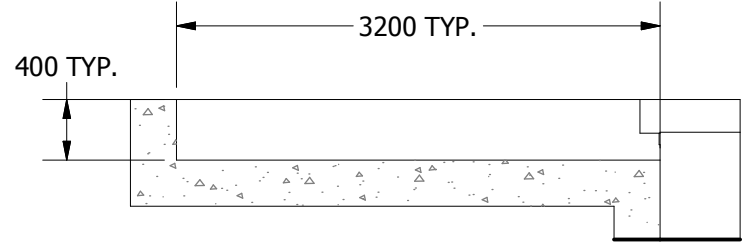
xq: THIS DRAWING AND THE INFORMATION IT HOLDS IS THE PROPERTY OF WESTERN MECHANICAL ELECTRICAL MILLWRIGHT SERVICES LTD. AND IS NOT TO BE LOANED COPIED OR DISCLOSED WITHOUT WRITTEN PERMISSION.



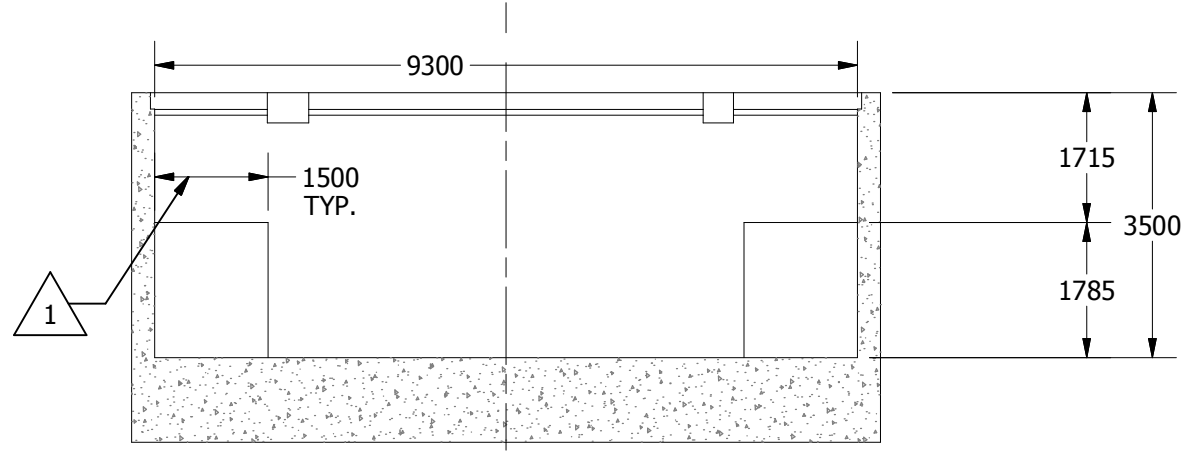
PLAN VIEW
SCALE 1:100



SECTION AY-AY
SCALE 1 / 100



DETAIL BB
SCALE 1 / 50



SECTION BA-BA
SCALE 1 / 100

PRELIMINARY
NOT FOR CONSTRUCTION

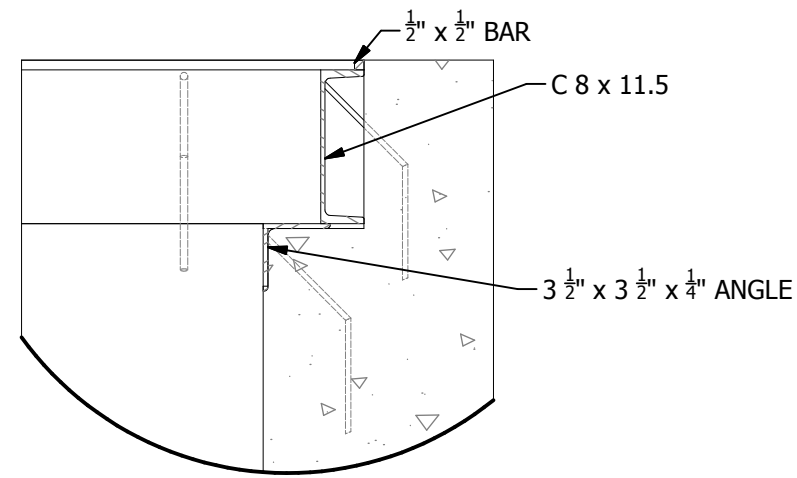
REVISION HISTORY				
ZONE	REV	DESCRIPTION	DATE	APPROVED
	1	CHANGES TO PIT DIMENSIONS UPON REQUEST OF CLIENT	1/11/2017	

Western Mechanical Electrical Millwright Services Ltd.
160 Brock St., Barrie, Ontario L4N 2M4 Tel (750) 737-4135 Fax (705) 737-1765

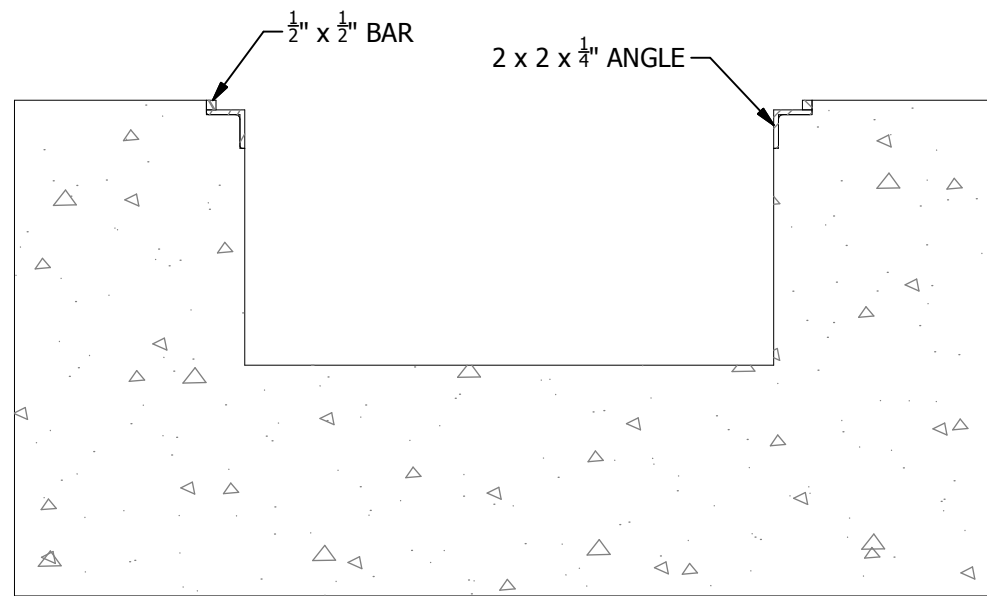
CUSTOMER JP BOWMAN TOOL	DRAWN BY RS	CHECKED BY
PROJECT 1500 TON PRESS	DATE 01/11/2017	DATE
DRAWING PRESS FOUNDATION	SCALE AS NOTED	PROJECT NO. 67151
	MATERIAL	DRAWING NO. 103

REVISION	DATE	DESCRIPTION
1	01/11/2017	PIT DIMENSION CHANGE

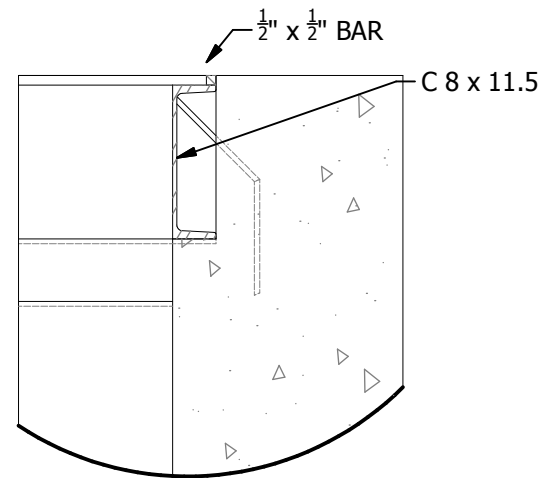
xq: THIS DRAWING AND THE INFORMATION IT HOLDS IS THE PROPERTY OF WESTERN MECHANICAL ELECTRICAL MILLWRIGHT SERVICES LTD. AND IS NOT TO BE LOANED COPIED OR DISCLOSED WITHOUT WRITTEN PERMISSION.



DETAIL AV
SCALE 1/10



SECTION AT-AT
SCALE 1/10



DETAIL AW
SCALE 1/10

Western Mechanical
Electrical
Millwright Services Ltd.
160 Brock St., Barrie, Ontario L4N 2M4 Tel (750) 737-4135 Fax (705) 737-1765

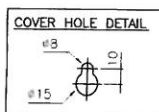
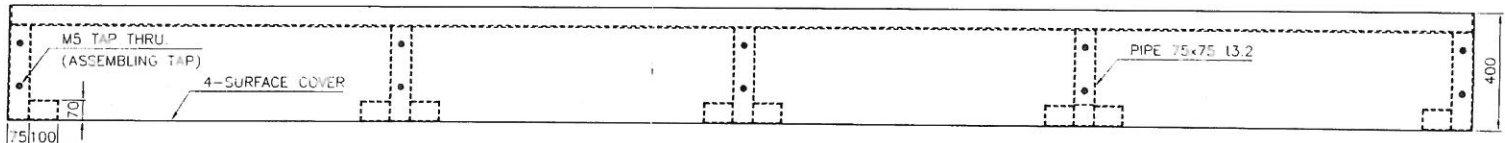
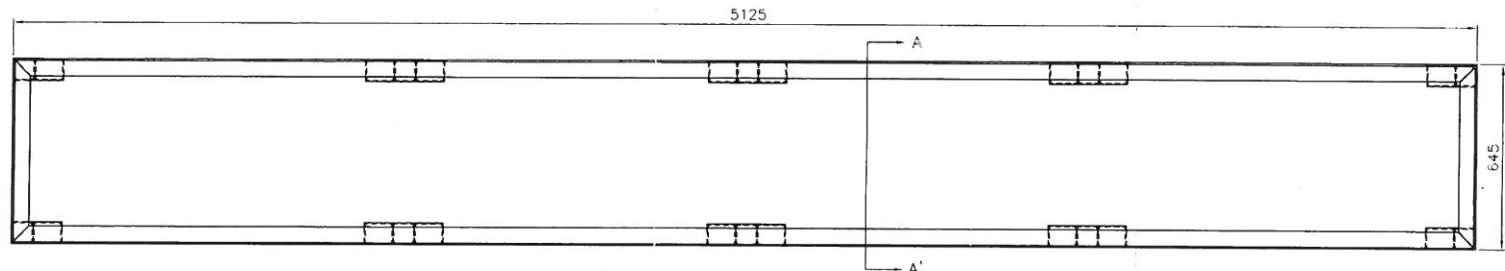
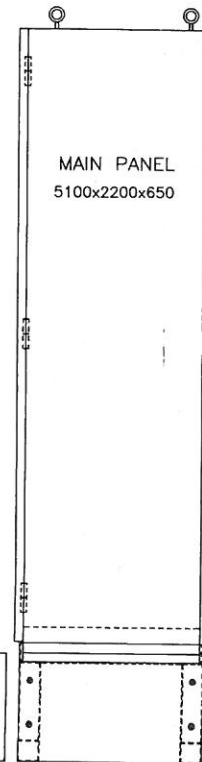
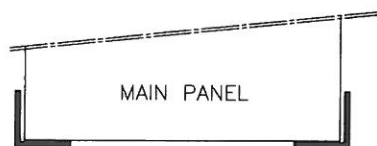
CUSTOMER	DRAWN BY	CHECKED BY
JP BOWMAN TOOL	RS	
PROJECT	DATE	DATE
1500 TON PRESS	01/11/2017	
DRAWING	SCALE	PROJECT NO.
DETAILS	AS NOTED	67151
	MATERIAL	DRAWING NO.
		104

100
90
80
70
60
50
40
30
20
10
0

ON '0MG

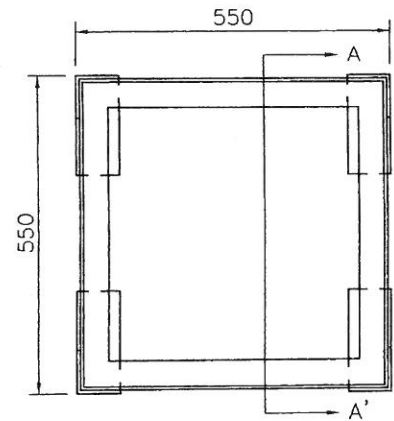
REV.NO.	DATE	REASON FOR REVISION	WRITE	CHECK
△	20 . . .			

A-A' SECTION

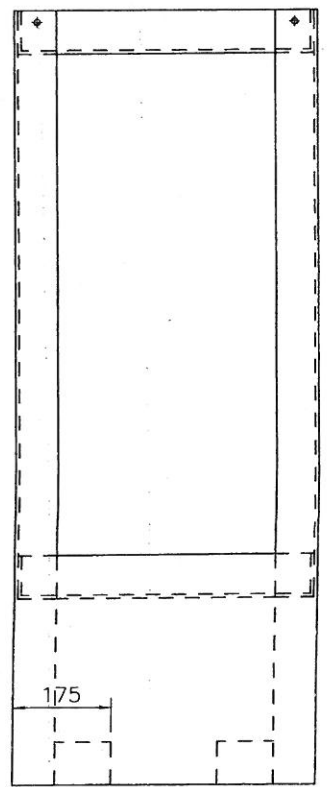
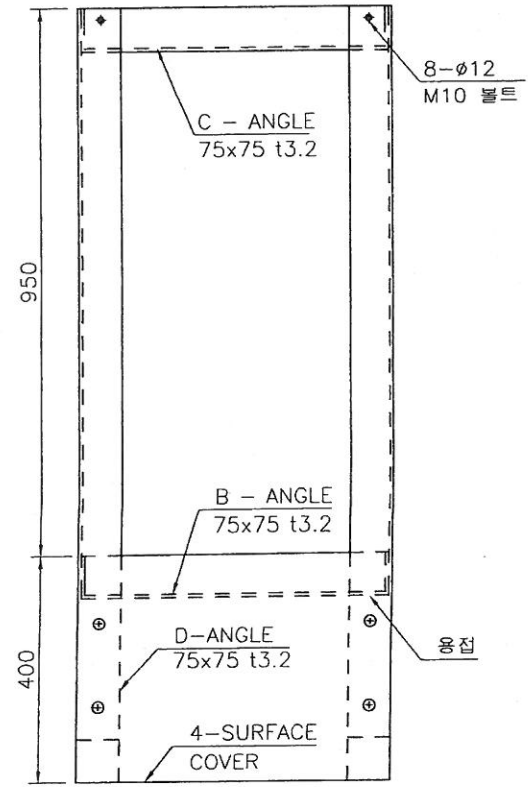
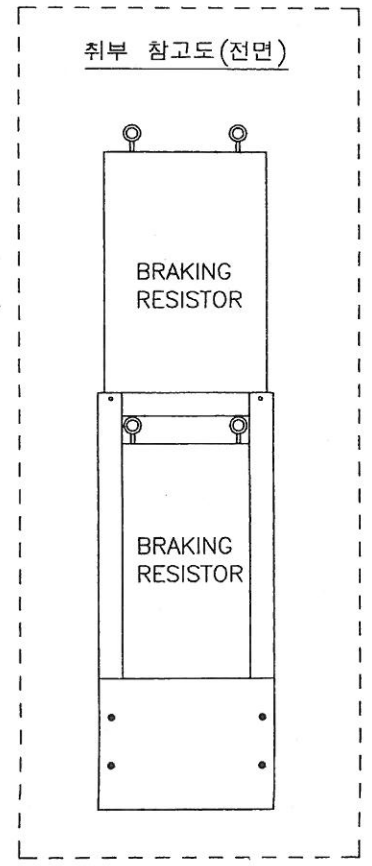
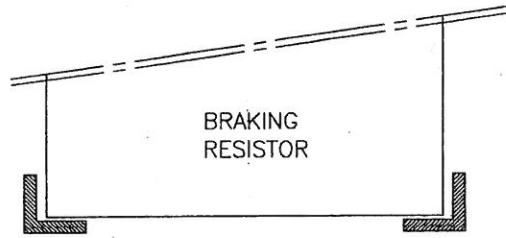


MODEL PRESS	PRODUCTION NO.	PART NAME MAIN PANEL BASE	RELATED DWG NO. P74-808625	DESIGN KK LEE	CHECK	CHECK	APPR'VE
DATE	FILE NAME DSG-BMPB2	ASS'Y NAME ELECTRIC DIAGRAM	DWG NO. P74-810083				

REV.NO.	DATE	REASON FOR REVISION	WRITE	CHECK
△	20 . . .			



SECTION A-A'

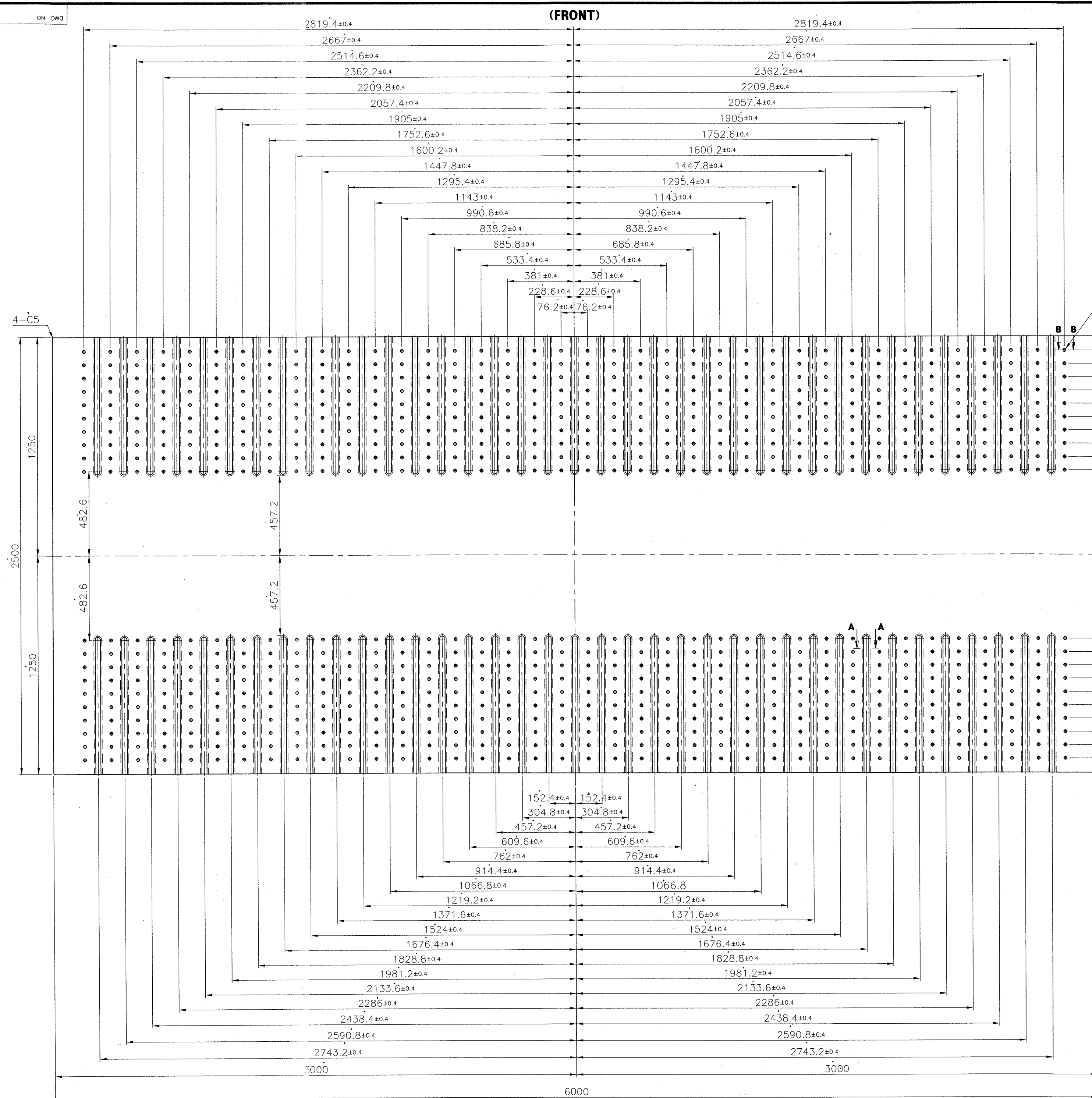


NOTE

1. 설치 위치: 메인 판넬 우측
2. 설치 방법: B에 제동 저항 취부 후
C를 D에 볼트로 결합하여 제동 저항 취부

MODEL PRESS	PRODUCTION NO.	PART NAME BRAKING RESISTOR BASE	RELATED DWG NO.	DRAW	DESIGN	CHECK	APPR'VE
DATE	FILE NAME TS-BRB	ASS'Y NAME ELECTRIC DIAGRAM	DWG NO. P74-801740A	HM YOON			

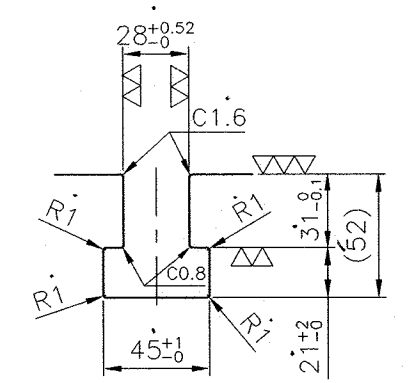
0 10 20 30 40 50 60 70 80 90 100



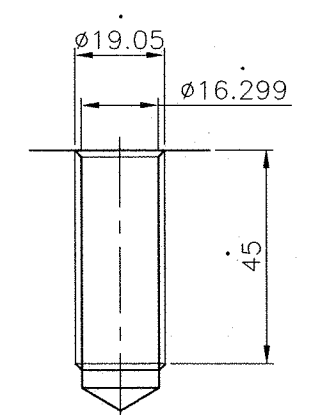
REVISION	DATE	REASON FOR REVISION	WRITE	CHECK
△ X 1	2016.10.03.	Pitch and Dimension of T-slot is changed because specification is confirmed.		
△ X	2016.10.25	Customer Requirements		

▽(▽▽, ▽▽)

760-3/4-10 UNC, depth 45mm



SECTION "A-A"
(Detail "T-SLOT", 37 line)



SECTION "B-B"
(Unified National Coarse, 760 ea)

MACHINING TOLERANCE (mm)			
0.5 TO 6	INCL. ±0.1	OVER 120 TO 315	INCL. ±0.5
OVER 6 TO 30	" ±0.2	" 315 TO 1000	" ±0.8
" 30 TO 120	" ±0.3	" 1000 TO 2000	" ±1.2

1	SLIDE BOTTOM	REF. DWG	SS400	1	
NO.	PART NAME	SIZE	MATERIAL	Q'TY	REMARKS
MODEL	DE4P-1500		PRODUCTION NO. J.P.BOWMAN LIMITED		
SIZE	A2	DATE 2016.10.25	PART NAME SLIDE BOTTOM FACE		
SCALE	1/16	WEIGHT	ASSY NAME SLIDE PART		
RELATED DWG. NO.	P32-413379		DRAW	DESIGN	CHECK APPR'VE
			남민석	김보진	
			PROJECTION DWG. NO. P32-414101 B		



DWG. NO.

REVISION	DATE	REASON FOR REVISION	WRITE	CHECK
△ × 1	2016.06.18.	Customer request. (Delete a die cushion device.)		
△ ×	20			
△ ×	20			


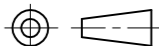
SPECIFICATION

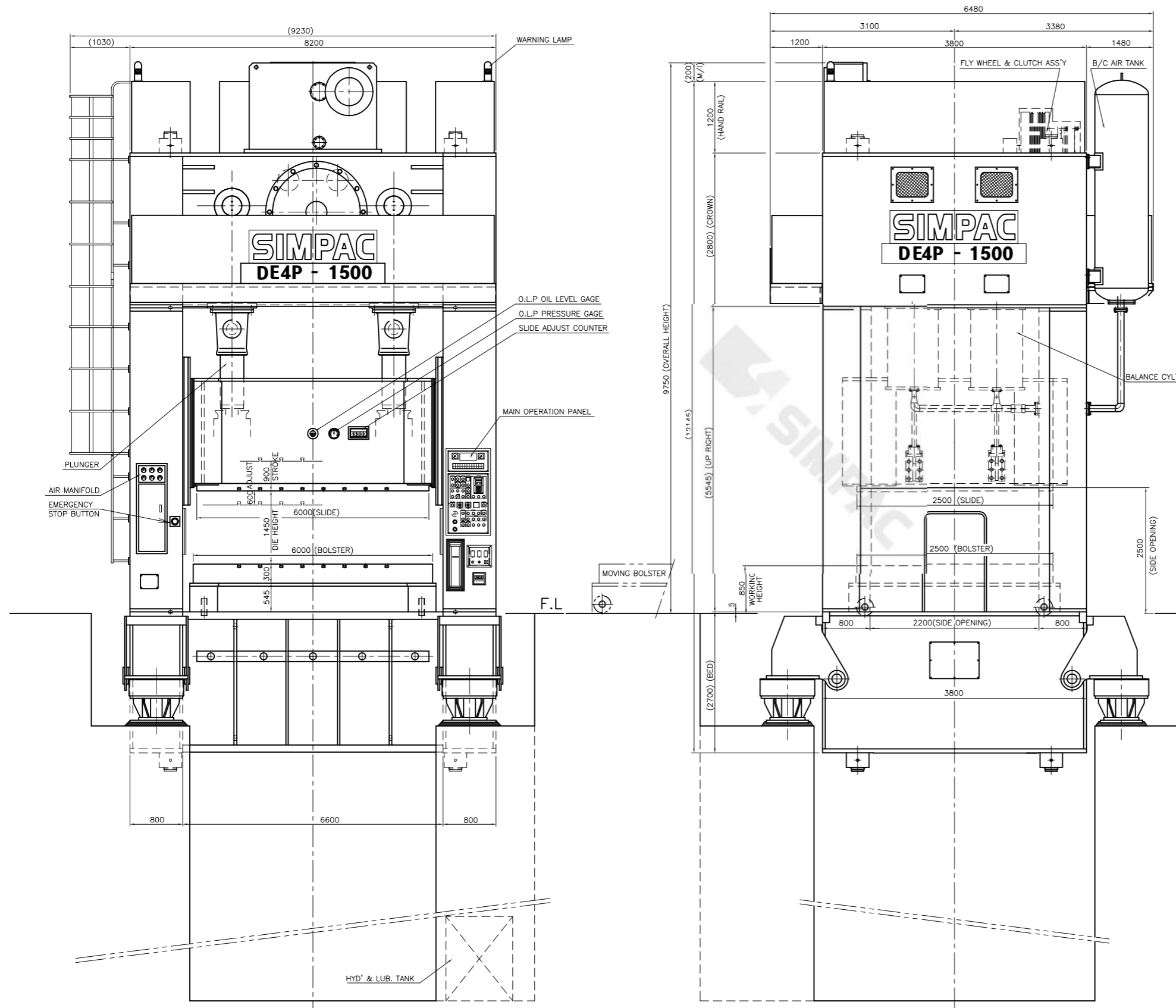
MODEL	DE4P-1500	
CAPACITY X B.D.C	1500 x 13	Ton X mm
CONTINUOUS NO. OF STROKE	10 ~ 20	SPM
INTERMITTENT NO. OF STROKE	8	SPM
STROKE LENGTH	900	mm
DIE HEIGHT	1450	mm
SLIDE ADJUST LENGTH	600	mm
SLIDE AREA	6000x2500	mm X mm
BOLSTER AREA	6000x2500	mm X mm
BOLSTER THICKNESS	300	mm
BALANCE CAPACITY	20	Ton
WORKING HEIGHT	850	MM
MAIN MOTOR	160x4 (AC)	Kw x P
POWER VOLTAGE	440 x 60	V x Hz
CONTROL VOLTAGE	110 x 60 & 24VDC	V x Hz
WORKING AIR PRESSURE	6.5	Kg/Cm ²
WORKING ENERGY INTERMITTENT 8 (@20) S.P.M	57	Ton-M
SLIDE ADJUST MOTOR	15 x 6	Kw x P
DIE CUSHION	TYPE	1PAD 2CYL'D
	CAPACITY	150x2=300 Ton
	STROKE LENGTH	0=350 mm
	PAD AREA	5000x2000 mm X mm
MOVING BOLSTER	ADJUST MOTOR	3.7 X 6 Kw x P
	AIR PRESSURE	6.3 Kg/Cm ²
	TYPE	FRONT TYPE 1SET
MOVING BOLSTER	TREVELLING SPEED	10 M/Min
	WEIGHT OF DIE	40 Ton
MICRO INCHING MOTOR	DRIVING MOTOR	5.5 x 4 Kw X P
		45 x 8 Kw X P

△ × 1
DELETE

NOTICE

Above specification can be modified for improvement of quality without prior notice.

MODEL	DE4P-1500		PRODUCTION NO.	BOWMAN				
SIZE	A3	DATE	2016.06.14	PART NAME				GENERAL VIEW
SCALE	N/S (1/65)	WEIGHT	KG	ASS'Y NAME				
RELATED DWG. NO.	P33-408237		DRAW	DESIGN	CHECK	APPR'VE		
			PROJECTION		DWG. NO.			
					P33-414204 A			
			JG.CHUNG		KJ.SUNG			



Packing Detail

결재	담당	차장	팀장

* Model: DE4P-1500

* NO. of specification: E16DE020-3

* Customer: BOWMAN

* Slide stroke: 900

* Slide & Bolster area: 6000 x 2500

* Die cushion: Applied

* Front open: 6600

* Side open: 2200

* M/B: Front, 1set

* Micro inching device: Applied

* This list can be modified after a confirm of specification or a detailed design.

2016.07.11

NO.	DESCRIPTION	DIMENSION AFTER PACKING			CBM	Approx. Wt		REMARK
		L (ft)	W (ft)	H (ft)		LBS		
1	CROWN	28.87	12.80	11.12	116.34	297,624	SKID VACUUM	
2	BED	26.90	12.80	11.12	108.41	313,056	SKID VACUUM	
3	SLIDE	22.97	9.51	10.33	63.95	165,347	SKID VACUUM	
4	UPRIGHT	18.70	9.19	5.25	25.54	33,069	BOX VACUUM	
5	UPRIGHT	18.70	9.19	5.25	25.54	33,069	BOX VACUUM	
6	MOVING BOLSTER	21.00	10.83	4.10	26.40	110,231	BOX VACUUM	
7	B/C CYLINDER	8.73	6.59	6.99	11.39	11,023	BOX VACUUM	
8	B/C TANK	17.72	8.53	5.41	23.17	6,614	BOX P.E	
9	PLUNGER	6.40	7.87	3.28	4.68	13,228	BOX VACUUM	
10	PLUNGER GUIDE	6.89	6.89	4.76	6.39	8,818	BOX VACUUM	
11	MICRO INCHING	13.12	10.01	6.73	25.01	16,755	BOX VACUUM	
12	OIL TANK, MOTOR	8.53	7.38	7.87	14.04	11,023	BOX VACUUM	
13	PANEL, SUB PANEL	12.80	4.10	9.19	13.65	6,614	BOX VACUUM	
14	CABLE+PLATFORM+ F/W COVER+GUIDE	27.89	8.69	9.48	65.10	17,637	BOX PE	
15	CLUTCH	10.50	6.89	6.89	14.11	33,069	BOX VACUUM	
16	BRAKE	5.25	5.25	5.25	4.10	13,228	BOX VACUUM	
17	DRIVE SHAFT	15.42	2.95	3.02	3.89	8,818	BOX VACUUM	
18	MAIN GEAR(1)	11.48	11.48	7.22	26.95	24,251	BOX VACUUM	
19	MAIN GEAR(2)	11.48	11.48	7.22	26.95	24,251	BOX VACUUM	
20	CON'. ROD	8.20	4.92	3.02	3.45	6,614	BOX VACUUM	
21	MIDEL GEAR	9.84	5.91	4.92	8.10	13,228	BOX VACUUM	
22	BED REG+NUT	9.19	8.53	4.82	10.70	26,455	BOX VACUUM	
23	HAND RAIL (F)	23.79	7.71	6.56	34.08	11,023	BOX PE	
24	CR PLATE	10.99	4.92	2.62	4.02	14,771	BOX VACUUM	
25	PIPING	10.83	8.20	6.56	16.50	6,614	BOX VACUUM	
26	RAIL BASE, GUIDES	17.39	10.17	4.49	22.51	19,180	BOX PE	
27	ANTI VIBRATION	4.53	4.53	6.40	3.71	6,614	BOX PE	
28	TIEROD	35.76	2.79	3.12	8.80	50,706	SKID PE	
29	SAFETY COVER, DOOR	11.81	11.81	2.13	8.42	4,409	SKID PE	
30	RAIL & CABLE GUIDE	21.98	5.58	5.41	18.79	15,432	BOX PE	
31	AIR COMPRESSOR	6.56	4.10	5.09	3.88	11,023	BOX VACUUM	
32	ELECTRIC PANNEL	16.40	4.92	9.84	22.50	3,307	BOX VACUUM	
33	ETC.	8.20	8.20	6.56	12.50	7,716	BOX VACUUM	
34	SPARE	8.20	8.20	4.92	9.38	6,614		
TOTAL					792.94	1351434		