

# ONLINE AUCTION

## LATE MODEL FABRICATION, WELDING AND MACHINING EVENT

**CORPORATE  
ASSETS INC**



**Wednesday, April 15**  
**10:30 AM EDT**

**MARK YOUR  
CALENDARS!**

380 Dewitt Rd,  
Stoney Creek, ON, L8E 2T2

**INSPECTION:** Tuesday, April 14 from 9 AM to 4 PM.

**LIVE WEBCAST ONLY** BidSpotter

**LATE MODEL ASSETS OF A MAJOR FABRICATING, WELDING & MACHINING FACILITY**



AUCTION CONDUCTED BY:

**CORPORATE ASSETS INC**

“Let Our Experience Be Your #1 Asset”™

373 Munster Avenue, Toronto, ON, Canada M8Z 3C8

www.corpassets.com • 416.962.9600 • info@corpassets.com

# CNC LASER CUTTING MACHINE & 5-AXIS CNC VERTICAL MACHINING CENTER

2018



26,671 HRS

**MAZAK SUPER TURBO-X 2412 FIBRE CNC laser cutting machine**

2017



5-AXIS

**MATSUURA VX-1000 MAXIA 5-axis CNC high speed vertical machining center**



CAT 50 SPINDLE

**MAZAK AJV 25/405 CNC bridge-type vertical machining center**

## CNC LASER CUTTING MACHINE

**MAZAK (2018) SUPER TURBO-X 2412 FIBRE CNC laser cutting machine** with MAZAK MAZATROL PREVIEW 3 CNC control, 49.21" x 98.43" table, Travels: X - 99.21"; Y - 50"; Z - 6.69", 3kW YLS-3000 laser, multi-control torch, auto-nozzle changer, auto-nozzle cleaning, plasma detection, burn detection, ROBO-VENT PLASER weld fume extractor, chiller unit, OEM spare parts & laser consumables, 26,671 hours (recorded at time of listing), s/n: 295271

## CNC BRIDGE-TYPE VMC

**MAZAK AJV 25/405 CNC bridge-type vertical machining center** with MAZAK MAZATROL M-32 CNC control, 22"x49" table, Travels: X - 39.37"; Y - 20"; Z - 18.11", CAT50 spindle taper, 30 station ATC, speeds to 3,000 RPM, 25 HP, coolant, chip conveyor, s/n: 85196

**CONTACT 416.962.9600 TO CONSIGN EQUIPMENT AT AN UPCOMING AUCTION**

# WELL MAINTAINED CNC FABRICATING AND MACHINING EQUIPMENT

2009



**CNC BACKGAUGE**

**ODIN WE67K 200 ton capacity CNC hydraulic press brake**

2010



**50 TON**

**MACRODYNE MPS-50 4 post hydraulic spotting press**



**LIVE MILLING**

**MAZAK INTEGREX 40 ATC M/C CNC horizontal turning and live milling center**

2021

**2 AVAILABLE**



**YASKAWA GP110 YR-1-06VX110-A00 6-axis robot**

2000



**KOIKE ARONSON S14VR14CL-PK welding manipulator**

**TO SCHEDULE AN AUCTION CONTACT 416.962.9600**

# HUGE SELECTION OF PLASMA CUTTERS, WELDERS & POWER SOURCES



**HYPERTHERM MAX 100**  
portable plasma cutter



**HYPERTHERM MAXPRO 200** plasma  
cutter power source



**LINCOLN ELECTRIC IDEALARC DC-600**  
sub-arc welder



**LINCOLN ELECTRIC IDEALARC**  
DC-1000 welding power source



**LINCOLN ELECTRIC INVERTEC STTII** surface  
tension transfer process digital MIG welder



**LINCOLN ELECTRIC POWER**  
WAVE 455/STT MIG welder



**RED-D-ARC E300**  
power source



**LINCOLN ELECTRIC**  
power source



**AGM LS-400** stud welder



Partial view of welders available

**35+ AVAILABLE**

## PLASMA CUTTERS & WELDERS

**HYPERTHERM MAX 100** portable plasma cutter with cables and torch, s/n: 059010 70-2874

**HYPERTHERM MAXPRO 200** plasma cutter power source with 30 KVA transformer, s/n: MP200-002118

**HYPERTHERM MAXPRO 200** plasma cutter power source, s/n: MP200-001296

**LINCOLN ELECTRIC IDEALARC DC-600** sub-arc welder with LINCOLN ELECTRIC NA-5 weld controller and flux hopper, s/n: C1970100260

(9) **LINCOLN ELECTRIC INVERTEC STTII** surface tension transfer process digital MIG welders with LINCOLN ELECTRIC STT-10 wire feeder, cables, gun, 15 KVA transformer & cart, s/n:

U1991206570, U1991103440,  
U1991206570, U1961103452,  
U1961116290, U1981103439,  
U1990320264, U1981116295,  
U199032321

**CONTACT 416.962.9600 TO CONSIGN EQUIPMENT AT AN UPCOMING AUCTION**



**10' X 14 GA**

**ROPER WHITNEY PEXTO 10M14J 10' power shear**



**2 AVAILABLE**

**SINTO SSTBLAST-0018-00 single wheel tumble blaster**



**10,000 LB. CAPACITY**

**MECON INDUSTRIES MODEL 10036 48" power uncoiler**



**48"X29 GA MAX. CAPACITY**

**METAL ROLL FORMING SYSTEMS automatic coil fed cut-to-length system**



**2022**

**40 HP**

**EUROVAC CPA-401-83AP0262 cartridge-type industrial central dust collector**



**2005**

**ONLY 340 HRS!**

**SDMO J40UCM 40kW diesel generator**

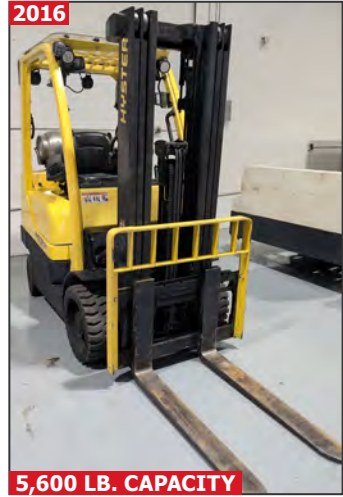
**TO SCHEDULE AN AUCTION CONTACT 416.962.9600**

# NICE OFFERING OF ROLLING STOCK & MATERIAL HANDLING SUPPLIES



**6,000 LB. CAPACITY**

**MANITOU** MSI 30 rough terrain diesel forklift



**5,600 LB. CAPACITY**

**HYSTER** S60FT LPG forklift



**7,000 LB. CAPACITY**

**TOYOTA** 7FGCU35-BCS LPG forklift



**26' BOOM**

**8,600 LB. CAPACITY**

**BRODERSON** IC-35-2B industrial carry deck mobile crane

## ROLLING STOCK

**MANITOU** MSI 30 6,600 lb. capacity rough terrain diesel forklift with 185" max. vertical reach, 3-stage mast, side shift, outdoor flat free foam filled tires, turbo-diesel engine, automatic transmission, 2WD, full cab enclosure with heat and air conditioning, approx. 3,300 hours (recorded at the time of listing), s/n: n/a

**HYSTER** (2016) S60FT 5,600 lb. capacity LPG forklift with 181.9" max. vertical reach, 3-stage high visibility mast, side shift, outdoor cushion tires, 9,345 hrs (recorded on meter at time of listing), HYSTER TRACKER DRO, s/n: H187V06172P

**TOYOTA** (2001) 7FGCU35-BCS 7,000 lb. capacity LPG forklift with 187" max. vertical reach, 3-stage high visibility mast, side shift, cushion indoor tires, s/n: 60384

**BRODERSON** IC-35-2B 8,000 lb. capacity industrial carry deck mobile crane with 26' max. boom extension, 70 deg. max. boom elevation, max. travel speed 10 mph, hydraulic outriggers, diesel engine, s/n: 17059

## WELDING PERIPHERALS

(2) **YASKAWA** (DEC 2021) GP110 YR-1-06VX110-A00 6-axis robots with 220 lbs. payload capacity, YRC1000 controls with touch screen wired teach pendant, steel base stand, s/n: R21020-432-1

**KOIKE ARONSON** (2000) S14VRA14CL-PK welding manipulator with LINCOLN ELECTRIC DC-1000 welding power source, LINCOLN ELECTRIC NA-5 wire feed, MILLER COOLMATE 4 chiller, sub-arc head with flux hopper, Travels: Y - 168", Z - 168", lift range 38.75" to 206.75", reach range 18" to 138" s/n: 00321 (professionally disassembled)

**CONTACT 416.962.9600 TO CONSIGN EQUIPMENT AT AN UPCOMING AUCTION**



NTN N25 vibratory bowl feeders



Partial view of CAT 50 tool holders available



TAUMEL T626M modular orbital head forming riveters



Partial view of transformers available

**FEATURING:** MAZAK (2018) SUPER TURBO-X 2412 FIBER CNC laser cutting machine; MATSUURA (2017) VX-1000 MAXIA 5-axis CNC high speed vertical machining center; MAZAK AJV 25/405 CNC bridge-type vertical machining center; MAZAK INTEGREGX 40 ATC M/C CNC horizontal turning and live milling center; MACRODYNE (2010) MPS-50, 50-ton cap. 4 post hydraulic spotting press; (2) YASKAWA (DEC 2021) GP110 YR-1-06VX110-A00 6-axis robots; KOIKE ARONSON (2000) S14VRA14CL-PK welding manipulator with LINCOLN ELECTRIC DC-1000 welding power source and LINCOLN ELECTRIC NA-5 wire feed; AGM LS-400 stud welder with cables and gun; ROPER WHITNEY PEXTO 10M14J 10'x14 ga. power shear; ODIN (2009) WE67K 200 ton cap. CNC hydraulic press brake; MANITOU MSI 30 6,600 lb. cap. rough terrain diesel forklift; HYSTER (2016) S60FT 5,600 lb. cap. LPG forklift; TOYOTA (2001) 7FGCU35-BCS 7,000 lb. cap. LPG forklift; BRODERSON IC-35-2B 8,000 lb. cap. industrial carry deck mobile crane; (2) SINTO SSTBLAST-0018-00 single wheel tumble blasters with cyclonic-type media recovery; EUROVAC (NOV-2022) CPA-401-83AP0262 cartridge-type industrial central dust collector system; SDMO (2005) J40UCM 40KW diesel generator with ONLY 388 hours; MECON INDUSTRIES MODEL 10036 10,000 lb. cap. power uncoiler; METAL ROLL FORMING SYSTEMS automatic coil feed cut-to-length system; CAT50 tool holders; (2) TAUMEL T626M modular orbital head forming riveters; (2) NTN N25 vibratory bowl feeders; DYNOVATION 15-CW-MF vibratory bowl feeder; (10+) transformers - various sizes and capacities and MUCH MORE!

**THIS IS A PARTIAL LISTING ONLY! FOR FURTHER INFORMATION, PLEASE VISIT WWW.CORPASSETS.COM**

## AUCTION DETAILS

**LIVE WEBCAST ONLY**

### INSPECTION

Tuesday, April 14 from 9 AM to 4 PM or by appointment. Please email [info@corpassets.com](mailto:info@corpassets.com) to arrange.

### REMOVAL

All assets must be removed no later than Friday, May 1 BY APPOINTMENT ONLY. Please email [info@corpassets.com](mailto:info@corpassets.com) to arrange.

### TERMS

Corporate Assets Inc. assumes no liability for errors or omissions in this brochure. Corporate Assets Inc. expressly reserves the right to determine the manner of conducting the auction as it may deem appropriate. All subject to prior sale.

### PAYMENT

A Buyer's Premium will apply at this sale. International & online bidders may need a refundable deposit to bid. **SALE WILL BE CONDUCTED IN CAD.**

Please refer to our website at [www.corpassets.com](http://www.corpassets.com) or call 416.962.9600 for further information. Pour les services en français, composez le 1.855.583.5551

We Accept



Please visit our website as specific terms and conditions may apply.

**BID ONLINE AT: BidSpotter**

### AFFILIATIONS



©2026 CORPORATE ASSETS INC. ALL RIGHTS RESERVED.



## WE BUY & SELL YOUR SURPLUS MACHINERY

ONE MACHINE OR ENTIRE PLANTS, WE HAVE OVER 60 YEARS EXPERIENCE TO SELL YOUR EQUIPMENT AT FAIR MARKET VALUE.

**CONTACT US TODAY TO LEARN MORE! 416.962.9600**

**SUBSCRIBE TO OUR NEWSLETTER AND GET THE LATEST AUCTION UPDATES**

**CORPORATE ASSETS INC**

[corpassets.com/newsletter-signup](http://corpassets.com/newsletter-signup)