

ONLINE AUCTION

CORPORATE ASSETS INC

Surplus Assets of
GRIZZLY ASE INC.



MARK YOUR CALENDARS!



Tuesday, November 25
10:30 AM EDT
2170 Winston Park Drive,
Oakville, Ontario, L6H 5W1

INSPECTION: Monday, November 24 from 9 AM to 4 PM EST.

LIVE WEBCAST ONLY BidSpotter

FABRICATING EQUIPMENT EVENT



AUCTION CONDUCTED BY:

CORPORATE ASSETS INC

“Let Our Experience Be Your #1 Asset”™

373 Munster Avenue, Toronto, ON, Canada M8Z 3C8

www.corpassets.com • 416.962.9600 • info@corpassets.com

CNC HYDRAULIC PRESS BRAKE & CNC PLASMA CUTTING MACHINE

2010



3-AXIS

144" OVERALL BENDING LENGTH

BAYKAL APHS 3708X200 COMPACT 200 ton capacity CNC hydraulic press brake

2017



HYPERTHERM HPR130XP PLASMA CUTTER

MICROSTEP RS MASTER CUT COMPACT 12F.6P CNC plasma cutting machine



175 TON

PEARSON hydraulic press brake



0.25" X 120" CAPACITY

PEARSON MODEL 1010 hydraulic shear

CNC HYDRAULIC PRESS BRAKE

BAYKAL (2010) APHS 3708X200 COMPACT 200 ton capacity CNC hydraulic press brake with **BAYKAL EC4** 3-axis CNC control, 144" overall bending length, 108" between housings, 10.25" stroke, 20.75" daylight opening, CNC back gauge with 39" travel, s/n: 16497

CONTACT 416.962.9600 TO CONSIGN EQUIPMENT AT AN UPCOMING AUCTION

LRG OFFERING OF WELDING & FABRICATING EQUIPMENT AVAILABLE

2018



LINCOLN ELECTRIC IDEALARC CV305 MIG welder with LINCOLN ELECTRIC LF-72 wire feeder

2014



LINCOLN ELECTRIC IDEALARC CV305 MIG welder with LINCOLN ELECTRIC LN-7 wire feeder



ESAB LAG 315 MIG welder with ESAB A10-MEC wire feeder



Partial view of portable plasma cutters available



50 TON
UNI-HYDRO MODEL 50-14
mechanical iron worker



FEXAC MODEL UG universal milling machine



RIDGID MODEL 1224 portable pipe
threader

CNC PLASMA CUTTING MACHINE

MICROSTEP (2017) RS MASTER CUT COMPACT 12F.6P CNC plasma cutting machine with MICROSTEP Windows-based CNC control, 78"x165" burning table, Travels: X - 157"; Y - 72"; Z - 9.5", HYPER THERM HPR130XP plasma cutter with cables & torch, CHICAGO PNEUMATIC CPX 10 refrigerated air dryer, s/n: 2282

TO SCHEDULE AN AUCTION CONTACT 416.962.9600



FIRST LC-30A bench-type drilling & milling machine



MIC Z5040 vertical gear head drill



FIRST LC-25A floor-type drill press



K&K ROLL-A-WAY vertical roll-in band saw



2 AVAILABLE

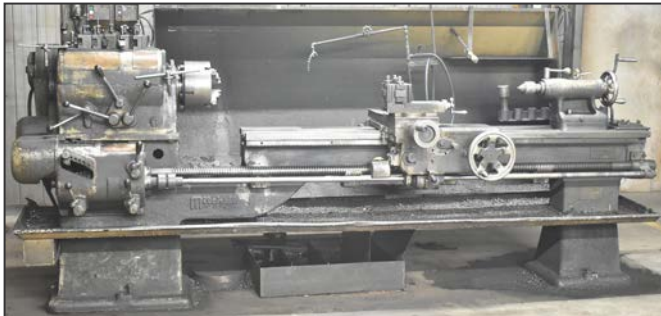
SOCO MC-315F 12" cold cut saw



ENERPAC hydraulic press/bender



POTTER & JOHNSON 15" universal shaper



MITCHELL OF KEIGHLEY gap bed engine lathe



RAMPE V4-1 rotary drum tumbler



KONECRANES 5000 kg. capacity single girder top-running overhead bridge crane



KONECRANES 2000 kg. capacity single girder top-running overhead bridge crane



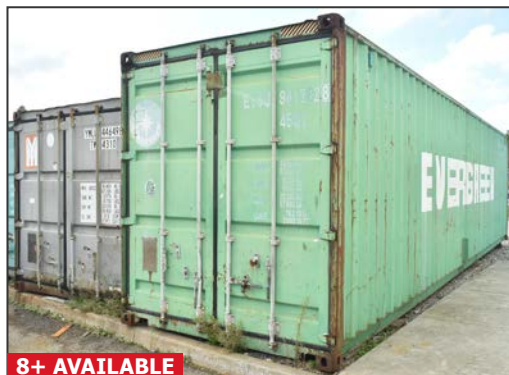
ATLANTIC INTERNATIONAL 17'x20'x12'H downdraft paint booth



TOYOTA 7FGCU25 LPG forklift



CHAMPION 25 HP tank-mounted air compressor



Partial view of 40' storage containers available

TO SCHEDULE AN AUCTION CONTACT 416.962.9600



Partial view of rolling tool boxes available



Partial view of shop fans available



Partial view of pallet jacks available



Partial view of support equipment available



Partial view of furniture available

ALSO: (5+) hydraulic pallet jacks; pedestal & bench grinders; rolling toolboxes; (2) LINCOLN ELECTRIC IDEALARC 250 stick welders; shop fans; saw horses; FIREPROOF cabinets; hand tools; welding consumables; rolling shop ladders; work benches; shop carts; steel shelving & MUCH MORE!

THIS IS A PARTIAL LISTING ONLY! FOR FURTHER INFORMATION, PLEASE VISIT WWW.CORPASSETS.COM

AUCTION DETAILS

LIVE WEBCAST ONLY

INSPECTION

Monday, November 24 from 9 AM to 4 PM or by appointment. Please email info@corpassets.com to arrange.

REMOVAL

All assets must be removed no later than Friday, December 12 BY APPOINTMENT ONLY. Please email info@corpassets.com to arrange.

TERMS

Corporate Assets Inc. assumes no liability for errors or omissions in this brochure. Corporate Assets Inc. expressly reserves the right to determine the manner of conducting the auction as it may deem appropriate. All subject to prior sale.

PAYMENT

A Buyer's Premium will apply at this sale. International & online bidders may need a refundable deposit to bid. **SALE WILL BE CONDUCTED IN CAD.**

Please refer to our website at www.corpassets.com or call 416.962.9600 for further information. Pour les services en français, composez le 1.855.583.5551

We Accept



Please visit our website as specific terms and conditions may apply.

BID ONLINE AT: BidSpotter

AFFILIATIONS



SURPLUS EQUIPMENT?

TURN IDLE ASSETS INTO CASH!

WE BUY & SELL YOUR SURPLUS MACHINERY

ONE MACHINE OR ENTIRE PLANTS, WE HAVE OVER 60 YEARS EXPERIENCE TO SELL YOUR EQUIPMENT AT FAIR MARKET VALUE.

CONTACT US TODAY TO LEARN MORE! 416.962.9600

SUBSCRIBE TO OUR NEWSLETTER AND GET THE LATEST AUCTION UPDATES

CORPORATE ASSETS INC

corpassets.com/newsletter-signup