

CORPORATE ASSETS INC

ONLINE AUCTION

Surplus Assets of
AUTOGENE INDUSTRIES NORTH BAY INC.



**Wednesday, August 20
10:30 AM EDT**

**MARK YOUR
CALENDARS!**

1811 Seymour Street,
North Bay, Ontario, P1A 0C7

INSPECTION: Tuesday, August 19 from 9 AM to 4 PM.

LIVE WEBCAST ONLY BidSpotter

WORLD CLASS STRUCTURAL BRIDGE FABRICATING FACILITY



AUCTION CONDUCTED BY:

CORPORATE ASSETS INC

“Let Our Experience Be Your #1 Asset”™

373 Munster Avenue, Toronto, ON, Canada M8Z 3C8

www.corpassets.com • 416.962.9600 • info@corpassets.com

MARK YOUR CALENDARS FOR THIS UPCOMING FABRICATING EVENT

2020



76' X 12' BURN TABLE

DELTA BEVELLING / ROTATING HEAD

MESSER MPC2000 high definition CNC plasma cutting / drilling / oxy-acetylene plate processing table

2009



25' X 9' BURN TABLE

PINNACLE SHAPE WIZARD D5G CNC plasma cutting table

2016



AGTOS / OCEAN RT05-10-01-306-04-07. 5-wheel tunnel type structural steel media blasting line

PLASMA CUTTING EQUIPMENT

MESSER (2020) MPC2000 high definition CNC plasma cutting / drilling / oxy-acetylene plate processing table with MESSER PC based CNC control, 76' X 12' burn table, travels X - 75', (1) delta beveling / rotating plasma head with +/- 460 degrees programmable rotation, +/- 52 degrees programmable torch tilt angle, 1 1/2" thickness cutting capacity, up to 2" cutting capacity when using argon, (1) 2" capacity CAT40 drilling head with 40HP, speeds to 4000RPM, (5) ALFA OXYFUEL auxiliary oxy/acetylene torch carriages, HYPERTHERM XPR300 63KW output plasma source, HYPERTHERM XPR300 vented water injection gas console, PHOTOEYE E-STOP, additional extra section of table available up to 100' S/N: MPC2018-20-6791

PINNACLE (2009) SHAPE WIZARD D5G CNC plasma cutting table with HYPERTHERM EDGE CNC control 25' X 9' burn table, HYPERTHERM plasma cutting head with 2 1/4" thickness cutting capacity, (4) oxy/acetylene torch carriages, HYPERTHERM HPR260 plasma power source S/N: DSG01-09-18

CONTACT 416.962.9600 TO CONSIGN EQUIPMENT AT AN UPCOMING AUCTION

ALL ASSETS HAVE BEEN WELL MAINTAINED BY THE CORPORATION



PYTHONX / ABB CNC plasma cutting robot cell



2 AVAILABLE

PEDDINGHAUS OCEAN AVENGER MDC100 single spindle CNC beam drill line



61' PER MINUTE

PEDDINGHAUS OCEAN CLIPPER CNC angle plate processing line



240 TON CAPACITY

GINGRAS SBP-12-240 hydraulic press brake / shear



8 AVAILABLE

View of **HEARN** portable table type gantry drills



HEARN D17A XY portable table type gantry drill



HEARN STD7BA XY portable table type gantry drill

TO SCHEDULE AN AUCTION CONTACT 416.962.9600



HYDMECH M-20A hydraulic horizontal band saw



HYDMECH S-20P SERIES III horizontal band saw



HYDMECH S20 horizontal band saw



PNEUCO MACHINERY V6-50 6' hydraulic press brake



GEKA HYDRACROP 110-S ironworker



120" X 1/2" CAPACITY

HYDRAULIC DROP END

DURAMAZLER HSM 3012 plate rolls

FABRICATION EQUIPMENT

GINGRAS SBP-12-240 hydraulic press brake / shear with 240-ton capacity, 12' X 5/8" shear capacity, 12' X 3/8" break capacity, 148" in between bolsters S/N: 2000676

PNEUCO MACHINERY V6-50 6' hydraulic press brake, 50 ton, 10GA capacity S/N: C120016

DURAMAZLER HSM 3012 plate rolls with hydraulic drop end, 10' x 9 1/2" rolls, 120" X 1/2" capacity S/N: 304599031

GEKA HYDRACROP 110-S ironworker with 6 1/2" X 6 1/2" X 1/2" angle shear capacity, 24" X 5/8" plate capacity, 2" round/square bar capacity, 1 1/2" X 3/4" punch capacity, 13.4HP S/N: 1895

HYDMECH M-20A hydraulic horizontal band saw with HYDMECH E200 PLC control, 10HP, main vise, shuttle vise S/N: T0906547

HYDMECH S-20P SERIES III horizontal band saw with PLC control, 5HP, main vise S/N: 7B0316328

HYDMECH S20 horizontal band saw with 5HP, main vise S/N:20793421

KING KC-918VS-V-5 horizontal band saw with 2HP, 9" x 18" capacity S/N: 06068020

MFG N/A horizontal band saw S/N: N/A

MFG N/A vertical band saw with 30" X 28" table, 20" throat, blade welder S/N: N/A

RIDGID 300-T2 pipe threader S/N: ED83450703

HUGE OFFERING OF WELDING EQUIPMENT & ACCESSORIES AVAILABLE



50+ WELDERS AVAILABLE

View of **LINCOLN ELECTRIC** and **MILLER** welders available



LINCOLN ELECTRIC CLASSIC
300 gas welder generator



LINCOLN ELECTRIC VANTAGE 300
diesel powered welder generator



NELSON NELWELD
4000 stud welder



MILLER DELTAFAB mig welder



MILLER DELTAFAB mig welder



MILLER DELTAFAB mig
welder



MILLER DELTAFAB mig
welder



2 AVAILABLE

LINCOLN ELECTRIC
DC1000 mig welder



View of welding
equipment



Partial view of
welding equipment



Welding machines and accessories



Welding machines and
accessories

TO SCHEDULE AN AUCTION CONTACT 416.962.9600

NICE OFFERING OF MATERIAL HANDLING & ROLLING STOCK AVAILABLE



147HP TURBO DIESEL

DOOSAN DL220 front end wheel loader



80,000 LBS CAPACITY

GROVE mobile crane



PENDANT CONTROL 50 TON CAPACITY

KROPF INDUSTRIAL CONOLIFT mobile gantry lift



25 TON CAPACITY

KROPF INDUSTRIAL mobile gantry lift



CATERPILLAR 6NZ ENGINE

PETERBILT 379 T/A transport truck



CATERPILLAR C15 ENGINE

PETERBILT 379 T/A transport truck



FORD F250 flat deck truck



DODGE RAM 1500 pickup truck

CONTACT 416.962.9600 TO CONSIGN EQUIPMENT AT AN UPCOMING AUCTION

NICE OFFERING OF MATERIAL HANDLING & ROLLING STOCK AVAILABLE

2000



50,000 LBS CAPACITY CRANE

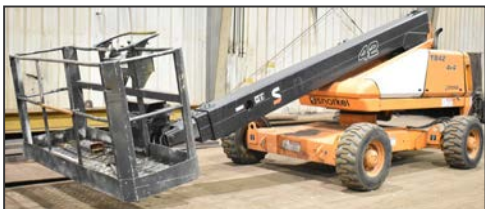
STERLING T/A crane truck



STARK FG25 LPG forklift



SNORKEL TB-42R0V articulating personnel lift



SNORKEL TB-42R0V articulating personnel lift



ATLAS COPCO XAS375 tow behind air compressor



CATERPILLAR D150-8 205KW generator set



MAGNUM NIGHTBUSTER tow behind light tower



SKYJACK SJ3626 electric scissor lift



SKYJACK SJIII 3226 electric scissor lift

MATERIAL HANDLING

STARK FG25 LPG forklift with 4800LBS capacity, 185" 3 stage high visibility mast, side shift, cushion tires 5353HRS (recorded on meter at time of listing) S/N: TAO8469

(2) **SNORKEL TB-42R0V** articulating personnel lifts with 42' max height, 500lbs capacity, 45HP diesel engine, 5003 / 5913 HRS (recorded on meter at time of listing) S/N: MY02074 / MY02048

SKYJACK SJ3626 electric scissor lift with 32' max reach, 500LBS max capacity, 9990HRS (recorded on meter at time of listing) S/N: N/A

SKYJACK SJIII 3226 electric scissor lift with 26' max reach, 500LBS max capacity, hours N/A S/N: 272027

ATLAS COPCO (2011) XAS375 tow behind air compressor with JOHN DEERE diesel engine, 1784HRS (recorded on meter at time of listing)

TO SCHEDULE AN AUCTION CONTACT 416.962.9600

LARGE OFFERING OF HEAVY HAULING TRAILERS AVAILABLE

2015



120,200 LBS GVWR

CHALLENGER 48' TRI/A RGN trailer

2008



TITAN 48' 5 axle flat deck trombone trailer



STOUGHTON AVN-48STRI-AR 48' 4 axle flat deck trombone trailer



25,000 LBS AXLES

MFG UNKNOWN 5 axle steerable booster trailers



25,000 LBS AXLES

MFG UNKNOWN 5 axle steerable booster trailers



5 axle steerable booster trailers



79,366 LBS GVWR

PEERLESS JP-35-9W-2A T/A jeeps



79,366 LBS GVWR

PEERLESS JP-35-9W-2A T/A jeeps

CONTACT 416.962.9600 TO CONSIGN EQUIPMENT AT AN UPCOMING AUCTION

OVERHEAD BRIDGE CRANES UP TO 40 TON CAPACITY AVAILABLE



40 TON CAPACITY

MFG UNKNOWN Double girder overhead bridge crane



20 TON CAPACITY

STREET double girder overhead bridge crane



15 TON CAPACITY

DEMAG double girder overhead bridge crane



15 TON CAPACITY

DEMAG double girder overhead bridge crane



15 TON CAPACITY

DEMAG double girder overhead bridge crane

OVERHEAD BRIDGE CRANES

ZENIMAR double girder 40-ton capacity overhead bridge crane with wireless pendant control, 59' span, 21' height underhook S/N: 8404

MFG UNKNOWN double girder 40-ton capacity overhead bridge crane with wireless pendant control, 45' span, 18' height under hook S/N: 14-120

STREET double girder 20-ton capacity overhead bridge crane with pendant control, 59' span, 22' height under hook S/N: 529

DEMAG double girder 15-ton capacity overhead bridge crane with pendant control, 45' span, 18' height under hook S/N: 527

STREET double girder 5-ton overhead bridge crane with pendant control, (2) STREET 5-ton hoists, 74' span, 24' high under hook S/N: N/A

(2) **STREET** 5-ton capacity overhead bridge crane with pendant control, 38' span, 19' height under hook S/N: 525 / 526

COMPRESSORS

INGERSOLL RAND (2014) R901-A10 125HP air compressor with 9159HRS (recorded on meter at time of listing) S/N: V2254U14253

GARDNER DENVER 100HP compressor with PLC control, N/A HRS S/N: N/A

TO SCHEDULE AN AUCTION CONTACT 416.962.9600



HECKER 6' radial arm drill



KBL 20VS vertical mill



MODERNE ZW5050 gearhead drill



JET GH-1880ZXG gap bed engine lathe



Partial view of lifting equipment available



Partial view of lifting equipment available



Partial view of lifting equipment available



View of 40' shipping containers available

4 AVAILABLE

MACHINE TOOLS

MILLTRONIC RH30 CNC vertical machining center with **MILLTRONIC CENTURION** CNC control, 72" X 24" t-slot table, travels X - 60", Y- 30", Z - 28", 25HP spindle, speeds to 8000RPM, 16ATC S/N: N/A

JET GH-1880ZXG gap bed engine lathe with 10" 3 jaw chuck, 19" swing, 24" swing in the gap, 78" in between centers, speeds to 1800RPM, NEWALL 2 axis D.R.O S/N: 077896

HECKER 6' radial arm drill with 54" under spindle, speeds to 1700RPM, 28" X 28" X 28" t-slot box table S/N: N/A

KBL 20VS vertical mill with 50" X10" t-slot table, 3HP, speeds to 4200RPM, MITUTOYO 2 axis D.R.O S/N: N/A

MODERNE ZW5050 gearhead drill with 20" X 15" t-slot table, speeds to 1800RPM S/N: H05225

MEDIA BLAST EQUIPMENT

AGTOS / OCEAN (2016) RT05-10-01-306-04-07., 5-wheel tunnel type structural steel media blasting line consisting of OCEAN PLC control, AGTOS/OCEAN 16' media blasting unit with 42" X 21" opening, AGTOS 10HP main turbine, (4) AGTOS 6.5HP auxiliary turbines, AGTOS dust collector, 36' X 40" infeed conveyor, 47' X 40" outfeed conveyor S/N: N/A

PANGBORN through type 8 wheel shot blast system with PLC control, (8) 30HP turbines, 5' X 11' tunnel, chain infeed rail cart system, S/N: N/A

PLATE FABRICATION EQUIPMENT

PYTHONX / ABB CNC plasma cutting robot cell consisting of PYTHONX 6 axis robot with plasma cutting head, ABB robot controller, KEBA touch screen pendant, HYPERTHERM HPR260 plasma power source, BURLINGTON AUTOMATION 10' X 10' cell, 47' X 46" programmable infeed conveyor, 19' X 46" outfeed conveyor, DONALDSON TORIT (6) bag dust collector with DELTA 6 PLC control S/N: C0W731-5

(2) **PEDDINGHAUS** (2006 / N/A) OCEAN AVENGER MDC100 single spindle CNC beam drill lines with SIEMENS PLC control, 25' X 6' rack, 40' max beam size, FLODYNE 20HP hydraulic power pack S/N: N/A / N/A

PEDDINGHAUS OCEAN CLIPPER CNC angle plate processing line consisting of SIEMENS PLC control, 100T shear capacity, 75T punch capacity, 13.5HP drill with speeds to 850RPM, 1 1/2" X 1 1/2" X 1/8" to 6" X 6" X 5/8" angle plate capacity, 61' P/MIN X-axis feed, 37' infeed conveyor S/N: N/A

(2) **HEARN** D17A XY portable table type gantry drills S/N: 1037 / N/A

(2) **HEARN** STD7AC XY portable table type gantry drills S/N: 1289 / 1293

(2) **HEARN** STD7BA XY portable table type gantry drills S/N: 1106 / 1290

TRANSPORT TRAILERS

CHALLENGER (2015) 48' TRI/A RGN trailer with 22' well, 120,200LBS GVWR, 25,000LBS axles, 420CC gas engine VIN: 1W8A11E3XF5000246

TITAN (2008) 48' 5 axle flat deck trombone trailer with 112,235LBS GVWR, 22,487LBS primary axles, 19,841LBS lift axles VIN: 2TVTBT1Z639D000137

STOUGHTON (1994) AVN-48STRI-AR 48' 4 axle flat deck trombone trailer with 89,983LBS GVWR, 20,000LBS axles VIN: 1DWLA483X55973315

ROLLING STOCK

DOOSAN DL220 front end wheel loader with 8' 3YRD bucket, DOOSAN DL06 147HP turbo diesel engine, auxiliary remote, 11,893HRS (recorded on meter at time of listing) S/N: DHKCWLAXEA0005014

(2) **GROVE** mobile cranes with DETROIT DIESEL V8 engine, 4WD, outriggers, 80,000LBS max capacity at 34' / 10 degrees, 14,605LBS max line pull capacity, 81' max boom length, 75.5 degrees max boom angle, HRS N/A S/N: 33378 / N/A

KROPF INDUSTRIAL (2012) CONOLIFT mobile gantry lift with CATERPILLAR diesel engine, 4WD, LAIRD wired pendant control, 50-ton capacity, 15' span, 15' height under hook VIN: 2C9SF50C22

KROPF INDUSTRIAL mobile gantry lift with JOHN DEERE diesel engine, 2WD, 25-ton capacity, 20' span S/N: N/A

PETERBILT (2006) 379 T/A transport truck with CATERPILLAR 6N2 turbo diesel engine, EATON FULLER 18SPD manual transmission, 20,000LBS rear axles, 12,000LBS, front axle, single sleeper, 1,107,477KM (recorded on odometer at time of listing), 18,508HRS (recorded on meter at time of listing) VIN: 1XP5DU9X67N658158 *cat platinum rebuild kit done April 10, 2022, at 1,050,000KM*

PETERBILT (2004) 379 T/A transport truck with CATERPILLAR C15 twin turbo diesel engine, EATON FULLER 18SPD manual transmission, 20,000LBS rear axles, 14,500LBS front axle, single sleeper, 510,052KM (recorded on odometer at time of listing) VIN: 1XP5DB9X64D823485

INTERNATIONAL (2003) 8600 T/A transport truck with CUMMINS ISMC turbo diesel engine, EATON FULLER 10SPD manual transmission, 20,000LBS axles, N/A KM, VIN: IHSHXHR33J075742

STERLING (2000) T/A crane truck with CATERPILLAR C10 370HP diesel engine, EATON FULLER 10SPD manual transmission, 20' steel deck, NATIONAL 900 50,000LBS capacity crane, outriggers, KMS N/A VIN: 2FZXKEDB34AF29837

WELDING EQUIPMENT

LINCOLN ELECTRIC CLASSIC 300 gas powered welder generator with 3644HRS (recorded at time of listing) S/N: L1020300183

LINCOLN ELECTRIC VANTAGE 300 diesel powered welder generator with 4113HRS (recorded at time of listing) S/N: U1120703723

(2) **NELSON** NELWELD 6000 stud welders S/N: 10011649 / 10039139

NELSON NELWELD 4000 stud welder S/N: 10000404

MILLER PROHEAT 35 digital mig welder S/N: LGO49047

(4) **MILLER** DELTAFAB mig welders with MILLER 24A mig wire feeder S/N: CH360216C / CH360215C / LH360192C / LH3602136

MILLER DELTAWELD 452 digital mig welder with MILLER 24A wire feeder S/N: KF844032

MILLER GOLDSTAR 452 digital welding power source S/N: KH476162

LINCOLN ELECTRIC IDEALARC mig welder with LINCOLN ELECTRIC LN7 wire feeder

LINCOLN ELECTRIC IDEALARC 250 mig welder with MILLER 24A wire feeder S/N: N/A

LINCOLN ELECTRIC IDEALARC DC1000 arc welder with cables and gun S/N: U1070200190

(10) **LINCOLN ELECTRIC** IDEALARC DC600 welding power sources S/N: 1050122509 / U1050321001 / U1050331000 / C1990800287 / U1050122514 / U1050331004 / U1050403201 / U1050309484 / C1020700533 / U1050321002

(3) **LINCOLN ELECTRIC** R3R-400 welding power sources S/N: C1010400669 / 196652 / C101060006

(2) **LINCOLN ELECTRIC** CV400 welding power sources S/N: C1010500040 / C1030200315

(2) **LINCOLN ELECTRIC** IDEALARC 250 welding power source S/N: U10960568/ N/A

(2) **CANOX** C-DW-45 welding power sources S/N: JG056721 / JG056728

BLUESHIELD DRIGARD 350 welding rod oven

(4) **MILLER** DELTAWELD 452 digital welding power sources S/N: KJ192091 / KF902165 / KH480703 / MD470020C

MILLER DELTAFAB welding power source S/N: LH400508C

(6) **MILLER** MAXTRON 450 CC/CV welding power sources S/N: KG186856 / KG291773 / KH330929 / KG291770 / KH304785 / KG188373

(3) **LINCOLN ELECTRIC** IDEALARC DC1000 mig welders with LINCOLN ELECTRIC LT7 wire feeder S/N: U1021101077 / U11010510365 / N/A / U1960316901

(2) **LINCOLN ELECTRIC** DC600 mig welders with LINCOLN ELECTRIC LT7 wire feeder S/N: U1050403199 / C1000100443

LINCOLN ELECTRIC IDEALARC CV400 mig welder with LINCOLN ELECTRIC LN-7 wire feeder S/N: C1010300038



ALSO: HUGE inventory of structural steel plate, angle iron and beams, welding tools and accessories featuring MILLER/LINCOLN ELECTRIC wire feeders, track welding wire feeders, welding whips, cables and hoses, flux evacuators, fume extractors, oxygen/acetylene torches and lines, power tools including magnetic base drills, industrial grinders, pneumatic/cordless HD impact guns, hydraulic powered jacks, engine stands, transmission jacks, bottle jacks, jack stands, large quantity of lifting equipment featuring crane scales, magnetic plate lifters, plate lifters, shackles, lifting chains, lifting straps, crane hooks, large inventory of hardware, steel workbenches, saw horses, roller conveyors, tool boxes, job boxes and much more!

THIS IS A PARTIAL LISTING ONLY! FOR FURTHER INFORMATION, PLEASE VISIT WWW.CORPASSETS.COM

AUCTION DETAILS

LIVE WEBCAST ONLY

INSPECTION

Tuesday, August 19 from 9 AM to 4 PM or by appointment. Please email info@corpassets.com to arrange.

REMOVAL

All assets must be removed no later than Tuesday, September 30 BY APPOINTMENT ONLY. Please email info@corpassets.com to arrange.

TERMS

Corporate Assets Inc. assumes no liability for errors or omissions in this brochure. Corporate Assets Inc. expressly reserves the right to determine the manner of conducting the auction as it may deem appropriate. All subject to prior sale.

PAYMENT

A Buyer's Premium will apply at this sale. International & online bidders may need a refundable deposit to bid. **SALE WILL BE CONDUCTED IN USD.**

Please refer to our website at www.corpassets.com or call 416.962.9600 for further information. Pour les services en français, composez le 1.855.583.5551

We Accept



Please visit our website as specific terms and conditions may apply.

BID ONLINE AT: BidSpotter

AFFILIATIONS



©2024 CORPORATE ASSETS INC. ALL RIGHTS RESERVED.

SURPLUS EQUIPMENT?
 TURN IDLE ASSETS INTO **CASH!**

WE BUY & SELL YOUR SURPLUS MACHINERY

ONE MACHINE OR ENTIRE PLANTS, WE HAVE OVER 60 YEARS EXPERIENCE TO SELL YOUR EQUIPMENT AT FAIR MARKET VALUE.

CONTACT US TODAY TO LEARN MORE! 416.962.9600

SUBSCRIBE TO OUR NEWSLETTER AND GET THE LATEST AUCTION UPDATES

CORPORATE ASSETS INC

corpassets.com/newsletter-signup