

**CORPORATE
ASSETS INC**

ONLINE AUCTION

JD NORMAN CANADA, ULC



**MARK YOUR
CALENDARS!**

**Wednesday, June 9
9:30 A.M. EDT**

6845 Hawthorne Dr.,
Windsor, Ontario, N8T 3B8

INSPECTION: BY APPOINTMENT ONLY. Please email
info@corpassets.com to arrange a date and time.

LIVE WEBCAST ONLY

BidSpotter.com

**COMPLETE TIER 1 AUTOMOTIVE (SPECIALTY FORMED)
CAST & MACHINED PARTS MANUFACTURING FACILITY**



AUCTION CONDUCTED BY:

CORPORATE ASSETS INC

"Let Our Experience Be Your #1 Asset"™

373 Munster Avenue, Toronto, ON, Canada M8Z 3C8

www.corpassets.com • 416.962.9600 • info@corpassets.com

2016



TRI-WAY LVL automotive flexible manufacturing line

2016



TWIN STATION

TRI-WAY OP10 4-axis CNC horizontal machining center

2016



TRI-WAY OP20 hydraulic fracturing and assembly machine

2016



SERVO DRIVEN

TRI-WAY OP30 hardware insertion press

2016



SIEMENS CNC

C&B SDG6-42 CNC horizontal double disk grinder

2016



ACCU-CUT vertical honing machine

2016



MDI-JD NORMAN OP70 high volume through type uplift hot parts washer

2014



10,000 RPM

DOOSAN HC400 twin pallet CNC horizontal machining center



View of hydraulic clamping tombstones



View of FANUC 321B CNC control

2004



TWIN PALLET, TWIN SPINDLE

CHIRON DZ 15K W MAGNUM high speed 5-axis CNC machining center



View of CHIRON 12,000 RPM twin spindles

2013



FANUC M-710IC 6-axis pick and place loading robot

(4) CNC HORIZONTAL DOUBLE DISK GRINDERS AVAILABLE NEW AS 2016

2016



42" DIA OPPOSING WHEELS

C&B SDG6-42 CNC horizontal double disk grinder



REMANUFACTURED 2012

C&B SDG6-42 CNC horizontal double disk grinder



2 AVAILABLE

LANDIS GRDNER SDG6-42 CNC horizontal double disk grinders



View of 42" grinding wheels

2016



ACCU-CUT ACCUBORE 2X3SM-1 CNC (6) spindle precision vertical honing machine



NAGEL OP80 CNC double spindle, vertical in-line precision honing machine

CONTACT 416.962.9600 TO CONSIGN EQUIPMENT AT AN UPCOMING AUCTION

PARTIAL VIEW OF AUTOMOTIVE FLEXIBLE MANUFACTURING LINES



TRI-WAY L850 automotive flexible manufacturing line



TRI-WAY FCA-CHRY automotive flexible manufacturing line



TRI-WAY FLEX automotive flexible manufacturing line



TO SCHEDULE AN AUCTION CONTACT 416.962.9600

LATE MODEL QUALITY CONTROL DEPARTMENT & FACTORY EQUIPMENT



12,000 CFM CAPACITY

MONROE ENVIRONMENTAL OMCH-120-12 mist collector



350 GPM CAPACITY

HENRY centralized coolant filtration system



AS NEW AS 2013

4 AVAILABLE UP TO 125HP

ATLAS COPCO rotary screw type air compressors



2015

FRIULAIR ACT800-UQ refrigerated air dryer



SULLAIR RD850 refrigerated air dryer



2016

ZEISS DURAMAX 5/5/5 CMM



MITUTOYO MF 176-532A digital measuring microscope



Partial view of QC inspection equipment available



View of gauge bench

THIS BROCHURE IS ONLY A PARTIAL LISTING. PLEASE VISIT OUR WEBSITE



7,400 LBS CAPACITY

YALE LPG forklift



SKYJACK SJI-3220 electric scissor lift



JUSTRITE safety cabinets



GRIP 1345 tool room lathe



KENT KGS-250AH hydraulic surface grinder



ROYAL digital tool presetter



KING KC-450 metal cutting band saw



KBC S-2A vertical turret milling machine



Late model shop press



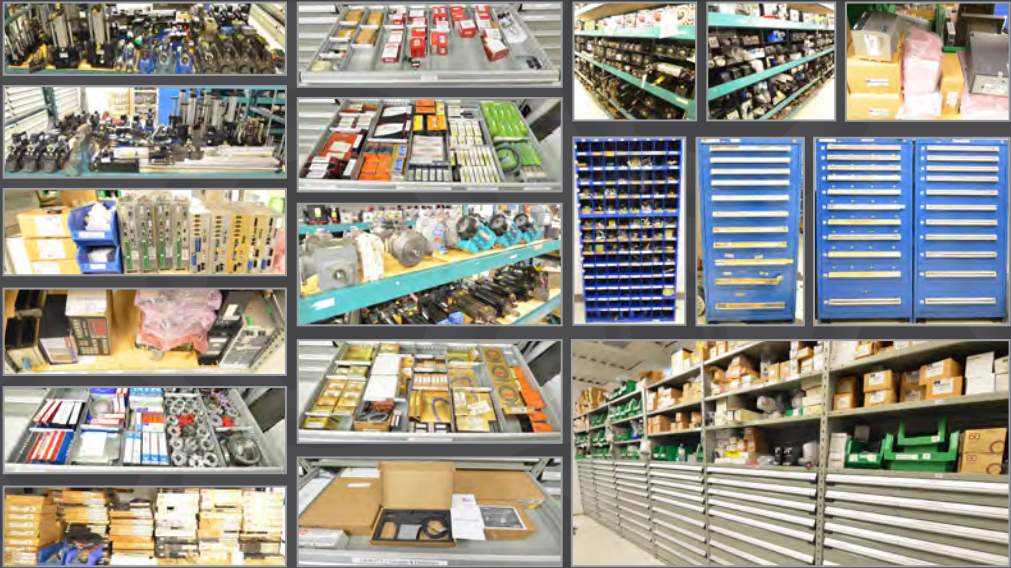
BIEXI oil storage tanks with digital metered dispensing guns



O'BRIEN 2000 lb jib crane



Large quantity of stacking bins available



ALSO: Q.C. and inspection equipment including (5) portable gage inspection stations with roll-up doors, air gages, digital gages, snap gages, micrometers, digital inspection equipment and granite surface plates; selection of perishable tooling including carbide cutters, drills, end mills and broaches, carbide inserts, tool holders and setters; (10+) LISTA and ROUSSEAU tool storage cabinets and shelving; FASTENAL index cabinets with fastening hardware and supplies; LARGE SELECTION OF SPARE PARTS INVENTORY including ALLEN BRADLEY and REXROTH INDRAMAT PLC controllers and HMI screens, spare boards, spindles and drives, brand name electrical components, hydraulic pumps, drives, motors, cylinders and accumulators, pneumatic cylinders and control valves, selection of BRAND NAME BEARINGS; (5+) AIRVAC drum vacuums; BILXI oil storage tanks with digital metered dispensing guns; cleaning and sanitizing supplies; (2) gas powered pressure washers; racking, shelving and dunnage; office furniture including boardroom tables with chairs, executive desks and furniture, (5+) flat screen tv's, business machines; stainless steel appliances, lockers and MUCH MORE!

THIS IS A PARTIAL LISTING ONLY! FOR FURTHER INFORMATION, PLEASE VISIT WWW.CORPASSETS.COM

AUCTION DETAILS

LIVE WEBCAST ONLY

INSPECTION

BY APPOINTMENT ONLY. Please email info@corpassets.com to arrange a date and time.

REMOVAL

All assets must be removed no later than Wednesday, June 30 BY APPOINTMENT ONLY. Please email info@corpassets.com to arrange.

TERMS

Corporate Assets Inc. assumes no liability for errors or omissions in this brochure. Corporate Assets Inc. expressly reserves the right to determine the manner of conducting the auction as it may deem appropriate. All subject to prior sale.

PAYMENT

A Buyer's Premium will apply at this sale. International & online bidders may need a refundable deposit to bid. SALE WILL BE CONDUCTED IN USD.

Please refer to our website at **www.corpassets.com** or call 416.962.9600 for further information. Pour les services en français, composez le 1.855.583.5551

We Accept



Please visit our website as specific terms and conditions may apply.

BID ONLINE AT: **BidSpotter.com**

AFFILIATIONS



©2020 CORPORATE ASSETS INC. ALL RIGHTS RESERVED.

SURPLUS EQUIPMENT?

TURN IDLE ASSETS INTO CASH!

WE BUY & SELL YOUR SURPLUS MACHINERY

ONE MACHINE OR ENTIRE PLANTS, WE HAVE OVER 60 YEARS EXPERIENCE TO SELL YOUR EQUIPMENT AT FAIR MARKET VALUE.

CONTACT US TODAY TO LEARN MORE! 416.962.9600

SUBSCRIBE TO OUR NEWSLETTER AND GET THE LATEST AUCTION UPDATES

CORPORATE ASSETS INC.

corpassets.com/newsletter-signup