

ONLINE AUCTION

**CORPORATE
ASSETS INC**

LARGE FORKLIFT LEASE RETURN EVENT #5



**Wednesday, November 17
2:00 P.M. EST**

**MARK YOUR
CALENDARS!**

6505 Edwards Blvd.,
Mississauga, ON, L5T 2V2

INSPECTION: BY APPOINTMENT ONLY. Please email
info@corpassets.com to arrange a date & time.

LIVE WEBCAST ONLY

BidSpotter

LATE MODEL OFFERING OF MATERIAL HANDLING EQUIPMENT!



AUCTION CONDUCTED BY:

CORPORATE ASSETS INC

"Let Our Experience Be Your #1 Asset"™

373 Munster Avenue, Toronto, ON, Canada M8Z 3C8

www.corpassets.com • 416.962.9600 • info@corpassets.com

LATE MODEL OFFERING OF LPG & ELECTRIC LIFTS AVAILABLE



8,000 LBS CAPACITY

TOYOTA 02-FG35 LPG forklift



2013

TOYOTA 7FBCU18 36V electric forklift



2009

DREXEL SLT22 36V 3 wheel electric forklift



4,000 LBS CAPACITY

CATERPILLAR EP20T 48V 3 wheel electric forklift



HYSTER J35XM 36V 3 wheel electric forklift



3 AVAILABLE

6,000 LBS CAPACITY

RAYMOND 8400 FRE60L 24V ride-on electric pallet jack



2007

CROWN PE4500-60 24V ride-on electric pallet jack

LPG & ELECTRIC FORKLIFTS

TOYOTA 02-FG35 LPG forklift with 8000 lb. capacity, 185" max. lift height, 3 stage mast, side shift, multi-surface tires, 9559 key hours (recorded on meter at time of listing), s/n: 30215

TOYOTA (2013) 7FBCU18 36V electric forklift with 4000 lb. capacity, 189" max. lift height, 3 stage mast, side shift, solid tires, 5187 drive hours (recorded on meter at time of listing), s/n: 67174

DREXEL (2009) SLT22 36V 3 wheel electric forklift with 2200 lb. capacity, 172" max. lift height, 3 stage mast, solid tires, s/n: 905071-103

CATERPILLAR EP20T 48V 3 wheel electric forklift with 4000 lb. capacity, 189" max. lift height, 3 stage mast, side shift, solid tires, 2481 key hours (recorded on meter at time of listing), s/n: 5TM01245

HYSTER J35XM 36V 3 wheel electric forklift with 3500 lb. capacity, 189" max. lift height, 3 stage mast, side shift, solid tires, 639 key hours (recorded on meter at time of listing), s/n: C160170170R

ELECTRIC REACH TRUCKS

RAYMOND (2010) EZ-R40TT 36V electric reach truck with 4000 lb. capacity, 241" max. lift height, 3 stage mast, solid tires, 9192 drive hours (recorded on meter at time of listing), s/n: EZ-10-DF50407

RAYMOND (2006) 7400 DR32TT 36V electric deep reach truck with 3200 lb. capacity, 252" max. lift height, 3 stage mast, solid tires, 13,584 drive hours (recorded on meter at time of listing), s/n: 740-06-AA04991

RAYMOND (2004) R40TT 36V electric reach truck with 4000 lb. capacity, 240" max. lift height, 3 stage mast, solid tires, 8399 drive hours (recorded on meter at time of listing), s/n: EZ-D-04-30233

CONTACT 416.962.9600 TO CONSIGN EQUIPMENT AT AN UPCOMING AUCTION

2013



RAYMOND RAS25-TF 24V walk-behind electric pallet stacker

2 AVAILABLE



4,000 LBS CAPACITY

RAYMOND RSS-08-03190 24V walk-behind electric pallet stacker

2 AVAILABLE



3,000 LBS CAPACITY

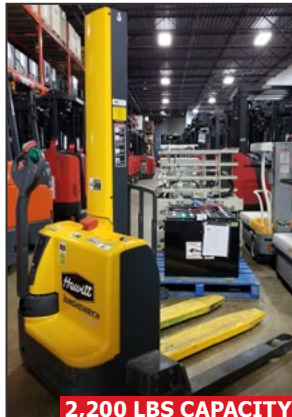
BIG JOE PDM30-154 24V walk-behind electric pallet stacker

2007



2 AVAILABLE

BIG JOE PDM30-106 24V walk-behind electric pallet stacker



2,200 LBS CAPACITY

JUNGHEINRICH EMC B10 24V walk-behind electric pallet stacker



CROWN SP3400 24V electric order picker forklift

ELECTRIC REACH TRUCKS

RAYMOND (2002) EZ-DR25TT 36V electric deep reach truck with 2500 lb. capacity, 253" max. lift height, 3 stage mast, solid tires, 12,374 drive hours (recorded on meter at time of listing), s/n: EZ-A-02-24729

YALE NR040ANS24TE091 24V electric reach truck with 4000 lb. capacity, 203" max. lift height, 3 stage mast, side shift, solid tires, 2614 drive hours (recorded on meter at time of listing), s/n: B815N04284X

ELECTRIC PALLET STACKERS

RAYMOND (2013) RAS25-TF 24V walk-behind electric pallet stacker with 2500 lb. capacity, 128" max. lift height, on-board battery charger, 3769 key hours (recorded on meter at time of listing), s/n: RAS-13-06067

ELECTRIC PALLET STACKERS

RAYMOND (2008) RSS-08-03190 24V walk-behind electric pallet stacker with 4000 lb. capacity, 128" max. lift height, on-board battery charger, 13,231 key hours (recorded on meter at time of listing), s/n: RSS-08-03190

RAYMOND (2006) RSS-08-03190 24V walk-behind electric pallet stacker with 4000 lb. capacity, 128" max. lift height, on-board battery charger, 2859 key hours (recorded on meter at time of listing), s/n: RSS-06-02719

RAYMOND (2001) RWR30 24V walk-behind electric reach truck with 3000 lb. capacity, 153" max. lift height, on-board battery charger, 308 key hours (recorded on meter at time of listing), s/n: RWR30-01-00231

BIG JOE (2011) PDM30-154 24V walk-behind electric pallet stacker with 3000 lb. capacity, 154" max lift height, 20,847 key hours (recorded on meter at time of listing), s/n: 4447041

BIG JOE (2007) PDM30-154 24V walk-behind electric pallet stacker with 3000 lb. capacity, 154" max lift height, 514 key hours (recorded on meter at time of listing), s/n: 382289

LARGE FORKLIFT LEASE RETURN EVENT #5

Wednesday, November 17
Mississauga, Ontario, Canada



2015

RAYMOND 102T F45L 24V walk-behind electric pallet jack



2014

CROWN WP3035-45 24V electric pallet jack



2008

TENNANT T15 24V ride-on electric floor scrubber



2008

TENNANT T15 24V ride-on electric floor scrubber



2013

CROWN WAV50-118 24V electric order picker



2010

CROWN WAV50-118 24V electric order picker



2011

CROWN WAV50-118 24V electric order picker

ALSO: (2) RAYMOND (2008) 8400 FRE60L 6000 lb. cap. 24V ride-on electric pallet jacks; RAYMOND (2015) 102T F45L 4500 lb. cap. 24V walk-behind electric pallet jacks; CROWN (2014) WP3035-45 4500 lb. cap. 24V walk-behind electric pallet jack; CROWN (2005) SP3400 3000 lb. cap. 24V electric order picker forklift; (4) CROWN WAV50-118 500 lb. cap. 24V electric order pickers; (2) TENNANT (2008) T15 24V ride-on electric floor scrubbers and MORE!

THIS IS A PARTIAL LISTING ONLY! FOR FURTHER INFORMATION, PLEASE VISIT WWW.CORPASSETS.COM

AUCTION DETAILS

LIVE WEBCAST ONLY

INSPECTION

BY APPOINTMENT ONLY. Please email info@corpassets.com to arrange a date and time.

REMOVAL

All assets must be removed no later than Tuesday, November 30 BY APPOINTMENT ONLY. Please email info@corpassets.com to arrange.

TERMS

Corporate Assets Inc. assumes no liability for errors or omissions in this brochure. Corporate Assets Inc. expressly reserves the right to determine the manner of conducting the auction as it may deem appropriate. All subject to prior sale.

PAYMENT

A Buyer's Premium will apply at this sale. International & online bidders may need a refundable deposit to bid. **SALE WILL BE CONDUCTED IN CAD.**

Please refer to our website at www.corpassets.com or call 416.962.9600 for further information. Pour les services en français, composez le 1.855.583.5551

We Accept



Please visit our website as specific terms and conditions may apply.

BID ONLINE AT: **BidSpotter**

AFFILIATIONS



©2021 CORPORATE ASSETS INC. ALL RIGHTS RESERVED.

SURPLUS EQUIPMENT?

TURN IDLE ASSETS INTO CASH!

WE BUY & SELL YOUR SURPLUS MACHINERY

ONE MACHINE OR ENTIRE PLANTS, WE HAVE OVER 60 YEARS EXPERIENCE TO SELL YOUR EQUIPMENT AT FAIR MARKET VALUE.

CONTACT US TODAY TO LEARN MORE! 416.962.9600

SUBSCRIBE TO OUR NEWSLETTER AND GET THE LATEST AUCTION UPDATES

corpassets.com/newsletter-signup