

**CORPORATE
ASSETS INC**

ONLINE AUCTION

JV DRIVER (EDMONTON)



**4 DAY
SALE!**



Monday, July 27 • 9:30 A.M. MDT
Tuesday, July 28 • 9:30 A.M. MDT
Wednesday, July 29 • 9:30 A.M. MDT
Thursday, July 30 • 9:30 A.M. MDT

706, 25 Avenue, Nisku, Alberta, T9E 0G6

INSPECTION: BY APPOINTMENT ONLY. Please email at info@corpassets.com for details.

LIVE WEBCAST ONLY

BidSpotter.com

MAJOR 4 DAY & MULTI-MILLION DOLLAR FABRICATING EVENT!



AUCTION CONDUCTED BY:

CORPORATE ASSETS INC

"Let Our Experience Be Your #1 Asset"™

373 Munster Avenue, Toronto, ON, Canada M8Z 3C8

www.corpassets.com • 416.962.9600 • info@corpassets.com

(26) STATION SEMI-AUTOMATIC FABRICATING PRODUCTION LINE



CNC PIPE PROFILER

VERNON TOOL (RETROFIT 2011) MPM5-0348-VP 5 axis plasma/oxy-fuel CNC pipe processing machine with WINDOWS PC based touch screen CNC control, 4" - 48" work piece diameter capacity, 40' max workpiece length, HYPER THERM MAX 200 plasma power supply with cutting head, oxy-fuel cutting head, 460v/3ph/60hz, s/n 6259

MAXIRAIL 40' overhead fume extractor system with (2) traversing snorkel exhausts, blower and ductwork, s/n n/a

WELDING & FABRICATION

FICEP/JV DRIVERS (26) station semi-automatic fit-up and fabricating line consisting of approx. 200' x 48" sectional powered roller conveyor with hydraulic push/pull stations, (12) CRANE SERVICE 2 ton capacity floor type jib cranes with 14' span, 10' max height under the hook, KONE 2 ton capacity electric chain hoists and snorkel type fume extractors with blowers, (12) CRANE SERVICE 2 ton capacity column mounted type jib cranes with 14' span, 10' max height under the hook, KONE 2 ton capacity electric chain hoists and snorkel type fume extractors with blowers, (23) LINCOLN MIG welders, (10) hydraulic scissor lift tables, hydraulic power packs, controls and integration, s/n n/a (MAY BE SOLD IN BULK OR BY COMPONENTS)

THIS BROCHURE IS ONLY A PARTIAL LISTING. PLEASE VISIT OUR WEBSITE

LARGE ASSORTMENT OF WELDING POSITIONERS AVAILABLE



WELDING POSITIONERS

ARONSON CP500-400 50,000 lbs capacity tilt & rotate welding positioner with 64" diameter t-slot table, PANDJIRIS C-48 3-jaw gripper chuck, pendant and foot pedal controls, s/n 7430

RANSOME 250P 25,000 lbs capacity tilt & rotate welding positioner, 84"x84" table, 3-jaw gripper chuck, pendant and foot pedal controls, s/n 6521711

WORTHINGTON 160P 10,000 lbs capacity tilt & rotate welding positioner, 53"x53" table, 3-jaw gripper chuck, pendant and foot pedal controls, s/n 53434

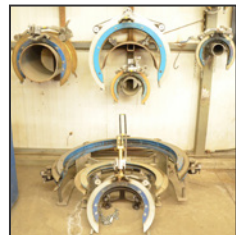
RANSOME 100P_B 10,000 lbs capacity tilt & rotate welding positioner, 46" table, 3-jaw gripper chuck, pendant and foot pedal controls, s/n 2125648

RANSOME 100P 10,000 lbs capacity tilt & rotate welding positioner, 46" table, 3-jaw gripper chuck, pendant and foot pedal controls, s/n 215679

L.J WELDING & MACHINE 3,000 lbs capacity manual tilt and power rotate welding positioners with 16" 3-jaw chucks, s/n n/a

TE WWW.CORPASSETS.COM FOR MORE DETAILED LISTINGS AND PHOTOS.

LATE MODEL 5-AXIS PIPE FABRICATION DEPARTMENT



FREESTANDING OUTDOOR OVERHEAD BRIDGE CRANE SYSTEMS

S.W.L freestanding outdoor overhead crane system consisting of: P&H outdoor 10 tonne capacity, top running, double girder overhead bridge crane with approx. 60' span, 30' max height under the hook, pendant control, 2-speed all directions, s/n 110419 (YARD); S.W.L. outdoor 10 tonne capacity, top running, double girder overhead bridge crane with approx. 60' span, 30' max height under the hook, pendant control, 2-speed all directions, s/n n/a (YARD); LOT approx. 800' outdoor freestanding crane runway with buss bar (YARD)(MAY BE OFFERED BY COMPONENTS)

P&H outdoor 10 tonne capacity, top running, single girder overhead bridge crane with approx. 48' span, 20' max height under the hook, wireless radio pendant control, 2-speed all directions, s/n E110420 (yard)

Approx. 150' outdoor freestanding crane runway with buss bar (YARD)

THIS BROCHURE IS ONLY A PARTIAL LISTING. PLEASE VISIT OUR WEBSITE

(85+) ACRES OF PRODUCTION SUPPORT EQUIPMENT AVAILABLE



TE WWW.CORPASSETS.COM FOR MORE DETAILED LISTINGS AND PHOTOS.

LATE MODEL OFFERING OF MATERIAL HANDLING EQUIPMENT



MATERIAL HANDLING EQUIPMENT

HYUNDAI (2011) 160-7E DIESEL outdoor forklift with 35,000 lbs capacity, 3-stage mast, 197" max vertical reach, side shift, hydraulic fork spreader, HYUNDAI HE6.7 turbo diesel engine with 190 hp, auto transmission, dually, climate controlled factory full cab enclosure with heat/AC, approx. 8,900 hours recorded on meter at the time of listing, s/n HHHH FT08 AB00 00490

JCB (2009) 550-170 rough terrain telehandler forklift with 10,000 lbs capacity, 4-stage mast, 55' max lift height, 41' max forward reach, 4WD, 4 wheel steering, 4.4 liter turbo diesel engine with 100 hp, full cab enclosure with heat, approx. 8,500 hours recorded on meter at the time of listing, s/n JCB5 AMSG L915 14570

JCB 550-170 rough terrain telehandler forklift with 10,000 lbs capacity, 4-stage mast, 55' max lift height, 41' max forward reach, 4WD, 4 wheel steering, 4.4 liter turbo diesel engine with 100 hp, full cab enclosure with heat, approx. 8,000 hours recorded on meter at the time of listing, s/n JCB5 AMSG J0214 7337

MANITOU (2013) MT5519 outdoor telehandler forklift with 5,500 lbs capacity, 2-stage mast, 19' max lift height, 20' max forward reach, 4WD, 4 wheel steering, YANMAR turbo diesel engine with 68 hp, full cab enclosure with heat, approx. 5,700 hours recorded on meter at the time of listing, s/n YE0525128

JLG (2012) 600AJ rough terrain articulating boom lift with 500 lbs capacity, 60' max lift height, 39' max reach, 4WD, hydraulic leveling, approx. 5,100 hours recorded on meter at the time of listing, s/n 0300159552

GENIE (2007) Z-80/60 rough terrain boom lift with 500 lbs capacity, 80' max lift height, 60' max reach, 4WD, hydraulic leveling, approx. 6,700 hours recorded on meter at the time of listing, s/n Z8007-1626

KUBOTA (2015) RTV-X1100C side by side rough terrain vehicle with 24.8 hp KUBOTA 3 cylinder diesel engine, 4WD, auto transmission, 1,600 lbs payload capacity, 1,300 lbs towing capacity, climate controlled factory full cab enclosure with heat/AC, approx. 2,300 hours recorded on meter at the time of listing, s/n A5KC 2GDB CFG0 19724

CONTACT 416.962.9600 TO CONSIGN EQUIPMENT AT AN UPCOMING AUCTION

TREMENDOUS OFFERING OF SUPPORT EQUIPMENT AVAILABLE



TO SCHEDULE AN AUCTION CONTACT 416.962.9600



WELDING & FABRICATION

(6) **MILLER** XMT 304 CC/CV DC inverter digital ARC welders, s/n n/a

(4) **MILLER** XMT350 AUTOLINE digital welders, s/n n/a

(4) **MILLER** PIPEWORX 350 FIELD PRO digital welders, s/n n/a

MILLER SPECTRUM 2050 digital welder, s/n n/a

(17) **LINCOLN** ELECTRIC INVERTEC V350-PRO digital welders, s/n n/a

(6) **LINCOLN** ELECTRIC INVERTEC V450-PRO digital welders, s/n n/a

MILLER LNSW-52T 2.5KVA portable spot welder with 5" throat, s/n n/a

MILLER DIMENSION 452 CC/CV-DC digital MIG welder with cables and gun, s/n n/a

STEEL TAILOR (2007) MODEL P portable CNC cantilever type oxy-fuel track cutter with digital programmable control, 47" x 78" cutting range, s/n SKS05 707-LAE

VICTOR MODEL 100 oxy-fuel track cutter, s/n n/a

CANTEK VE-250-CSA metal cutting horizontal band saw with 10"x18" capacity, miter capability, 2.5 hp, s/n 1195902

WESTWARD DP2707 heavy duty floor type drill press, 110v/1ph/50-60hz, s/n 0677

PONY WALL STORAGE BUILDINGS

CLEAR-TEK 100'x40' pony wall storage building with end-to-end 14'x14' roll up overhead doors, man doors, radiant tube heaters, power and lights, white polyethylene cover over galvanized steel frame construction, s/n n/a

CLEAR-TEK 60'x40' pony wall storage building with 14'x14' roll up overhead door, man doors, radiant tube heaters, power and lights, white polyethylene cover over galvanized steel frame construction, s/n n/a

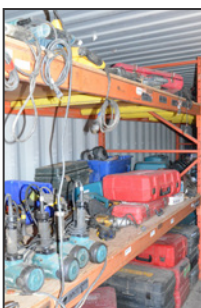
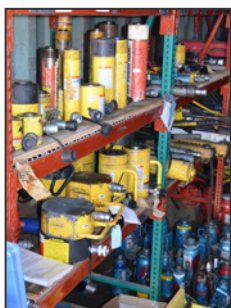
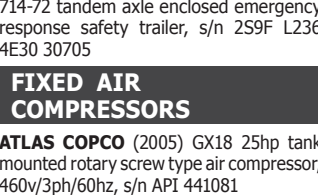
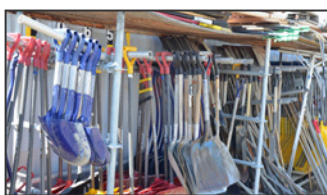
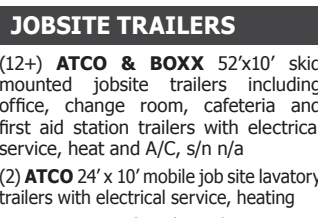
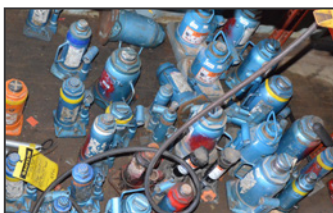
JOBSITE SUPPORT EQUIPMENT

NORTHERN 55 M3 water tank with auxiliary potable water tanks, s/n n/a

(3) **WESTERN** TRANS-CUBE 10 TCG portable fuel cubes with 1000 liter – 264 gal capacity, metered fuel pump with dispensing gun, s/n n/a

(3) **WESTEEL** portable fuel tanks with metered fuel pump and dispensing gun, s/n n/a

BOUNDARY ELECTRIC self-contained portable electrical substation with GE AKD-10 4-ckt switchgear panel with main breaker and instrumentation, container mounted with (2) man doors, I/O back panel, insulated 20' sea container, s/n n/a



JOBSITE TRAILERS

(12+) **ATCO & BOXX** 52'x10' skid mounted jobsite trailers including office, change room, cafeteria and first aid station trailers with electrical service, heat and A/C, s/n n/a

(2) **ATCO** 24' x 10' mobile job site lavatory trailers with electrical service, heating

ROYAL CARGO (2014) TRA/REM CHT35-714-72 tandem axle enclosed emergency response safety trailer, s/n 259F L236 4E30 30705

FIXED AIR COMPRESSORS

ATLAS COPCO (2005) GX18 25hp tank mounted rotary screw type air compressor, 460v/3ph/60hz, s/n API 441081

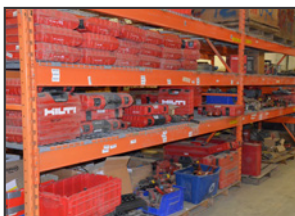
ATLAS COPCO (2008) SF11 15 hp oil free rotary screw type air compressor with digital microprocessor control, AII693091

ATLAS COPCO CD12 desiccant type air dryer, s/n n/a

PORTABLE AIR COMPRESSORS

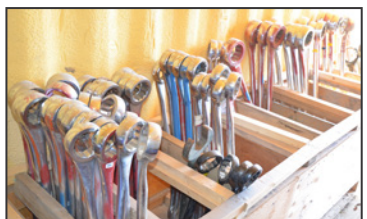
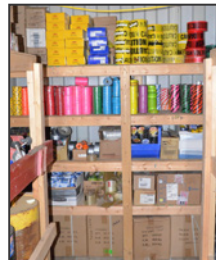
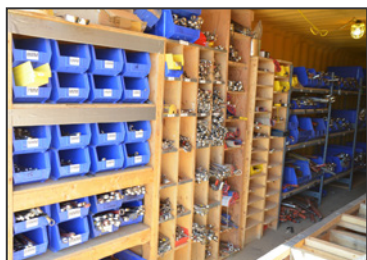
ATLAS COPCO (2013) XAS 400 JD7 DIESEL tow behind air compressor with 400 CFM @ 125 PSIG capacity, JOHN DEERE diesel engine with 125 hp, approx. 1,400 hours recorded on meter at the time of listing, s/n 4500 B131 5DR0 74211

MARK YOUR CALENDARS FOR THIS UPCOMING SALE!



THIS BROCHURE IS ONLY A PARTIAL LISTING. PLEASE VISIT OUR WEBSITE

TOO MANY ITEMS TO LIST! VISIT WWW.CORPASSETS.COM FOR MORE!



VISIT WWW.CORPASSETS.COM FOR MORE DETAILED LISTINGS AND PHOTOS.

JV DRIVER (EDMONTON)

Tuesday, July 28 to Friday, July 31
Nisku, Alberta, Canada



THIS IS A PARTIAL LISTING ONLY! FOR FURTHER INFORMATION, PLEASE VISIT WWW.CORPASSETS.COM

AUCTION DETAILS

LIVE WEBCAST ONLY

INSPECTION

BY APPOINTMENT ONLY. Please email info@corpassets.com to arrange a date and time.

REMOVAL

BY APPOINTMENT ONLY. Please email info@corpassets.com to arrange a date and time.

TERMS

Corporate Assets Inc. assumes no liability for errors or omissions in this brochure. Corporate Assets Inc. expressly reserves the right to determine the manner of conducting the auction as it may deem appropriate. All subject to prior sale.

PAYMENT

A Buyer's Premium will apply at this sale. International & online bidders may need a refundable deposit to bid. SALE WILL BE CONDUCTED IN USD.

Please refer to our website at **www.corpassets.com** or call 416.962.9600 for further information. Pour les services en français, composez le 1.855.583.5551

We Accept



Please visit our website as specific terms and conditions may apply.

BID ONLINE AT: BidSpotter.com

AFFILIATIONS



©2020 CORPORATE ASSETS INC. ALL RIGHTS RESERVED.

SURPLUS EQUIPMENT?

TURN IDLE ASSETS INTO
CASH!

WE BUY & SELL YOUR SURPLUS MACHINERY

ONE MACHINE OR ENTIRE PLANTS, WE HAVE OVER 60 YEARS EXPERIENCE TO SELL YOUR EQUIPMENT AT FAIR MARKET VALUE.

CONTACT US TODAY TO LEARN MORE! 416.962.9600



SUBSCRIBE TO OUR NEWSLETTER AND GET THE LATEST AUCTION UPDATES



corpassets.com/newsletter-signup