

**CORPORATE
ASSETS INC**

ONLINE AUCTION

Surplus Assets of
ARMSTRONG FLOORING



Armstrong
FLOORING



**Tuesday, September 1
10:30 A.M. EDT**

**MARK YOUR
CALENDARS!**

2500 Columbia Avenue,
Lancaster, PA, USA, 17604

INSPECTION: BY APPOINTMENT ONLY. Please email
info@corpassets.com to arrange a date and time.

LIVE WEBCAST ONLY

BidSpotter.com

COMPLETE VINYL FLOORING PILOT PLANT



AUCTION CONDUCTED BY:

CORPORATE ASSETS INC

"Let Our Experience Be Your #1 Asset"™

373 Munster Avenue, Toronto, ON, Canada M8Z 3C8

www.corpassets.com • 416.962.9600 • info@corpassets.com

SAUERESSIG ENGINEERING 3 ROLL "Z" FRAME CALENDAR LINE



"Z" FRAME CALENDAR LINE

SAUERESSIG ENGINEERING 3 roll "Z" frame calendar line with dual auto-edge guided upstream unwind stand with brake and 3" cores; pull roll infeed assembly; SAUERESSIG 3 roll calendar nominal with 25" roll width X 12" OD; heating/cooling rotary unions; cooled chrome plated pick off roll; single guided downstream unwind; dual single position rewinds with independent motor drives and operator control panel, s/n: n/a

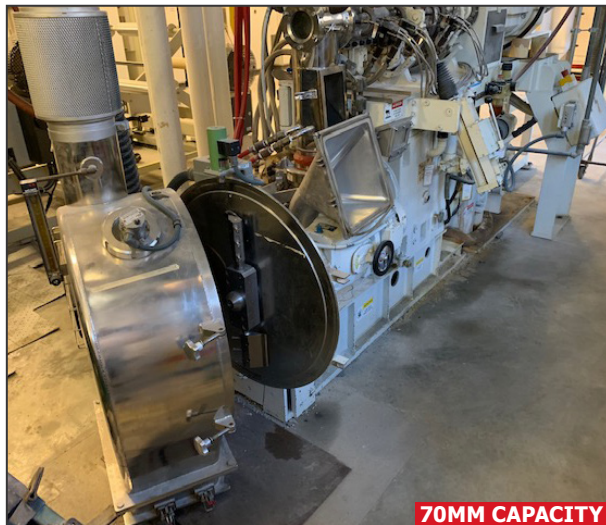
INSPECTION IS BY APPOINTMENT ONLY. Please email info@corpassets.com to arrange a date & time.

THIS BROCHURE IS ONLY A PARTIAL LISTING. PLEASE VISIT OUR WEBSITE

BUSS PR 70 70MM PELLETIZING LINE



2001
BUSS PR 70 70mm pelletizing line



BUSS KOKNEADER 11/1 L/D kneader



Dual crammer feeder



3 AVAILABLE
KRON feeders



2 AVAILABLE
STERLCO hot oil heaters



SS air cooled pellet cooling chamber



Pneumatic conveyor with blower

PELLETIZING LINE

BUSS PR 70 70mm pelletizing line with BUSS (2001) KOKNEADER 70mm capacity 11/1 L/D kneader driven by a 60HP, 1750/2100 RPM DC motor and SCR control; 10.5/1 gear box ratio; jacketed barrel with (2) 18 KW STERLCO hot heaters; dual crammer feeder for primary feed throat and additive throat; BUSS SSD100 approx. 100mm hot feed extruder 5/1 L/D with jacketed barrel and (2) STERLCO hot oil heaters; hot melt extruder with hot cut pelletizer; pneumatic conveyor with blower; stainless steel air cooled pellet cooling chamber; operator controls; motor drives; (3) KRON feeders with mezzanine, s/n: n/a

THIS FACILITY HAS BEEN EXCEPTIONALLY MAINTAINED



ROTOMECH ROTOGRAVURE approx. 35" 4 colour printing press



ROTOMECH roll storage racking system with elevator storage arms



BLACK BROTHERS MODEL 22D500CTR
24" glue spreader



BAKER PERKINS MODEL 52829 double armed mixer



DRAIS RM-80
post mixer



APPROX. 8"X 14" CAPACITY
STEWART BOLLING & CO MODEL 5405 2 roll mill



6"X12" CAPACITY
THROPP 2 roll mill

PRINTING PRESS

ROTOMECH ROTOGRAVURE
approx. 35" 4 colour printing
press with operator controls,
unwinder, winder & life guide

ELECTRIC OVENS

PRECISION humidity
controlled stainless steel
electric oven, s/n: n/a

HOTPACK MODEL 8396 SS
electric oven with 260 deg. C
max. temperature, s/n: n/a

HOTPACK MODEL 41247-6
electric oven with 99 deg. C
max temperature, s/n: 69114

HOTPACK MODEL 2130224-
5 electric oven with rotating
tray, s/n: 72036

CONTACT 416.962.9600 TO CONSIGN EQUIPMENT AT AN UPCOMING AUCTION

NICE OFFERING OF LABORATORY TESTING EQUIPMENT AVAILABLE



100 TON CAPACITY

WABASH MODEL 100-1818-2TSTM
up-acting 4 post hydraulic lab press



80 TON CAPACITY

WABASH MODEL 80-15-SM up-acting
4 post lab press



PRECISION humidity controlled stainless steel
electric oven



APPROX 5'W X 2'D X 4'H

FISHER HAMILTON SAFE AIRE fume
hood



APPROX 2' X 3' X 4'H

HAMILTON fume hood with glass
panel front

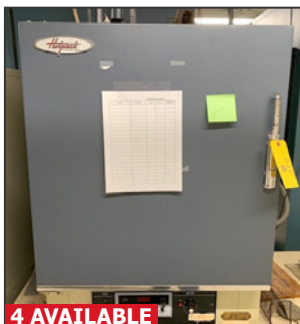


3'W X 2'D X 8'H

FISHER HAMILTON sliding door
fume hood



HOTPACK MODEL 41247-6 electric
oven



4 AVAILABLE

HOTPACK bench type electric oven

LABORATORY EQUIPMENT

WABASH MODEL 100-1818-2TSTM up-acting 4 post hydraulic lab press with 100 ton capacity, 18"x18" electric/steam heated platens, 15" daylight opening, 440V, s/n: 8208

WABASH MODEL 80-15-SM up-acting 4 post lab press with 80 ton capacity, 15"x15" steam heated platens, adjustable daylight opening, 440V, s/n: 1547

FISHER HAMILTON SAFE AIRE fume hood approx. 3'W X 2"D X 8'H

METAL LAB EQUIPMENT CORP fume hood approx. 44"W X 2'D X 6'H

INTERNATIONAL TM 646 bench-type centrifuge, s/n: n/a

TO SCHEDULE AN AUCTION CONTACT 416.962.9600



650 °F MAX TEMP

CERAMIC COATING CO. glass lined reactor with agitator



720 °F MAX. TEMP

CERAMIC COATING CO. glass lined reactor



Stainless Steel jacketed reactor with agitator



Stainless Steel jacketed reactor with agitator



Black Knox Co. NB 5621 stainless steel jacketed reactor



Partial view of **STERLCO** hot oil heaters available

ELECTRIC OVENS

(4) **HOTPACK** bench type electric ovens

BLUE M stainless steel electric oven with stand, s/n: n/a

GRIEVE EBS-350 electric oven with 350 deg. F max. temperature, s/n: n/a

REACTOR PRESSURE VESSELS

BLACK KNOX CO. NB 5621 stainless steel jacketed reactor approx. 28" dia. X 58"D with internal coil temperature control, 150 PSI @ full vacuum, 720 deg. F max. temperature, s/n: 148-881

CERAMIC COATING CO. glass lined reactor with agitator, approx. 16" OD X 30"D, 150 PSI @ full vacuum, 650 deg. F max. temperature, jacket pressure 120 PSIG, s/n: 52889

CERAMIC COATING CO. glass lined reactor approx. 14" OD X 16"D with 150 PSI @ 650 deg. F jacket (no agitator), S/N 628590

(2) Stainless Steel jacketed reactors approx. 22" OD X 14"D with agitator

MIXERS

PRODEX HENSCHEL 50JSS high intensity mixer with 50/25 HP 2 speed motor and motor starter, tier style blades and air actuated discharge, s/n: n/a

COWLES 410VHV dissolver mixer with pneumatic lift, stainless steel shaft with 8" blade, 10 HP, s/n: n/a

LODGE MIXER STEELFLOW mixer with approx. 600L non-jacketed steel mixing chamber, s/n: n/a

BAKER PERKINS MODEL 52829 double armed mixer with NABEN blades, hydraulic tilt discharge, jacketed chamber 16"X 17"X 19"D jacketed chamber, s/n: n/a

DRAIS RM-80 intensive post mixer with pneumatic lid, variable speed drive, 20" OD X 22"D stainless steel bowl, s/n: 88007

MATERIAL HANDLING EQUIPMENT

BIG JOE XT 805 walk-behind pallet lift with 1000 lb. capacity, s/n: 335431

PRESTO PST 1127-50 pallet mover with 1500 lb. capacity, s/n: 72215



GRIEVE EBS-350 electric oven



DUBOIS MACHINE CO SB-24 panel sander



EW BLISS C-45 gap frame OBI punch press



LJ PRESS mechanical OBI press



ADVANTAGE NC 10A-42-SB air cooled chiller



TORIT VS 1200 dust collector

FACTORY SUPPORT EQUIPMENT

BLACK BROTHERS MODEL 22D500CTR 24" glue spreader, s/n: 330301

TORIT VS 1200 dust collector, s/n: IG358291

STERLCO M2B9026J1 2 zone hot oil heater, s/n: 9K5442

STERLCO 9016-J1 single zone hot oil heater, s/n: 9615566

ADVANTAGE NC 10A-42-SB air cooled chiller with 20 deg. - 60 deg. F temperature range, s/n: 7032

MAYER THERMAL CARE TCOA 1004 air cooled portable chiller, s/n: CO20415

KAYNESS granulator with 3"x5" throat, 1.75 KW, s/n: 20V9503-1

BRUCKNER multi-zone gas fired oven with 32" wide capacity, top & bottom burners, overall oven length 65', 10' cooling zone, control cabinets, s/n: n/a

GRUENBERG C45HX7601 2 door industrial oven approx. 5'W X 6'H X 32"D with stainless steel trays, s/n: 68645

EMPIRE ECONO FINISH blast cabinet approx. 25" X 35" X 30" with dust-off gun, s/n: n/a

CONVENTIONAL MACHINE TOOLS

LJ PRESS mechanical OBI press with 50 ton capacity, 36"x24" platen, s/n: 50105

EW BLISS C-45 gap frame OBI punch press with 45 ton capacity, 29"x17" bed, infeed conveyor and fife guide, s/n: H67520

STEWART BOLLING & CO MODEL 5405 2 roll mill with approx. 8"x14" capacity, MANZEL lubricator, 15 HP VFD and transformer, s/n: n/a

THROPP 2 roll mill with 6"x12" capacity, steam heated rolls, s/n: T2568

ROCKWELL double end pedestal grinder, s/n: A38026140187

DELTA MILWAUKEE ½ HP floor type drill press

WALKER TURNER MODEL 65-250 bench-type radial arm drill

DUBOIS MACHINE CO SB-24 panel sander with approx. 24" capacity, s/n: 4003

GRIZZLY (2012) G0453PX planer with 3 HP, s/n: GPX15-1148



2012
GRIZZLY G0453PX planer



ROLAND SOLJET PRO XC-540 colour printer/plotter



MULTI CLEAR UV22 walk-behind electric floor sweeper



Portable die cart



Bench type drill press



Flammable proof cabinet



Shot blast cabinet

ALSO FEATURING: PRODEX HENSCHEL 50JSS 50/25 HP high intensity mixer with air actuated discharge; EW BLISS C-45 45 ton gap frame OBI punch press; BRUCKNER gas fired oven with 32"x65" opening & 10' cooling zone; (2) CERAMIC COATING COMPANY CR68H 650 deg. max. temperature glass lined reactor with agitator; (2) Stainless Steel jacketed reactors approx. 14" X 22" OD with agitator; (5) HOTPACK electric ovens; WABASH Model 100-1818-2TSTM 100 ton upacting 4 post lab press; EMPIRE ECONO FINISH blast cabinet approx. 25" X 35" X 30"; (2) HAMILTON-FISHER fume hoods and MUCH MORE!

THIS IS A PARTIAL LISTING ONLY! FOR FURTHER INFORMATION, PLEASE VISIT WWW.CORPASSETS.COM

AUCTION DETAILS

LIVE WEBCAST ONLY

INSPECTION

BY APPOINTMENT ONLY. Please email info@corpassets.com to arrange a date and time.

REMOVAL

All assets must be removed no later than Tuesday, September 22 by appointment only.

TERMS

Corporate Assets Inc. assumes no liability for errors or omissions in this brochure. Corporate Assets Inc. expressly reserves the right to determine the manner of conducting the auction as it may deem appropriate. All subject to prior sale.

PAYMENT

A Buyer's Premium will apply at this sale. International & online bidders may need a refundable deposit to bid. SALE WILL BE CONDUCTED IN USD. Please refer to our website at www.corpassets.com or call 416.962.9600 for further information. Pour les services en français, composez le 1.855.583.5551

We Accept



Please visit our website as specific terms and conditions may apply.

BID ONLINE AT: BidSpotter.com

SALE HELD PROUDLY IN CONJUNCTION WITH:



www.perryvidex.com

SURPLUS EQUIPMENT?
TURN IDLE ASSETS INTO CASH!

CONTACT US TODAY TO LEARN MORE! 416.962.9600

SUBSCRIBE TO OUR NEWSLETTER AND GET THE LATEST AUCTION UPDATES
CORPORATE ASSETS INC.
corpassets.com/newsletter-signup

AFFILIATIONS



©2020 CORPORATE ASSETS INC. ALL RIGHTS RESERVED.