

**CORPORATE
ASSETS INC**

PUBLIC AUCTION

Surplus Assets of
NS TECHNOLOGIES GROUP INC.



MAJOR 2 PLANT SALE!
LATE MODEL PLASTIC INJECTION MOLDING FACILITIES

DATE

TIME

LOCATION

Thursday, July 12, 2012

10:30 A.M. EDT

114 Industrial Drive
Whitby, Ontario L1N 5Z9

"Let Our Experience Be Your #1 Asset"™

BID, BUY & GO!™
LIVE WEBCAST

NISSEI FV9200-600L, 946 TON HORIZONTAL INJECTION MOLDING MACHINE



NISSEI FV9200-600L, 946 ton horizontal injection molding machine



YUSHIN RAII-800 robot loader (on NISSEI FV9200)



MUCELL upgrade with SIEMENS PLC (on NISSEI FV9200)



HORIZONTAL INJECTION MOLDING MACHINE

NISSEI (2005) FV9200-600L horizontal injection molding machine with NISSEI NC 9300T control, 946 ton cap., 52.3" x 52.3" between tie bars, 88.9" max daylight, 20" min. daylight, 201 oz. shot, MuCell® microcellular process technology modular upgrade with SIEMENS touch screen PLC, GAMMAFLUX GLC2K 12 zone temperature controller s/n 92Z004

ROBOT

YUSHIN (2004) RAII 800 SL robot loader s/n 32595901

**50+ HORIZONTAL AND VERTICAL INJECTION MOLDING MACHINES FROM 60 - 1000 TONS CAPACITY.
AS NEW AS 2005 WITH THERMOLATORS, HOPPERS AND DRYERS.**

This brochure is only a partial listing. PLEASE VISIT OUR WEBSITE

ENGEL VERTICAL INJECTION MOLDING MACHINES

1999



300 TON

1995



150 TON

ENGEL ES1300H/300VRB vertical rotary injection molding machine

ENGEL ES600/150 vertical injection molding machine (located at Bolton Facility)



1995



1991

125 TON

ENGEL ES600/125 vertical rotary injection molding machine

ENGEL ES600/125VHRO vertical rotary injection molding machine (located at Bolton Facility)

VERTICAL INJECTION MOLDING MACHINES

ENGEL (1999) ES1300H/300VRB vertical rotary injection molding machine with 300 ton cap., 62" rotary table, 7.5"-14.5" nozzle adjustment, 39.4" x 24.4" platen, 31.5" max daylight, 11.8" min. daylight, 23.8 oz. shot, 55mm screw, 60 hp, light curtains s/n 9557

ENGEL (1995) ES600/150 vertical injection molding machine with 150 ton cap., 46.5" rotary table, 5"-10" nozzle adjustment, 31.9" x 17.7" platen, 31.4" max daylight, 15.7" min. daylight, 10.32 oz. shot, 45mm screw, 30 hp, light curtains s/n 7153 (located at Bolton Facility)

ENGEL (1995) ES600/125 vertical rotary injection molding machine with 125 ton cap., 46.5" rotary table, 5"-10" nozzle adjustment, 31.9" x 17.7" platen, 31.4" max daylight, 15.7" min. daylight, 10.32 oz. shot, 45mm screw, 30 hp, light curtains s/n 7156

ENGEL (1994) ES600/125 vertical rotary injection molding machine with 125 ton cap., 46.5" rotary table, 5"-10" nozzle adjustment, 31.9" x 17.7" platen, 31.4" max daylight, 15.7" min. daylight, 10.32 oz. shot, 45mm screw, 30 hp, light curtains s/n 6241

ENGEL (1991) ES600/125VHRO vertical injection molding machine with 125 ton cap., 46.5" rotary table, 5"-10" nozzle adjustment, 31.9" x 17.7" platen, 31.4" max daylight, 15.7" min. daylight, 10.32 oz. shot, 45mm screw, 30 hp, light curtains s/n 5031 (located at Bolton Facility)

THINKING OF HAVING AN AUCTION? CONTACT CORPORATE ASSETS INC.
TO SCHEDULE YOUR SALE OR TO SELL YOUR SURPLUS EQUIPMENT.
ALL ENQUIRIES ARE HELD IN STRICT CONFIDENCE.

FOR MORE DETAILED LISTINGS AND PHOTOS. www.corpassets.com

LATE MODEL HORIZONTAL INJECTION MOLDING MACHINES

2004

500 TON



ENGEL TG2550/500US, 500 ton horizontal injection molding machine

2003



2 AVAILABLE

715 TON

TOSHIBA ISGT 720W V21-81B, 715 ton horizontal injection molding machine

HORIZONTAL INJECTION MOLDING MACHINES

ENGEL (2004) TG2550/500US horizontal injection molding machine with 500 ton cap., 34.6" x 33.07" between tie bars, 61.5" max daylight, 11.81" min. daylight, 57.1 oz. shot, 85mm screw, 75hp s/n 71652

TOSHIBA (2003) ISGT 720W V21-81B horizontal injection molding machine with INJECTVISOR V21 control, 715 ton cap., 37.7" x 37.7" between tie bars, 70.8" max daylight, 17.7" min. daylight, 183.4 oz. shot, 120mm screw, (2) 60hp motors s/n 358301

INSPECTION DAY IS WEDNESDAY, JULY 11 FROM 9:00 A.M. TO 5:00 P.M. AT THE FOLLOWING 2 LOCATIONS:

40 SIMPSON ROAD
BOLTON, ONTARIO, CANADA L7E 1Y4

114 INDUSTRIAL DRIVE,
WHITBY, ONTARIO, CANADA L1N 5Z9

TO SCHEDULE AN AUCTION CONTACT 416.962.9600

LATE MODEL TOSHIBA HORIZONTAL INJECTION MOLDING MACHINES

2002



ALL ELECTRIC

TOSHIBA EC65V21-1.5 65 ton horizontal injection molding machine

2005



250 TON

HORIZONTAL INJECTION MOLDING MACHINES

TOSHIBA (2003) ISGT 720W V21-81B horizontal injection molding machine with INJECTVISOR V21 control, 715 ton cap., 37.7" x 37.7" between tie bars, 70.8" max daylight, 17.7" min. daylight, 183.4 oz. shot, 120mm screw, (2) 60hp motors s/n 358401

TOSHIBA (2005) ISG250N-10Y horizontal injection molding machine with INJECTVISOR V21 control, 250 ton cap., 24" x 22" between tie bars, 41.7" max daylight, 7.7" min. daylight, 12.9 oz. shot, 45mm screw, 50 s/n 5A4702

TOSHIBA (2002) EC65V21-1.5 ALL ELECTRIC horizontal injection molding machine with V21 control, 65 ton cap., 13.8" x 13.8" between tie bars, 26" max daylight, 5.9" min. daylight, 2.9 oz. shot, 32mm screw s/n 242907

ENGEL (1994) ES1300/300 horizontal injection molding machine with EC100 control, 300 ton cap., 25.1" x 25.1" between tie bars, 47.6" max daylight, 7.87" min. daylight, 23.8 oz. shot, 60mm screw, 60hp s/n 6578

ENGEL ES1300/300 horizontal injection molding machine with EC88 control, 300 ton cap., 25.1" x 25.1" between tie bars, 47.6" max daylight, 7.87" min. daylight, 23.3 oz. shot, 55mm screw, 50hp s/n 3418

THIS SALE WILL BE CONDUCTED IN CAD FUNDS

TOSHIBA ISG250N-10Y 250 ton horizontal injection molding machine

CONTACT 416.962.9600 TO CONSIGN EQUIPMENT AT AN UPCOMING AUCTION

ENGEL HORIZONTAL INJECTION MOLDING MACHINES



ENGEL ES1300/300, 300 ton horizontal injection molding machine



ENGEL ES1300/300, 300 ton horizontal injection molding machine

HORIZONTAL INJECTION MOLDING MACHINES

ENGEL (1998) ES1300/300 horizontal injection molding machine with CC100 control, 300 ton cap., 25.1" x 25.1" between tie bars, 47.6" max daylight, 7.87" min. daylight, 33.1 oz. shot, 70mm screw, 50hp s/n 8720

ENGEL (1997) ES1300/300 horizontal injection molding machine with CC90 control, 300 ton cap., 25.1" x 25.1" between tie bars, 47.6" max daylight, 7.87" min. daylight, 20.05 oz. shot, 55mm screw, 50hp s/n 8373

This brochure is only a partial listing. PLEASE VISIT OUR WEBSITE

ENGEL HORIZONTAL INJECTION MOLDING MACHINES

2 AVAILABLE

1995



ENGEL ES700/200, 200 ton horizontal injection molding machine

1999



150 TON

ENGEL ES650/150, 150 ton horizontal injection molding machine

HORIZONTAL INJECTION MOLDING MACHINES

ENGEL (1995) ES700/200 horizontal injection molding machine with CC90 control, 200 ton cap., 21.3" x 18.1" between tie bars, 40.2" max daylight, 5.91" min. daylight, 8.2 oz. shot, 40mm screw, 40 hp s/n 6791

ENGEL (1995) ES700/200 horizontal injection molding machine with 200 ton cap., 18.1" x 18.1" between tie bars, 40.2" max daylight, 5.91" min. daylight, 15.4 oz. shot, 55mm screw, 40 hp s/n 6688

ENGEL (1999) ES650/150 horizontal injection molding machine with 150 ton cap., 19.5" x 16.5" between tie bars, 35.43" max daylight, 5.91" min. daylight, 12.47 oz. shot, 50mm screw, 30 hp s/n 9548

FOR MORE DETAILED LISTINGS AND PHOTOS. www.corpassets.com

ENGEL HORIZONTAL INJECTION MOLDING MACHINES



6 AVAILABLE

ENGEL ES600/150 horizontal injection molding machine



2 AVAILABLE

ENGEL ES330/100 horizontal injection molding machine



1995

2 AVAILABLE

ENGEL ES300/90 horizontal injection molding machine



2 AVAILABLE

ENGEL ES330/85 horizontal injection molding machine (located at Bolton Facility)

HORIZONTAL INJECTION MOLDING MACHINES

ENGEL (1991) ES600/150 horizontal injection molding machine with 150 ton cap., 19.5" x 16.5" between tie bars, 35.43" max daylight, 5.91" min. daylight, 12.47 oz. shot, 50mm screw, 30 hp s/n 5092 (located at Bolton Facility)

ENGEL (1991) ES600/150 horizontal injection molding machine with 150 ton cap., 19.5" x 16.5" between tie bars, 35.43" max daylight, 5.91" min. daylight, 12.47 oz. shot, 50mm screw, 30 hp s/n 5071 (located at Bolton Facility)

ENGEL (1991) ES600/150 horizontal injection molding machine with 150 ton cap., 19.5" x 16.5" between tie bars, 35.43" max daylight, 5.91" min. daylight, 12.47 oz. shot, 50mm screw, 30 hp s/n 3763 (located at Bolton Facility)

ENGEL ES600/150 horizontal injection molding machine with 150 ton cap., 19.5" x 16.5" between tie bars, 35.43" max daylight, 5.91" min. daylight, 12.47 oz. shot, 50mm screw, 30 hp s/n 3508 (located at Bolton Facility)

ENGEL ES600/150 horizontal injection molding machine with 150 ton cap., 19.5" x 16.5" between tie bars, 35.43" max daylight, 5.91" min. daylight, 12.47 oz. shot, 50mm screw, 30 hp s/n 3450 (located at Bolton Facility)

ENGEL ES600/150 horizontal injection molding machine with 150 ton cap., 19.5" x 16.5" between tie bars, 35.43" max daylight, 5.91" min. daylight, 12.47 oz. shot, 50mm screw, 30 hp s/n 3509 (located at Bolton Facility)

ENGEL (1996) ES330/100 horizontal injection molding machine with 100 ton cap., 18" x 20" between tie bars, 13.8" max daylight, 7.1" min. daylight, 6.5 oz. shot, 40mm screw, 20hp s/n 7239

ENGEL (1991) ES330/100 horizontal injection molding machine with 100 ton cap., 18" x 20" between tie bars, 13.8" max daylight, 7.1" min. daylight, 6.5 oz. shot, 40mm screw, 20hp s/n 4097 (located at Bolton Facility)

ENGEL (1995) ES300/90 horizontal injection molding machine with CC90 control, 90 ton cap., 17" x 19" between tie bars, 27.6" max daylight, 9.84" min. daylight, 5 oz. shot, 40mm screw, 20 hp s/n 26229

ENGEL (1994) ES300/90 horizontal injection molding machine with EC88 control, 90 ton cap., 17" x 19" between tie bars, 27.6" max daylight, 9.84" min. daylight, 5 oz. shot, 45mm screw, 20 hp s/n 24852

ENGEL (1991) ES330/85 horizontal injection molding machine with 85 ton cap., 18" x 20" between tie bars, 13.8" max daylight, 7.1" min. daylight, 6.5 oz. shot, 40mm screw, 20hp s/n 5027 (located at Bolton Facility)

ENGEL (1991) ES330/85 horizontal injection molding machine with 85 ton cap., 18" x 20" between tie bars, 13.8" max daylight, 7.1" min. daylight, 6.5 oz. shot, 40mm screw, 20hp s/n 5028 (located at Bolton Facility)

ENGEL (1996) ES200/60 horizontal injection molding machine with EC88 control, 60 ton cap., 14" x 15" between tie bars, 20" max daylight, 7.8" min. daylight, 3.2 oz. shot, 30mm screw, 20hp s/n 7783

ENGEL (1996) ES200/60 horizontal injection molding machine with EC88 control, 60 ton cap., 14" x 15" between tie bars, 20" max daylight, 7.8" min. daylight, 3.2 oz. shot, 30mm screw, 20 hp s/n 7304

ENGEL (1996) ES200/60 horizontal injection molding machine with EC100 control, 60 ton cap., 25.6" x 16.9" between tie bars, 20" max daylight, 7.8" min. daylight, 3.2 oz. shot, 30mm screw, 20hp s/n 7799

ENGEL (1995) ES200/60 horizontal injection molding machine with EC88 control, 60 ton cap., 25.6" x 16.9" between tie bars, 20" max daylight, 7.8" min. daylight, 3.2 oz. shot, 30mm screw, 20hp s/n 7172 (located at Bolton Facility)

ENGEL (1994) ES200/60 horizontal injection molding machine with EC88 control, 60 ton cap., 25.6" x 16.9" between tie bars, 20" max daylight, 7.8" min. daylight, 3.2 oz. shot, 30mm screw, 20hp s/n 26514 (located at Bolton Facility)

PROXY BIDDING

If you are unable to attend this auction, we would be pleased to act as your proxy.

Please contact our office at (416) 962-9600 or visit our website for a proxy bid form, terms and additional information.

www.corpassets.com

CONTACT 416.962.9600 TO CONSIGN EQUIPMENT AT AN UPCOMING AUCTION

ALL EQUIPMENT WELL MAINTAINED AND LATE MODEL



KAWAGUCHI KX180 horizontal injection molding machine



KAWAGUCHI KM140B2 horizontal injection molding machine



ENGEL ES200/60 horizontal injection molding machine



NISSEI DC200/300 horizontal injection molding machine



VENTAX robot



WITTMANN robot

HORIZONTAL INJECTION MOLDING MACHINES

KAWAGUCHI (2000) KX180 horizontal injection molding machine with 198 ton cap., 22" x 22" between tie bars, 26.3" max daylight, 7.8" min. daylight, 12.1 oz. shot, 50mm screw, 30hp s/n LA-MM1522

KAWAGUCHI (1999) KM140B2 horizontal injection molding machine with 154 ton cap., 18.1" x 18.1" between tie bars, 17.7" max daylight, 7.9" min. daylight, 16.4 oz. shot, 45mm screw, 25hp s/n JG-Y21530

NISSEI DC200/300 horizontal twin shot injection molding machine with 300 ton cap., 13.75 oz shot, s/n D852141 (**located at Bolton Facility**)

ROBOTS

(2) **WITTMANN** (2006) W743C robot loaders with travels: X:1200mm, Y:2000mm, Z: 4000mm s/n 5108, 5109

(2) **WITTMANN** (2005) W621 robot loader with travels: X: 550mm, Y:1200mm, Z:2500mm s/n 5404, 5124

YUSHIN (2008) HOP-Five-750XC robot loader s/n 3509449001

YUSHIN (2005) RAI1 400 SLL robot loader s/n 33248901

ENGEL (2005) ERC 33/1-EH robot loader s/n 74738

ENGEL (2004) ERC 73/1-C robot loader s/n 74554

ENGEL (1996) ERC 83/1P-B robot loader s/n 7052/083/96

ASG AUTOMATION (1999) s/n 99006

TO SCHEDULE AN AUCTION CONTACT 416.962.9600

SUMITOMO HORIZONTAL INJECTION MOLDING MACHINES



SUMITOMO SH 280-60 horizontal injection molding machine



SUMITOMO SH 160-C horizontal injection molding machine



SUMITOMO SH 100-C horizontal injection molding machine



SUMITOMO SH 80M horizontal injection molding machine

HORIZONTAL INJECTION MOLDING MACHINES

SUMITOMO (1998) SH 280-60 horizontal injection molding machine with 300 ton cap., 27" x 25" between tie bars, 47.2" max daylight, 11.7" min. daylight, 32.9 oz. shot, 71mm screw, 60hp s/n MOCQ0017

SUMITOMO (1998) SH 160-C horizontal injection molding machine with 175 ton cap., 22.1" x 20.1" between tie bars, 36.6" max daylight, 7.8" min. daylight, 10.5 oz. shot, 50mm screw, 40hp s/n MOCLO017

SUMITOMO (1998) SH 100-C horizontal injection molding machine with 100 ton cap., 18.1" x 16.1" between tie bars, 29.9" max daylight, 7.8" min. daylight, 6.7 oz. shot, 40mm screw, 25hp s/n MOCG0026

SUMITOMO (1998) SH 80M horizontal injection molding machine with 90 ton cap., 14.8" x 14.8" between tie bars, 27.9" max daylight, 6.3" min. daylight, 4.9 oz. shot, 36mm screw, 20hp s/n MOCF0179

This brochure is only a partial listing. PLEASE VISIT OUR WEBSITE

CRANES, CLEAN ROOM ENCLOSURES, COOLING SYSTEMS & RACKING



35 FT SPAN

KONECRANES 5 ton single girder bridge crane



200 FT RUNWAYS

KONECRANES 5 ton single girder bridge crane



30 FT SPAN

KONECRANES 2 ton single girder bridge crane



4 AVAILABLE

ESC portable clean room enclosures



200+ SECTIONS

Partial view of pallet racking available



1998

MOULD TEMP cooling systems



1998

MOULD TEMP cooling systems



1998

MOULD TEMP cooling systems



BERG skid mounted chiller

OVERHEAD BRIDGE CRANES

KONECRANES 5 ton single girder bridge crane with 35ft span, top running bridge with KONE XL300ST 5 ton underslung hoist, pendant control, 201 ft of bussbar, I-beam, top running rail, pendant control s/n 8243 (located at Bolton Facility)

KONECRANES 5 ton single girder bridge crane with 35ft span, top running bridge with KONE XL300ST 5 ton underslung hoist, pendant control, 201 ft of bussbar, I-beam, top running rail, pendant control s/n 8244 (located at Bolton Facility)

KONECRANES 2 ton single girder bridge crane with 30ft span, underslung bridge with KONE 2 ton underslung hoist, pendant control, 201 ft of bussbar, I-beam, top running rail, pendant control s/n na (located at Bolton Facility)

PORTABLE CLEAN ROOM ENCLOSURES

(4) ENVIRONMENTAL SYSTEMS CORPORATION portable free standing clean room enclosures approved to medical standards complete with ventilation, lighting, windows, unit 1 - 131"W x 138"L x 157"H, unit 2- 120"W x 138"L x 118"H, unit 3- 111"W x 138"L x 157"H, unit 4- 102"W x 138"L x 157"H

COOLING EQUIPMENT

(3) MOULD TEMP (1998) cooling systems s/n 05-001, 05-002, 02-006 (located at Bolton Facility)

BERG AS-40-1-2P 40 ton chiller with 90 HP drive, s/n W01112A-AD1-0403 (located at Bolton Facility)

**THINKING OF HAVING A SALE?
CONTACT CORPORATE ASSETS INC.**

GRANULATORS, DRYERS AND TEMPERATURE CONTROLLERS



Partial view of granulators available



Partial view of granulators available



View of **RAPID** granulator



Partial view of granulators available



Partial view of **GAMMAFLUX & SENTRA** controllers



Partial view of temperature controllers available



Partial view of dryers available



THORESON
TECH 3 dryer



Partial view of dryers available



Partial view of dryers available



Partial view of conveyors available



Partial view of conveyors available

GRANULATORS

FOREMOST SHDC6 25HP granulator with 18"Wx14" opening, s/n 22720

ROTOGRAN W0-1424-SP 25HP granulator with 24"Wx14" opening, s/n MT1424SP0507116W0

ROTOGRAN W0-1416-SP-T8 25HP granulator with 18"x18" opening, s/n MT1416SPT80507174W0

(5) **ROTOGRAN** PH1214-SP 15HP granulator with 14"Wx12" opening, s/n MT1214SP9903206, MT1214SP0212300, MT1214SP9903203, MT1214SP009243-A, MT1214SP9905214

(11) **ROTOGRAN** PH1012-SP 10HP granulator with 12"Wx10" opening, s/n MT1012SP0006376, MT1012SP9702247, MT1012SP9312340, MT1012SP0210415, MT1012SP0210414, MT1012SP0111405, MT1012SP9705275, MT1012SP0104395, MT1012SP0006377

(7) **ROTOGRAN** PH1012 7.5HP granulator with 12"Wx10" opening, s/n MT10129591169, MT10129403127, MT101204C3126, MT10129312114, MT10129505184

(3) **NELMOR** G1012FX 10HP granulator with 12"Wx20" opening, s/n 99C02533, 99C02535, 99002539

POLYMER 912SP 7.5HP granulator with 12"Wx10" opening, s/n 912SP7767.8

MOSSBERG 810E granulator with 10"Wx5" opening, s/n 1337-W

RE-MAX 5200 15HP granulator with 14"Wx12" opening, s/n 3200

RE-MAX 4400 10HP granulator with 10"Wx12" opening, s/n 2600

TRI A DI ANCESCHI 46-25TD 10HP granulator with 18"Wx12" opening, s/n 33 1348 88

(2) **FOREMOST** granulators with 9"Wx10" opening

CONAIR MARTIN JC-3 granulator with 5"Wx7" opening, s/n R6980

NELMOR 5HP granulator with 9"Wx7" opening

NELMOR MV810 5HP granulator with 10"x10" opening, s/n C250534

POLYMER 68SPL 5.6HP granulator with 8"Wx9" opening, s/n 3000878

CUMBERLAND granulator with 20"Wx18" opening, s/n 3350000-94501

RAPID SOLO 814 7.5HP granulator with 11"Wx14" opening, s/n 73437.003

RAPID SOLO 814 7.5HP granulator with 11"Wx14" opening, s/n 69101.001

CONTACT 416.962.9600 TO CONSIGN EQUIPMENT AT AN UPCOMING AUCTION

WIRE PROCESSING, ULTRASONIC WELDERS, AND COOLING TOWERS



1997

ARTOS wire cutting and stripping machine



BRANSON ultrasonic welder



DUKANE ultrasonic welder



KENCO wire crimper



VSI TM66 indexing and insertion cell



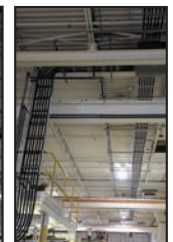
Partial view of ultrasonic welders available



Partial view of copper buss available



Partial view of copper wire available



Partial view of copper wire



Partial view of cooling towers available

COPPER WIRE

Approx 4,000 ft of copper electrical wire runs throughout the facility (located at Bolton Facility)

3 WAYS TO BID!

1. ATTEND! 2. BID ONLINE! 3. BID BY PROXY!

ONLINE WEBCAST BIDDING

powered by

BID, BUY & GO!™
LIVE WEBCAST

Register early for this and other online webcast auctions!

WIRE PROCESSING

ARTOS (1997) single conductor, round cable wire cutting and stripping machine with feeder s/n 51691-001

(2) KENCO 9703K-29 wire crimpers s/n 5456, 5455

KENCO 3K-7-150 wire crimper s/n S43557

VSI TM66 indexing and insertion cell s/n 21576

COOLING TOWERS

PRIMUS (2005) cooling tower with 28x61 belt s/n P1306

BAC FXT88 cooling tower s/n 87800303

BAC FXT-74 cooling tower s/n 83-0088

TO SCHEDULE AN AUCTION CONTACT 416.962.9600

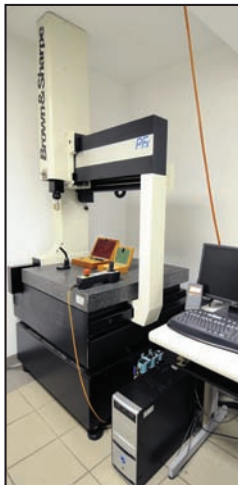
INSPECTION DEPARTMENT & FACTORY EQUIPMENT AVAILABLE



2006

2000 HOURS

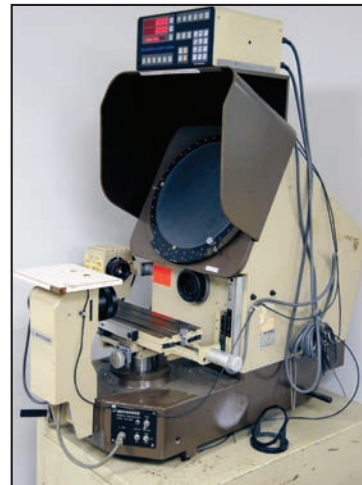
ATLAS COPCO GA 45+ air compressor



BROWN & SHARPE CMM



INSTRON tensile tester



MITUTOYO optical comparator



STARRETT HB350 optical comparator



RAM OPTICAL video probe s/n 11/2000/3



Partial view of test equipment

AIR COMPRESSORS

ATLAS COPCO (2006) GA45+ 60HP air compressor, 2,002 hrs, s/n AP1508665 **(located at Bolton Facility)**

ATLAS COPCO (2006) FX13 air dryer s/n na

ATLAS COPCO (2006) FX13 air dryer s/n CAX006801 **(located at Bolton Facility)**

ATLAS COPCO(1999) GA30 40HP air compressor, s/n AII 360831

COMPAIR 88PUAS 20HP rotary screw air compressor 9,589 hrs, s/n C19A8313D000453

COMPAIR HYDROVANE 218-CK408 50HP air compressor s/n 2180020510308

COMPAIR HYDROVANE 68 15HP air compressor



Partial view of test equipment available



Partial view of test equipment available

INSPECTION & TEST EQUIPMENT

STARRETT HB350 optical comparator with QUADRA-CHEK 200 control, 15.5" screen s/n 20370

MITUTOYO PH-350 optical comparator with 14" dia. screen, s/n 50012 **(located at Bolton Facility)**

B&S PFX CMM with RENISHAW PH10MQ probe, 27"x33" granite table, computer s/n 0398-3221

RAM OPTICAL video probe s/n 11/2000/3

A&D MS-70 moisture analyzer s/n P1007469

COMPUTRAC MAX-2000 moisture analyzer s/n 26585

DYNISCO POLYMER D4002 test unit s/n 320603052838

CRYO-FRIG C-390 DNE laboratory freezer s/n ZU28684

PRECISION SCIENTIFIC laboratory oven s/n 10RS/10

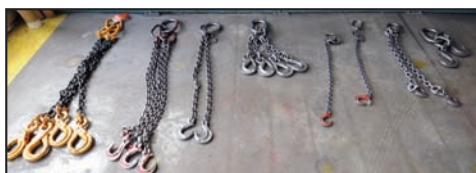
MITUTOYO GRAPLATE granite surface plate, 36"x60"x10"D



Partial view of test equipment available



ATLAS COPCO FX13 air dryer



Partial view of lifting chains available



Partial view of eye bolts available

RIGGING INFORMATION

Machinery Movers, Rigging Companies, Packaging and Crating Companies, and Export Documentation Services will be available onsite for your convenience.

Or visit www.corpassets.com for further details.

This brochure is only a partial listing. PLEASE VISIT OUR WEBSITE

WELL MAINTAINED MACHINING EQUIPMENT AVAILABLE



SURE FIRST EDM



BRIDGEPORT mill



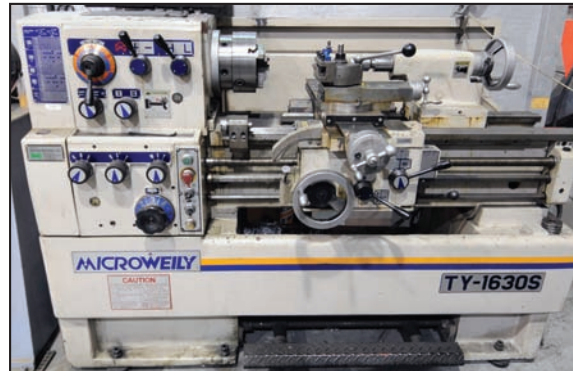
CHEVALIER surface grinders



VERTICUT roll in bandsaw



COLCHESTER tool room lathe



MICROWEILY TY-1630S lathe



MAXIMART EDM



BAXTER horizontal saw



TOYOTA forklift



Rotary pallet wrapper



View of pneumatic and manual presses



WEBCO 7.5 TON lifting hook



3 ton rolling gantry

MACHINE SHOP EQUIPMENT

MICROWEILY (2002) TY1630S lathe with 16" swing x 30" between centers, 8" 3 jaw chuck, 2.25" spindle bore, 2,000 RPM, s/n A9107-009

BRIDGEPORT vertical mill with DRO, 2HP, s/n J280276

CHEVALIER FSG-618M surface grinders with 6"X18" magnetic chuck, s/n A3849011

COLCHESTER CHIPMASTER 600 lathe with 11" swing x 20" centers, 5" 3 jaw chuck, 1.5" spindle bore, 3000RPM

MAXIMART ram type EDM with M series 60A control, DRO, 24"x44"x16"D tank

(2) **SURE FIRST** (1998) ED-252 sinker type EDM with ED BIPULSE control, 2 axis DRO, 30"x20"x12"D tank s/n 32226, 32224

VERTICUT 114-A vertical bandsaw with 10" throat, s/n 1481

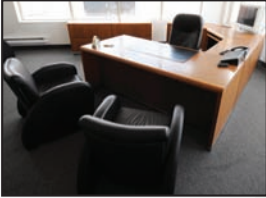
FACTORY SUPPORT EQUIPMENT

(248) sections of adjustable pallet racking (18ft uprights, 8ft crossrails), (54) various hopper/dryers, (48) various thermolators, blending equipment, forklifts, inspection equipment, tool grinders, work benches, welders, ultrasonic welders, work benches, fireproof storage cabinets, grinders, label printers, executive office furniture, digital floor and table scales (10) rolling ladders, forklift man cages, electric die carts, pallet wrapper, and more.

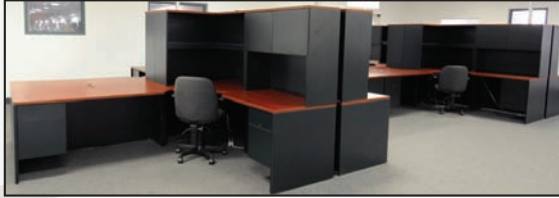
HAVE A LEAD ON A NEW DEAL?
CORPORATE ASSETS INC. PAYS GREAT FINDER'S FEE!
CONTACT US AT 416.962.9600

FOR MORE DETAILED LISTINGS AND PHOTOS. www.corpassets.com

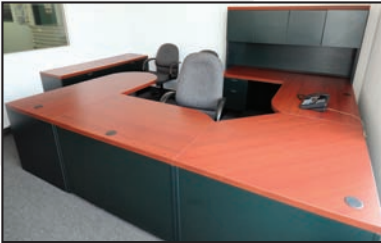
LRG QTY OF EXECUTIVE OFFICE FURNITURE AVAILABLE (BOLTON FACILITY)



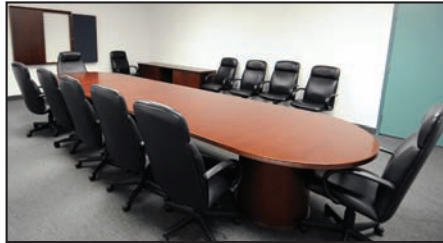
Partial view of executive office furniture available



Partial view of executive office furniture available



Partial view of executive office furniture available



Partial view of executive office furniture available



Partial view of executive office furniture available



Partial view of executive office furniture available



PLAN HOLD blue print cabinets



XEROX 3030 wide format copier



HP plotter



Fire proof cabinet



DATAWARE CD/DVD duplicators (brand new)

DVD DUPLICATORS

(507) **DATAWARE CRUISER** CD/DVD fully automatic duplicator and backup systems with 100 disc hands free duplicating (new in the box, located at Bolton Facility)

OFFICE FURNITURE & BUSINESS MACHINES

High end executive furniture including desks (**located at Bolton Facility**), chairs, filing cabinets, work stations, computers, blue print copiers and cabinets and more.

LIVE ONSITE AND
ONLINE AUCTION VIA:



AUCTION DETAILS

Surplus Assets of NS TECHNOLOGIES GROUP INC.

INSPECTION

Wednesday, July 11, 2012 from 9:00 A.M. to 5:00 P.M. and morning of auction to start of auction

REMOVAL

Small items: Friday, July 13, 2012 by 5:00 P.M.
Remaining items: Thursday, July 26, 2012 by 5:00 P.M.

DIRECTIONS

Visit our website at www.corpassets.com, click on Upcoming Auctions: **Surplus Assets of NS TECHNOLOGIES GROUP INC.** button, click on Map tab and get directions by accessing the pop up address info box.

ACCOMMODATIONS & CAR RENTALS

Please visit our website for details at www.corpassets.com

PAYMENT

Please visit our website for details at www.corpassets.com
A Buyer's Premium will apply at this sale.



We
Accept

Please visit our website as specific terms and conditions may apply.

TERMS

Corporate Assets Inc. assumes no liability for errors or omissions in this brochure. Corporate Assets Inc. expressly reserves the right to determine the manner of conducting the auction as it may deem appropriate. All subject to prior sale.

APPRAISAL SERVICES

What's the real value of your equipment? If you require a detailed appraisal for banking, insurance, or internal purposes, consult with the certified experts at Corporate Assets Valuations. We provide appraisal services anywhere in the world for all types of industrial manufacturing and processing equipment.

- We will appraise one machine or your complete plant
- Going Concern, Fair Market or Liquidation Values

Call us in complete confidence today with your requirements.

Phone: (416) 962-9600

Fax: (416) 962-9601

Email: appraisals@corpassets.com

AUCTION CONDUCTED BY CORPORATE ASSETS INC.

For further information contact us at:

2 St. Clair Ave. W., Suite 1002, Toronto, ON, Canada M4V 1L5

Tel: (416) 962-9600 • Fax: (416) 962-9601

Email: info@corpassets.com • Web: www.corpassets.com

Toronto • Montreal • Chicago

All auctions are

ONSITE

&

BID, BUY & GO!
LIVE WEBCAST

UPCOMING AUCTIONS

New auctions added to our website regularly!

LIVE WEBCAST powered by

BID, BUY & GO!
LIVE WEBCAST

Surplus to the Ongoing Needs of
AVOX SYSTEMS INC.
Late Model 5 Axis High Precision CNC Aerospace Facility
Lancaster, New York, USA 14086
Tuesday, June 26, 2012
10:30 AM EDT

Surplus Assets of
EURO-TEK MACHINE LTD.
Late Model CNC Machining and Turning Facility
St. Thomas, Ontario N5P 3S3
Thursday, June 28, 2012
10:30 AM EDT

Surplus to the Ongoing Operations of
MTM AUTOMATION & AEROSPACE MFG. INC.
Late Model Precision Machining & CNC Grinding Facility
Guelph, Ontario N1K 1E8
Late August, 2012

MEMBER IN
GOOD STANDING



Printed in Canada. ©2012 CORPORATE ASSETS INC. ALL RIGHTS RESERVED.