

PUBLIC AUCTION

**CORPORATE
ASSETS INC**

FLM TECHNOLOGY INC.



**LATE MODEL & HIGH PRECISION CNC MACHINING FACILITY
VERY LOW HOURS ON ALL EQUIPMENT!**

DATE

TIME

LOCATION

Thursday, April 19, 2012

10:30 A.M. EDT

40 Malcolm Road
Guelph, Ontario N1K 1A9

"Let Our Experience Be Your #1 Asset"™

BID, BUY & GO!™
LIVE WEBCAST

LATE MODEL 4 AXIS CNC HORIZONTAL MACHINING CENTER

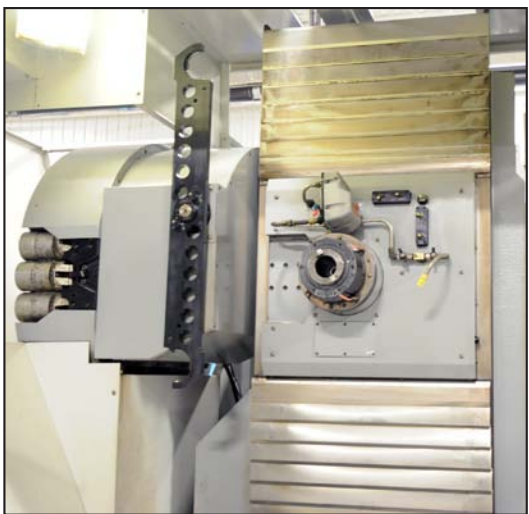
2005



FULL 4TH AXIS

5,700 HOURS

HAAS EC1600 4 axis CNC horizontal machining center



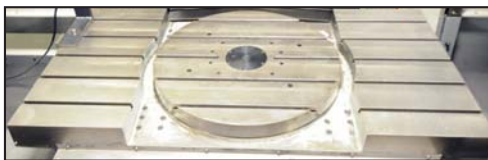
View of spindle and ATC



View of 30 station ATC



View of CNC control



View of table with 30" full B-Axis rotary table

APPRAISAL SERVICES

What's the real value of your equipment? If you require a detailed appraisal for banking, insurance, or internal purposes, consult with the certified experts at corporate assets valuations. Contact us in complete confidence today with your requirements.

APPRAISALS@CORPASSETS.COM

4 AXIS CNC HORIZONTAL MACHINING CENTER

HAAS (2005) EC1600 4 Axis CNC horizontal machining center with HAAS CNC control, 32.5" x 64" table with 30" built-in rotary, travels: X-64", Y-40", Z-32", B-AXIS .001 deg., 30HP, 2 speed gear drive, CAT 50 taper, 6,000 RPM, (30) ATC, RENISHAW tool probe, 5729 HRS S/N:51645

TO SCHEDULE AN AUCTION CONTACT 416.962.9600

LATE MODEL CNC VERTICAL MACHINING CENTERS WITH LOW HOURS



HAAS VF-4 CNC vertical machining center



HAAS VF-3 CNC vertical machining center



HAAS VF-2D CNC vertical machining center



HAAS 8.5" 4th axis attachment

CNC VERTICAL MACHINING CENTERS & 4TH AXIS

HAAS (2005) VF-2D CNC vertical machining center with HAAS CNC control, 14"x36" table, travels: X-30", Y-16", Z-20", 20HP, 15,000 RPM, (20) ATC, programmable coolant, pre-wired for 4th axis, 1281 HRS S/N:43570

HAAS (1998) VF-4 CNC vertical machining center with HAAS CNC control, 18" x 52" table, travels: X-50", Y-20", Z-25", (20) ATC, 20HP, programmable coolant, pre-wired for 4th axis, 7180 HRS S/N:14258

HAAS (1997) VF-3 CNC vertical machining center with HAAS CNC control, 18" x 48" table, travels: X-40", Y-20", Z-25", pre-wired for 4th Axis, 15HP, (20) ATC, pre-wired for 4th axis, programmable coolant, 1868 HRS S/N:10728

HAAS (1997) VF-3 CNC vertical machining center with HAAS CNC control, 18" x 48" table, travels: X-40", Y-20", Z-25", pre-wired for 4th Axis, 15HP, (20) ATC, programmable coolant, 10402 HRS S/N:10573

HAAS 4th Axis attachment with 8.5" rotary table for VF-4 (may be sold separate)

HAAS 4th Axis attachment with 6.5" rotary table for VF-3 (may be sold separate)

CONTACT CORPORATE ASSETS INC. TO SCHEDULE YOUR SALE OR TO SELL YOUR SURPLUS EQUIPMENT.
ALL ENQUIRIES ARE HELD IN STRICT CONFIDENCE.

This brochure is only a partial listing. PLEASE VISIT OUR WEBSITE

FULL 4TH AXIS



(2) 19.75" X 19.75" PALLETS

MITSUBISHI M-H50C 4 axis dual pallet CNC horizontal machining center



WHEEL DRESSER

CHEVALIER FSG-1632AD hydraulic surface grinder



FANUC CNC

TM1-52 CNC chucker



2006

MAXIMART 3VS vertical milling machine



5 HP

2 AVAILABLE

FIRST LC20VSG vertical milling machines



6,850 LBS. CAPACITY

TOYOTA LPG forklift

4 AXIS CNC HORIZONTAL MACHINING CENTER

MITSUBISHI M-H50C 4 axis dual pallet CNC horizontal machining center, with MITSUBISHI CNC control, travels: X-28.4", Y-24.8", Z-24.8", (2) 19.75" x 19.75" pallets with changer, B-AXIS .001 deg., 30 to 4,000 RPM, (40) ATC, 15 hp spindle motor, oil cooler, S/N: CH2131

MILLING MACHINES

DEVILIEG 3H-48 jig mill with 3 axis DRO, 35" x 48" table, travels: X-60", Y-24", Z-44", 3.5" spindle, 25-1200 RPM, S/N: MEC41

MAXIMART (2006) 3VS vertical milling machine with 2 axis DRO, 10" x 54" table, power feed, 4,300 rpm, 3HP s/n 016367

FIRST LC20VSG vertical milling machine with 2 Axis DRO, 10" x 50" table, power feed, 60-4,500 RPM, 5HP, S/N:G0601575

FIRST LC20VSG vertical milling machine with 2 Axis DRO, 10" x 50" table, power feed, 60-4,500 RPM, 5HP, 5HP, S/N:10601764

SURFACE GRINDER

CHEVALIER FSG-1632AD hydraulic surface grinder with 16" x 32" magnetic chuck, wheel dresser, S/N: G386C001

CNC CHUCKER

KITAGAWA TM1-52 CNC chucker with FANUC OT CNC control, 8" 3 jaw chuck, 8 station turret, 20" swing, S/N: na

Webcast powered by:



WELL MAINTAINED & HIGH PRECISION MACHINING EQUIPMENT

1999



15" X 62.26" CAPACITY

TAPER GRINDING

LIVHICA KIKINDA C12U-1600 universal cylindrical grinder



HERBERT DEVLIEG 3H-48 jig mill



1998

KIKINDA RB-40SPA radial arm drill



1997

24" X 90" CAPACITY

POTISJE ADA PA24 gap-bed engine lathe



22" X 67" CAPACITY

TOS SN50C gap bed engine lathe



17" X 60" CAPACITY

DARBERT CY-S1760G gap-bed engine lathe



HARDINGE DSM 59 precision lathe



Custom shaft wire brush machine with servo



PARLEC PARSETTER TMM-900 tool pre-setter

UNIVERSAL GRINDER

LIVHICA KIKINDA (1999) C12U-1600 universal cylindrical grinder with 15" swing, 62.25" centers, 20" x 2.5" wheel, 7" chuck, taper grinding, internal diameter grinding spindle, swivel head, 600 RPM, wheel dresser, coolant system, s/n 4321

ENGINE LATHES

TOS SN50C gap bed engine lathe with 22" swing (28" gap), 67" between centers, 2.5" spindle bore, 22-2,000 rpm, HEIDENHEIN 2 axis DRO, s/n 08005015040499

POTISJE ADA (1997) PA24 gap-bed engine lathe with 24" Swing (30" gap), 90" between centers, HEIDANHEIN 2 Axis DRO, 3.5" Spindle Bore, 2,000RPM, S/N: 14890

DARBERT CY-S1760G gap-bed engine lathe with 17" swing (28" gap), 60" between centers, 3" spindle bore, 20-2,000 rpm, 2 axis DRO, s/n 301

HARDINGE DSM-59 high precision lathe with 3,500 rpm s/n na

FACTORY SUPPORT EQUIPMENT

KIKINDA (1998) RB-40SPA radial arm drill (column type) with 40" Arm, 22"x25.5"x16D" Box Table, 25.5" Vertical Travel, 55-2558 Spindle RPM, S/N: 3014
PARLEC PARSETTER TMM-900 tool pre-setter, S/N: 139081-0397

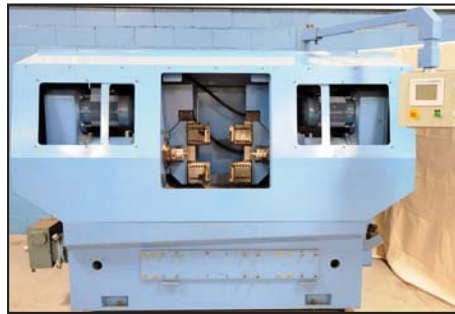
Unable to attend this auction? We would be pleased to act as your proxy. Please contact our office at (416) 962-9600 or visit our website for a proxy bid form, terms and additional information.

CONTACT 416.962.9600 TO CONSIGN EQUIPMENT AT AN UPCOMING AUCTION.

LARGE QUANTITY OF PRECISION TOOLING & EQUIPMENT AVAILABLE



MITUTOYO B311 CMM



Facing and centering machine - rebuilt by FLM



E-R MAIRER KM1012 roll-in bandsaw



GENIE GS2032 platform lift



TOMCAT floor scrubber



VORTEX piston type air compressor



MAXAIR air compressor



View of granite table and micrometers



COMPAIR air dryer



View of storage trailer



Partial view of precision tooling available



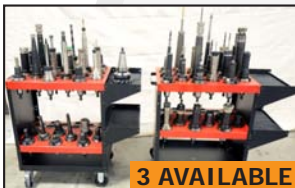
Partial view of collets and tooling available



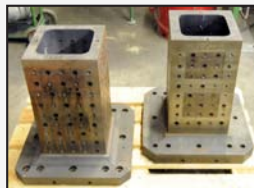
Partial view of tool holders available



Partial view of chucks and tooling available



Partial view of tool holders available



Partial view of tombstones available



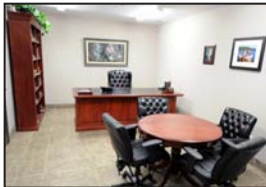
Partial view of angle plates available



View of precision tables available



Partial view of raw material available



Partial view of office furniture available



HP DESIGNJET 110 plus

CMM

MITUTOYO B311 bridge type CMM with RENISHAW MH8 probe, 82.5" x 67" x 14"D granite table, 49" between columns, 31" vertical travel, S/N:851049

FACTORY SUPPORT EQUIPMENT

TOYOTA 7FGCU35 Forklift - LPG with Side Shift, Triple Mast (199" vertical Lift), 6850Lbs Cap., 48" Forks, S/N:63368

E-R MAIER KM1012 Roll-in Bandsaw, S/N:112501

GENIE GS2032 platform lift with 800lb capacity

(2) TOMCAT 2200 battery operated floor polishers

(3) HUOT Tool Holder and Carts

MISCELLANEOUS EQUIPMENT

Angle and fixture plates, stackable bins, welders, raw material, clamps, vices, dumping hoppers, grinders, slings, work tables, tool boxes, mitre saws, CAT 50 tooling and holders, collets, grinding stones, parts bins, vacuum pumps, office furniture, computers and more!

All auctions are

ONSITE

&

BID, BUY & GO!™ LIVE WEBCAST

UPCOMING AUCTIONS

New auctions added to our website regularly!

LIVE WEBCAST powered by

BID, BUY & GO!™ LIVE WEBCAST

Surplus to the Ongoing Needs of
ALKANO LIMITED
Well Maintained Machining Facility
3097 Mainway, Burlington, Ontario L7M 1A1
Tuesday, April 24, 2012 • 10:30 A.M. EDT

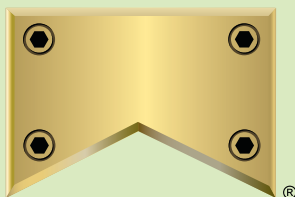
S & A INDUSTRIAL

Late Model CNC Fabricating Equipment
148 Bowes Road, Concord, Ontario L4K 1J6
Tuesday, May 8, 2012 • 10:30 A.M. EDT

MEMBER IN
GOOD STANDING



Printed in Canada. ©2012 CORPORATE ASSETS INC. ALL RIGHTS RESERVED.



CORPORATE ASSETS INC

We offer the convenience of
3 Ways To Bid!

- Bid in Person
- Bid via Webcast
- Bid by Proxy

Discover the ease of
bidding with our

LIVE WEBCAST!

This feature gives you the ability to bid live by webcast from the convenience of your telephone from anywhere in the world! Visit our website for details.

Please register a minimum of 24 hours in advance to qualify to bid.



www.corpassets.com

Live Webcast bidding powered by



AUCTION DETAILS

FLM TECHNOLOGY INC.

INSPECTION

Wednesday, April 18, 2012 from 9:00 A.M. to 5:00 P.M.
and morning of auction to start of auction.

REMOVAL

Small items: Friday, April 20, 2012 by 5:00 P.M.
Remaining items: Thursday, April 27, 2012 by 5:00 P.M.

DIRECTIONS

Visit our website at www.corpassets.com, click on Upcoming Auctions: **FLM Technology Inc.** button, click on Map tab and get directions by accessing the pop up address info box.

ACCOMMODATIONS & CAR RENTALS

Please visit our website for details at www.corpassets.com

PAYMENT

Please visit our website for details at www.corpassets.com
A Buyer's Premium will apply at this sale.



We
Accept

Please visit our website as specific terms and conditions may apply.

TERMS

Corporate Assets Inc. assumes no liability for errors or omissions in this brochure. Corporate Assets Inc. expressly reserves the right to determine the manner of conducting the auction as it may deem appropriate. All subject to prior sale.

APPRAISAL SERVICES

What's the real value of your equipment? If you require a detailed appraisal for banking, insurance, or internal purposes, consult with the certified experts at Corporate Assets Valuations. We provide appraisal services anywhere in the world for all types of industrial manufacturing and processing equipment.

- We will appraise one machine or your complete plant
- Going Concern, Fair Market or Liquidation Values

Call us in complete confidence today with your requirements.

Phone: (416) 962-9600

Fax: (416) 962-9601

Email: appraisals@corpassets.com

AUCTION CONDUCTED BY CORPORATE ASSETS INC.

For further information contact us at:
2 St. Clair Ave. W., Suite 1002

Toronto, Ontario, Canada M4V 1L5

Tel: (416) 962-9600 • Fax: (416) 962-9601

Email: info@corpassets.com

Web: www.corpassets.com

Toronto • Montreal • Chicago