

**CORPORATE ASSETS INC**

**500 LOT SALE!**

# PUBLIC AUCTION

Surplus to the Ongoing Needs of  
**CROWN METAL PACKAGING**



**EXCELLENT CONDITION**

View of **TOS SNC 40** gap bed engine lathes



**5 AVAILABLE**

**40 TON CAPACITY**

Partial view of **BERG** self-contained chillers available



**SAS SENIC** 2 axis gantry type pick and place robot



**4300 LBS CAPACITY**

**CLARK C-500-55LP** lpg forklift



**UPGRADED 12000 RPM SPINDLE**

**SCHAUDT UR1000** universal ID/OD grinder

**150,000 SQ.FT. FACILITY CLOSURE**

**DATE**

**TIME**

**LOCATION**

Tuesday, June 28, 2016

10:30 A.M. EDT

125 Irwin Street  
Chatham, Ontario, N7M 0N5

*This auction is*  
**ONSITE & ONLINE**

**CORPORATE ASSETS INC**

“Let Our Experience Be Your #1 Asset”™

www.corpassets.com • 416.962.9600 • info@corpassets.com

LIVE WEBCAST powered by

**BidSpotter.com**

# ALL ASSETS HAVE BEEN EXCEPTIONALLY WELL MAINTAINED!



EXCELLO milling machine



GROB vertical band saw



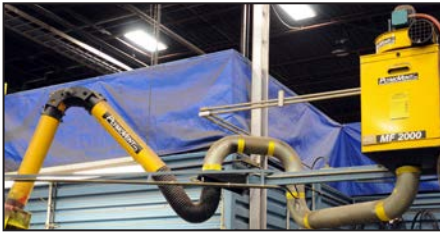
FORD SMITH 12" HD grinder



BEE belt sander



TORRIT 3 HP dust collector



PLYMOVENT MF2000 snorkel type fume extractor



MOTIVATION forklift boom attachment



CII RF712 horizontal tilt head band saw



ROTEX 18A53 bench type turret punch



6" machine vises available



Rotary indexing tables available



Magnetic base drills available



**30+ AVAILABLE**

Partial view of LISTA cabinets available



Partial view of raw material stock available



Hardness tester



Partial view of inspection equipment available

## PARTIAL VIEW OF MACHINE SHOP EQUIPMENT AVAILABLE

**TOS SN40C** gap bed engine lathe with 16" swing, 80" between centers, 2.5" bore, 10" 3 jaw chuck, speeds to 2000rpm, ACCURITE 2 axis DRO, quick tool post, in/mm threading, coolant s/n: 440200930643

**TOS SN40B** gap bed engine lathe with 16" swing, 60" between centers, 2" bore, 10" 3 jaw chuck, speeds to 2000rpm, ACCURITE 2 axis DRO, quick tool post, in/mm threading, coolant s/n: 040150790566

**TOS BPH20** hydraulic surface grinder with 18" x 8" ECLIPSE magnetic chuck, 10" wheel, incremental down feed, coolant s/n: 400822

**XCELLO** universal mill with 46" x 9" table, speeds to 3800rpm, ACCURITE 2 axis DRO, power table feed, 1.5hp s/n: 6025763

**SCHAUDT UR1000** universal ID/OD grinder with 13.75" max grinding length, 6" max grinding diameter, 40" in between centers, 14" swing, 13.75" x 2" wheel, 6 degree table swivel, 7hp, WHITNON 311 series cartridge type belt driven internal precision grinding spindle with speeds to 12,000rpm, ACCURITE DRO, full complement of spindle attachments and grinding wheels, s/n: 5114

**CONTACT 416.962.9600 TO CONSIGN EQUIPMENT AT AN UPCOMING AUCTION**



**QUINCY QSF 100-100HP** screw type air compressor



**QUINCY QSI 1250 250HP** screw type air compressor



**AIRSCREW 150HP** screw type air compressor



**TG AIR 1500A** refrigerated air dryer



**INGERSOLL RAND PAC-AIR 50** 50HP screw type air compressor



View of **BERG 15 ton** self contained chillers available



**TG AIR T-30 20HP (3)** stage piston type vacuum pump



**SIEMENS AND HITCH 25HP** rotary screw type vacuum pump



**14 AVAILABLE**

Partial view of late model exhaust blowers available



**8 AVAILABLE**

**IMAJ** digital inkjet coders



Large selection of **AB PLC** control cabinets available



Partial view of raw material available



**60+ PALLETS**

Large selection replacement motors and gearboxes available



600 lbs hydraulic scissor lift table



Partial view of spare parts and bearings available



Partial view of rolling bins available

## AUCTION DETAILS

### INSPECTION

Monday, June 27 from 9:00 A.M. to 5:00 P.M. and morning of auction to start of auction.

### REMOVAL

Small items: Wednesday, June 29 by 5:00 P.M.  
Remaining items: Tuesday, July 5 by 5:00 P.M.

### PAYMENT

Please visit our website for details at [www.corpassets.com](http://www.corpassets.com)  
A Buyer's Premium will apply at this sale.



We Accept

Please visit our website as specific terms and conditions may apply.

### TERMS

Corporate Assets Inc. assumes no liability for errors or omissions in this brochure. Corporate Assets Inc. expressly reserves the right to determine the manner of conducting the auction as it may deem appropriate. All subject to prior sale.

## AUCTION CONDUCTED BY CORPORATE ASSETS INC.

For further information contact us at:  
74 Berkeley Street  
Toronto, Ontario, Canada M5A 2W7  
Tel: (416) 962-9600 • Fax: (416) 962-9601  
Email: [info@corpassets.com](mailto:info@corpassets.com)

Web: [www.corpassets.com](http://www.corpassets.com)

Toronto • Montreal • Chicago