



**CORPORATE  
ASSETS INC**

**INCREDIBLE OPPORTUNITY!**

# PUBLIC AUCTION

**HIGHWAY 3 SPUD FARMS LIMITED**



**LATE MODEL & LOW HOUR FARM EQUIPMENT EVENT!**

DATE

TIME

LOCATION

Saturday, September 26, 2015

10:30 A.M. ADT

GTL Transportation Truck Depot  
634 Route 590  
Waterville, New Brunswick E7P 1B7

***This auction is***  
**ONSITE & ONLINE**

**CORPORATE ASSETS INC**  
“Let Our Experience Be Your #1 Asset”™  
www.corpassets.com • 416.962.9600 • info@corpassets.com

**LIVE WEBCAST powered by**  
**BidSpotter.com**



## LATE MODEL AND PRISTINE OFFERING OF FARM EQUIPMENT AVAILABLE

2014

483 HRS



NEW HOLLAND T8-420 4WD farm tractor

2012



NEW HOLLAND T7 200 front end loader tractor with 860 TL loader

2014



NEW HOLLAND LM5030 telehandler



BETTER BUILT 4825 seed cutter

2014



LANDOLL 850-30 finisher with packer 3130-31

2013



LANDOLL 2110-13 basket harrow

**MOST ASSETS HAVE BEEN VERY LIGHTLY USED AND INCREDIBLY WELL MAINTAINED BY THE OWNER. MOST FEATURING LOW HOURS.**

**This brochure is only a partial listing. PLEASE VISIT OUR WEBSITE**



# LIVE BOTTOM TRAILERS, FARM SUPPORT EQUIPMENT AND MORE!

2014



**GOW FT24 24' tandem fertilizer trailer**

2014



**GOW B780 live bottom tri-axle potato trailer**



**AULARI ALR 2006-ST grain drill**



**JOHN DEERE 2320 lawn tractor with bagger**



2001

**KEULMAC telescopic seed conveyor**



**Automatic equipment potato navigator**



**GOW seed duster**



**Tow behind potato**



**BOSS 7.5' truck mount snow plow**



**MERIDIAN 4607 L fuel tank with electric pump**



**BOMBARDIER TRAXTER ATV**

(3) DIESEL HEATERS, MILLER WELDERS, 50 TON SHOP PRESS, PRESSURE WASHERS, TOOLING, VAN TRAILERS, RGM STONE PICKER, ASSORTMENT OF CONVEYORS, TIRES, BUCKETS AND MORE!

**FOR MORE DETAILED LISTINGS AND PHOTOS. [www.corpassets.com](http://www.corpassets.com)**



2005



**INTERNATIONAL** EAGLE tandem highway tractor

2005



**INTERNATIONAL** EAGLE tandem highway tractor



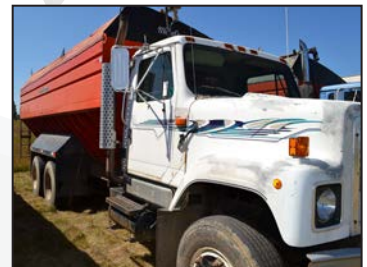
**INTERNATIONAL** live bottom potato truck



**INTERNATIONAL** live bottom potato truck



**INTERNATIONAL** potato truck



**INTERNATIONAL** potato truck

2004



**DODGE** RAM 4X4 pickup truck



**FRUEHAUF** chassis trailer with live bottom potato box



**GREAT DANE** 53' tri-axle trailer



Van trailer with 3-1500 gal. water tanks



Tandem axle 24' flatbed trailer



**EAGER BEAVER** low boy float trailer

LIVE WEBCAST  
powered by

**BidSpotter.com**

## AUCTION DETAILS

### INSPECTION

Friday, September 25, 2015 from 9:00 A.M. to 5:00 P.M. and morning of auction to start of auction.

### REMOVAL

Small items: Sunday, September 27 by 5:00 P.M.  
Remaining items: Friday, October 2 by 5:00 P.M.

### PAYMENT

Please visit our website for details at [www.corpassets.com](http://www.corpassets.com)  
A Buyer's Premium will apply at this sale.

We  
Accept

Please visit our website as specific terms and conditions may apply.

### TERMS

Corporate Assets Inc. assumes no liability for errors or omissions in this brochure. Corporate Assets Inc. expressly reserves the right to determine the manner of conducting the auction as it may deem appropriate. All subject to prior sale.



AUCTION CONDUCTED BY  
**CORPORATE ASSETS INC.**

For further information contact us at:  
74 Berkeley Street, Toronto, ON M5A 2W7  
Tel: (416) 962-9600 • Fax: (416) 962-9601

[info@corpassets.com](mailto:info@corpassets.com)

[www.corpassets.com](http://www.corpassets.com)

MEMBER IN  
GOOD STANDING



Printed in Canada. ©2014 CORPORATE ASSETS INC. ALL RIGHTS RESERVED.