



**CORPORATE
ASSETS INC**

SHORT NOTICE SALE!

PUBLIC AUCTION

Assets of
ON TOP TECHNOLOGY



NAKAMURA-TOME SC-300 CNC horizontal turning center



45" X 70" CAPACITY
TICINO 520 gap bed engine lathe



20" X 120" CAPACITY
BOEHRINGER gap bed engine lathe



LIKE NEW
HARDINGE TFB-H tool room lathe

HIGH PRECISION CNC TURNING FACILITY

DATE

TIME

LOCATION

Wednesday, December 16, 2015 | 10:30 A.M. EST | 225 Traders Blvd.
Mississauga, Ontario, L4Z 3L8

This auction is
ONSITE & ONLINE

CORPORATE ASSETS INC

"Let Our Experience Be Your #1 Asset"™

www.corpassets.com • 416.962.9600 • info@corpassets.com

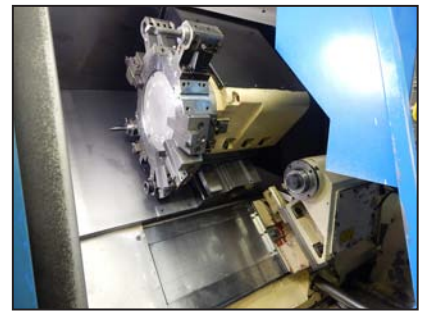
LIVE WEBCAST powered by

BidSpotter.com

EXCEPTIONALLY WELL MAINTAINED CNC TURNING EQUIPMENT



NAKAMURA-TOME SC-300 CNC horizontal turning center



View of turret and tailstock



View of chuck and turret



HITACHI HI-TEC TURN 20SII CNC horizontal turning center



FEELER FTL-10 CNC horizontal turning center

CNC TURNING CENTERS

NAKAMURA-TOME SC-300 CNC horizontal turning center with 10" 3 jaw hydraulic chuck, swing 22.05", maximum turning diameter 13.77", max. center distance 23.62", x- 8.76", z-25", spindle speeds 3,500 rpm, 3.35" spindle bore, 12 position turret, FANUC 21-T control, S/N: S302502

(2) **HITACHI** HI-TEC TURN 20SII CNC horizontal turning center with 8" 3 jaw hydraulic chuck, swing 17.7", maximum turning diameter 8", max. center distance 23", x-8.50", z-15.75", spindle speeds 20-5000 rpm, 2.25" spindle bore, 10 position turret, SEIKI multi control, S/N: 2318, 2335

FEELER FTL-10 CNC horizontal turning center 6" 3 jaw hydraulic chuck, swing 20.5", maximum turning diameter 9.4", max. center distance 10.3", x-5.5", z-11.4", spindle speed 6000 rpm, 1.25" spindle bore, 8 position turret, S/N: TC035

SAMECA MONOSAM HS 65 bar feeder S/N: M060252

MACHINE SHOP EQUIPMENT

NORTON hydraulic surface grinder with 18"x 6" magnetic chuck S/N:N/A

TOPWELL 5VK vertical milling machine with power feed, 10"x 50" t-slot table, 120-4200 rpm, NEWALL C80 Control S/N: N/A

PROSTAR vertical milling machine with power draw bar, 9.75"x50" t-slot table, 120-4200 rpm, EASSON ES-1 Control, S /N: 97092

STARTRITE H175 horizontal band saw S/N:N/A

TOYOTA 62-4FGC25 outdoor forklift 2500 lbs. cap. LPG, 3 stage mass, 423.6hrs S/N: 604FGC25-11481

MMK 400 c-axis with 15.75" chuck

ALSO: assorted LISTA tool cabinets and work benches, CAT 40 tool holders, hand tools, carbide tooling and inserts, factory support equipment, office furniture & equipment and more!

This brochure is only a partial listing. PLEASE VISIT OUR WEBSITE

ALL ASSETS WERE LIGHTLY USED & WELL MAINTAINED BY THE OWNER



HARDINGE TFB-H tool room lathe



HARDINGE HLV-H tool room lathe



HARDINGE HTC tool room turret lathe



BOEHRINGER gap bed engine lathe



GRAZIANO TORTONA SAG20 gap bed engine lathe



TICINO 520 gap bed engine lathe



TOPWELL 5VK vertical milling machine



PROSTAR vertical milling machine

ENGINE LATHES

HARDINGE TFB-H tool room lathe with geared head, power saddle, 125-3000 rpm, 1.5hp, 3ph, 550 volt, S/N: LTA8220

HARDINGE HLV-H tool room lathe with geared head, power saddle, 125-3000 rpm, 1.5 hp, 3 ph, 220 volt, S/N: LCH8220

HARDINGE HTC tool room turret lathe with 1.5 hp, 3 ph, 110 volt, S/N: HCVAPB

TICINO 520 gap bed engine lathe with 45" swing, 70" centers, 6.25" spindle bore, 16" 3 jaw chuck, 6-600 rpm, 31.50" 4 jaw chuck and tool post grinding attachment

BOEHRINGER gap bed engine lathe with 20" swing, 120" centers, 11.2-2240 rpm, 2.25" spindle bore S/N:N/A

GRAZIANO TORTONA SAG20 gap bed engine lathe with 25" swing, 80" centers, 6-1300 rpm, 2" spindle bore S/N: 39436

INSPECTION EQUIPMENT

STARRETT 24" x 18" x 6" granite surface plate

MITUTOYO 24" X 5" granite surface plate

MITUTOYO outside micrometer set

6" and 24" verniers

.251-.500 pin gauge set

FOR MORE DETAILED LISTINGS AND PHOTOS. www.corpassets.com



MMK 400 4th-axis with 15.75" chuck



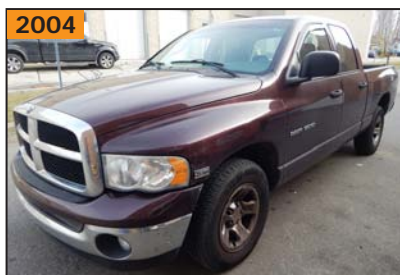
NORTON hydraulic surface grinder



TOYOTA 62-4FGC25 outdoor forklift



2 ton free standing jib arm with 2 ton jet electric hoist



DODGE 5.7 Liter HEMI 4 door quad cab pick-up truck



TOYOTA TACOMA 4.0 Liter 4 door pick-up truck



CHEVROLET AVALANCHE 4 door pick-up truck



(2) HONDA gas powered generators & NOMA gas powered snow blower



Partial view of LISTA tool cabinets available



Partial view of inspection equipment available



Partial view of inspection equipment available



MITUTOYO outside micrometer set

VEHICLES

TOYOTA (2006) TACOMA 4.0 Liter 4 door pick-up truck 220,000KMS, VIN# 5TEMU52NX6Z184657
DODGE (2004) 5.7 Liter HEMI 4 door quad cab pick-up truck 307,000 KMS, VIN#1D7HA18D14S746714
CHEVROLET (2003) AVALANCHE 4 door pick-up truck VIN# 3GNEC13TX3G219614

All auctions are ONLINE & ONLINE

UPCOMING AUCTIONS

New auctions added to our website regularly!

LIVE WEBCAST powered by:
BidSpotter.com

BASSE MACHINE AND TOOL LTD. & PRECISION CNC TURNING FACILITY
 Bolton, Ontario, CANADA
 Thursday, January 21, 2016
2 AUCTIONS SAME DAY!

Surplus Assets of HOWCO GROUP
MULTI-MILLION DOLLAR CNC MACHINING EVENT!
 Houston, Texas, USA
 February TBD, 2016



AUCTION DETAILS

INSPECTION

Tuesday, December 15 from 9:00 A.M. to 5:00 P.M. and morning of auction to start of auction.

REMOVAL

Small items: Thursday, December 17 by 5:00 P.M.
 Remaining items: Wed. December 23 by 5:00 P.M.

PAYMENT

Please visit our website for details at www.corpassets.com
 A Buyer's Premium will apply at this sale.



We

Accept

Please visit our website as specific terms and conditions may apply.

TERMS

Corporate Assets Inc. assumes no liability for errors or omissions in this brochure. Corporate Assets Inc. expressly reserves the right to determine the manner of conducting the auction as it may deem appropriate. All subject to prior sale.

AUCTION CONDUCTED BY CORPORATE ASSETS INC.

For further information contact us at:
 74 Berkeley Street, Toronto, ON, M5A 2W7
 Tel: (416) 962-9600 • Fax: (416) 962-9601
 Email: info@corpassets.com
Web: www.corpassets.com
Toronto • Montreal • Chicago

MEMBER IN
GOOD STANDING

