

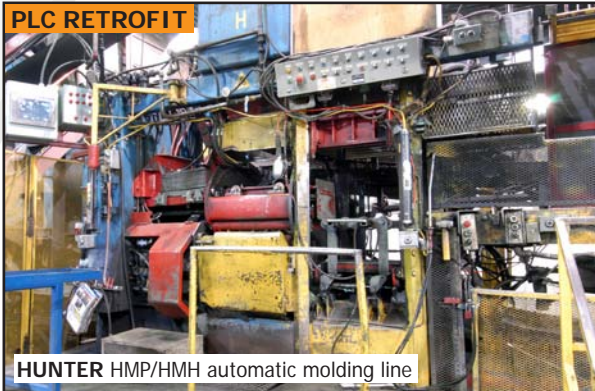


**CORPORATE
ASSETS INC**

800+ LOT SALE!

PUBLIC AUCTION

Surplus to the Ongoing Operations of
MUELLER CANADA LTD.



COMPLETE GREEN SAND IRON FOUNDRY

DATE

TIME

LOCATION

Tuesday, August 25, 2015

10:30 A.M. EDT

230 Rue Castonguay Ouest,
St. Jerome, Quebec, J7Z 5V2

This auction is
ONSITE & ONLINE

CORPORATE ASSETS INC

"Let Our Experience Be Your #1 Asset"™

www.corpassets.com • 416.962.9600 • info@corpassets.com

LIVE WEBCAST powered by

BidSpotter.com

LARGE OFFERING OF FOUNDRY ASSETS AVAILABLE FOR SALE

PLC RETROFIT



HUNTER HMP/HMH automatic molding line



HUNTER inclined cooling conveyor



TRANSFER ROBOT

HUNTER HMH220 12 x 2 mold carousel



COOPER CHAPMAN U180 hot box core machine



PALMER MIXER

REDFORD CARVER CB22 cold box core machine



2 AVAILABLE

REDFORD CARVER HP43 hot box core machine



2 AVAILABLE

BMM BT6 L-555 roll over, draw, jolt & squeeze molding machine

ALL ASSETS WERE WELL MAINTAINED BY THE COMPANY.

This brochure is only a partial listing. PLEASE VISIT OUR WEBSITE



9 TON / 2500 KW

ABB IT6P electric induction melting furnace



25 TON / 1500 KW

ABB IT9P electric induction melting furnace



B&P 100B ALSO AVAILABLE

B&P 60A twin wheel speed muller



CUSTOM pouring line



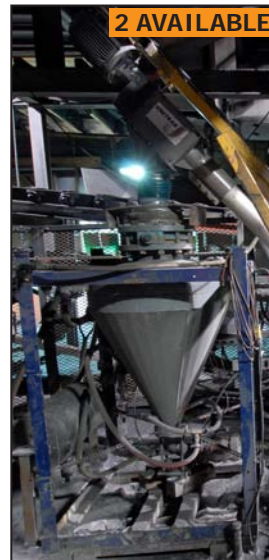
2 AVAILABLE

HARTLEY sand tester/bond determinator



2006

DIDION BD-80 rotary drum sand reclaimer



2 AVAILABLE

HARTLEY sand transporter



2 AVAILABLE

BMM BT6 L-555 roll over, draw, jolt & squeeze molding machine



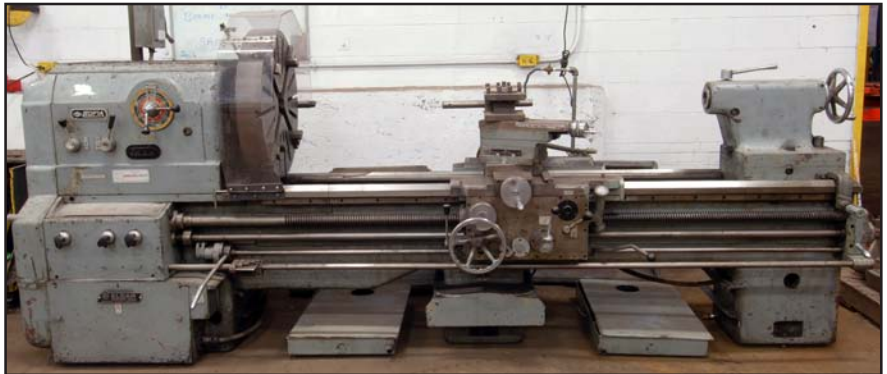
3 AVAILABLE

WEBSTER-BENNETT 48" vertical turret lathe



20" X 60" CAPACITY

FERRO 20 engine lathe



SOFIA gap bed engine lathe



2 AVAILABLE

SINTO SST COYOTE abrasive blasting machine



2 AVAILABLE

CINCINNATI SPL heavy duty pedestal grinder



Shot blast cabinet



ERLO geared head drill



OSTER threader

SUBSCRIBE TO OUR E-NEWSLETTER
TO RECEIVE NOTIFICATIONS OF ALL
OUR UPCOMING AUCTIONS!

www.corpassets.com/newsletter-signup

CONTACT 416.962.9600 TO CONSIGN EQUIPMENT AT AN UPCOMING AUCTION

HEAVY MATERIAL HANDLING EQUIPMENT AVAILABLE!



HEAVY DUTY LOADER

BENCO TRANSCARGEUR mining mini loader



TENNANT 6600 ride on floor sweeper



SNORKEL WILDCAT SL25 scissor lift



CATERPILLAR 966B TRAXCAVATOR front end loader



JOHN DEERE 590D diesel excavator



FREIGHTLINER dump truck



FORD F350 flatbed truck



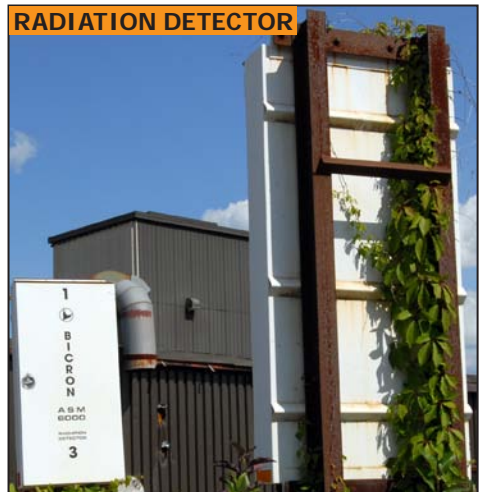
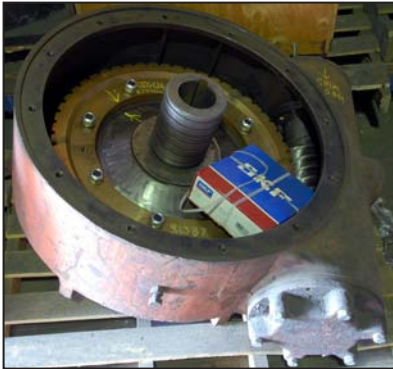
5000 LBS CAPACITY

HYSTER S50XM LPG forklift

LARGE OFFERING OF PERISHABLE TOOLING AVAILABLE!

TO SCHEDULE AN AUCTION CONTACT 416.962.9600

800+ LOT SALE! THIS IS A PARTIAL LISTING ONLY!

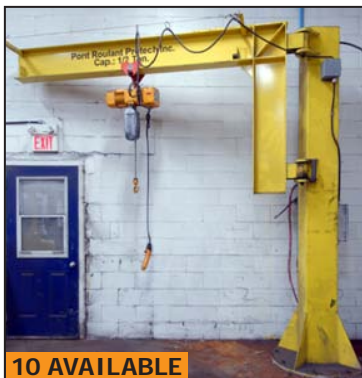


This brochure is only a partial listing. PLEASE VISIT OUR WEBSITE

COMPLETE LAB, MATERIAL HANDLING, FACTORY EQUIPMENT & MORE!



2014 CRANE SYSTEM



10 AVAILABLE



25+ AVAILABLE



10+ AVAILABLE



LAB EQUIP.



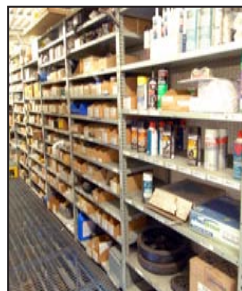
10+ AVAILABLE



5+ AIR COMPS AVAILABLE



BEARINGS



250+ AVAILABLE

FOR MORE DETAILED LISTINGS AND PHOTOS. www.corpassets.com



FOUNDRY EQUIPMENT

MFS natural gas fired scrap preheat system with, retrofit digital microprocessor controls; (6) 1,500,000 BTU/HR capacity burners; shaker conveyor; scaled feeder; s/n 84803

ABB IT9P electric induction melting furnace with 25 ton capacity, 1500 KW power supply, glycol & air cooling systems, s/n n/a

ABB IT6P electric induction melting furnace with 9 ton capacity, 2500 KW power supply, glycol & air cooling systems, s/n n/a

(2) **MODERN GEAR** MODEL-A box for ladles, s/n n/a

(2) **MODERN GEAR** MODEL-C box for ladles, s/n n/a

HUNTER HMP/HMH automatic molding line with RETROFIT ALLEN BRADLEY PLC controls and integration, in 20" x 24" flask configuration with 14" x 19" capability, consisting of: HUNTER HMP-20C automatic molding machine with ALLEN BRADLEY PLC controls, s/n A75A622; B&P 60A twin wheel speed muller (sand mixer) with 75 HP, s/n 60A-315-6607; HARTLEY sand tester/bond determinator, s/n n/a; MFG UNKNOWN auger type bond transporter with load cells and SUPER SACK support holder, s/n n/a; HUNTER HMH220 12 x 2 mold carousel with transfer robot, weights and jackets, s/n A75M184; HUNTER shuttle conveyor and transfer table, s/n n/a; HUNTER inclined cooling conveyor, s/n n/a; (2006) 24"x125" steel plate apron conveyor, s/n n/a; DIDION (REBUILT&INST. 2006) MD20 media drum shaker, s/n DM-217 MD-20; (2) ELECTRO-NITE DT400 48" digital temperature probes; ROTOCONE dust collector and media recovery unit; sand transport conveyors; S/N N/A (MAY BE OFFERED AS A COMPLETE LINE OR BY COMPONENT)

(2) **BMM** BT6 L-555 roll over, draw, jolt & squeeze molding machines, s/n n/a

REDFORD CARVER (2000) CB22 cold box core machine with 55-75lbs cap solid shell, 22" x 24" platens, s/n 549-CB22-SA

REDFORD CARVER HP43 hot box core machine with 15 lbs cap solid shell, 13" x 12" platens, s/n n/a

REDFORD CARVER HP42 hot box core machine with 5 lbs cap solid shell, 12" x 9" platens, s/n n/a

COOPER CHAPMAN CAG-3021-70 hot box core machine, s/n n/a

PALMER (2000) M200 continuous type sand mixer with 200 lbs/min capacity, bucket elevator and sand receiver (BOTH NEW IN 2014); s/n M4128

B&P 100B three wheel speed muller (sand mixer) with 150 HP, s/n 100B-1286404-"P"

HARTLEY sand tester/bond determinator, s/n n/a; MFG UNKNOWN auger type bond transporter with load cells, s/n n/a

(2) **GENERAL KINEMATIC** (REBUILT 2011) approx. 6' x 30' shaker conveyors, s/n C7711-1; C7711-4

DIDION (2006) BD-80 rotary drum sand reclaimer, s/n DM-437R

CONVEYOR DYNAMICS (2004) 34 X 8 RF feeder conveyor, s/n 3070410

MFG UNKNOWN 24" x 60" approx. magnetic cross belt separator, s/n n/a

(250+) 35" x 35" & 40" x 40" steel molding boxes with hangers

LARGE QUANTITY of spare and rebuilt heavy duty rated electric motors from 5HP to 1500HP;

LARGE MACHINERY SPARES INVENTORY, NEW radiant facility heating systems, power tools, factory support equipment, raw material, stackable bins & MUCH MORE!

AUCTION DETAILS

INSPECTION

Monday, August 24 from 9:00 A.M. to 5:00 P.M. and morning of auction to start of auction.

REMOVAL

Small items: Wednesday, August 26 by 5:00 P.M.

Remaining items: Friday, September 12 by 5:00 P.M.

PAYMENT

Please visit our website for details at

www.corpassets.com

A Buyer's Premium will apply at this sale.



We

Accept

Please visit our website as specific terms and conditions may apply.

TERMS

Corporate Assets Inc. assumes no liability for errors or omissions in this brochure. Corporate Assets Inc. expressly reserves the right to determine the manner of conducting the auction as it may deem appropriate. All subject to prior sale.

AUCTION CONDUCTED BY CORPORATE ASSETS INC.

For further information contact us at:

74 Berkeley Street

Toronto, Ontario, Canada M5A 2W7

Tel: (416) 962-9600 • Fax: (416) 962-9601

Email: info@corpassets.com

Web: www.corpassets.com

Toronto • Montreal • Chicago

All auctions are **UPCOMING AUCTIONS**

ONLINE & ONLINE

New auctions added to our website regularly!

LIVE WEBCAST
powered by:

BidSpotter.com

WORLD CLASS OFFERING
OF A LARGE PAPER MILL
MAJOR REBUILD IN 2012
FOR OVER \$50M
Brainerd, Minnesota, USA
Thursday, August 13, 2015

Assets of the Former
KELLOGG'S LONDON FACILITY
3 DAY GLOBAL AUCTION EVENT!
1M Sq. Ft Kellogg's Ready-to-Eat Cereal Plant
London, Ontario, CANADA
August 18, 19 & 20, 2015

Surplus to the Ongoing Needs of
BULLDOG TOOL & EXTRUSIONS LTD.
Plastic Extrusion & Light Machining Facility
Concord, Ontario, CANADA
Thursday, September 17, 2015

MEMBER IN
GOOD STANDING

