

MASSIVE MULTIMILLION DOLLAR EVENT!

PUBLIC AUCTION

**CORPORATE
ASSETS INC**



Cascades EAST ANGUS PLANT

2 AVAILABLE



DOMINION ENGINEERING & BLACK CLAWSON kraft paper machine



Huge qty of MCC available



(2) reel winders & (2) slitters available

2010



BLACK CLAWSON OCC preparation line

5000 HRS



CATERPILLAR 966G front end wheel loader



Huge motor inventory available

5000+ LOT & 2 DAY PAPER MILL AUCTION!

DATE

TIME

LOCATION

Wednesday, April 15, 2015
& Thursday, April 16, 2015

| 9:30 A.M. EDT |

248 Rue Warner,
East Angus, QC, Canada, JOB 1R0

This auction is
ONSITE & ONLINE

CORPORATE ASSETS INC

"Let Our Experience Be Your #1 Asset"™

www.corpassets.com • 416.962.9600 • info@corpassets.com

LIVE WEBCAST powered by

BidSpotter.com

MAJOR RETROFIT IN 2003



151" TRIM & 2000 FPM

DOMINION ENGINEERING & BLACK CLAWSON kraft paper machine (PM#3)



GL&V BTF



2003 HEADBOX

GL&V headbox and MEC-FAB FOURDRINIER



LANGSTON SPEED MASTER #303 slitter re-winder



176" MAX ROLL DIAMETER

VOITH reel winder



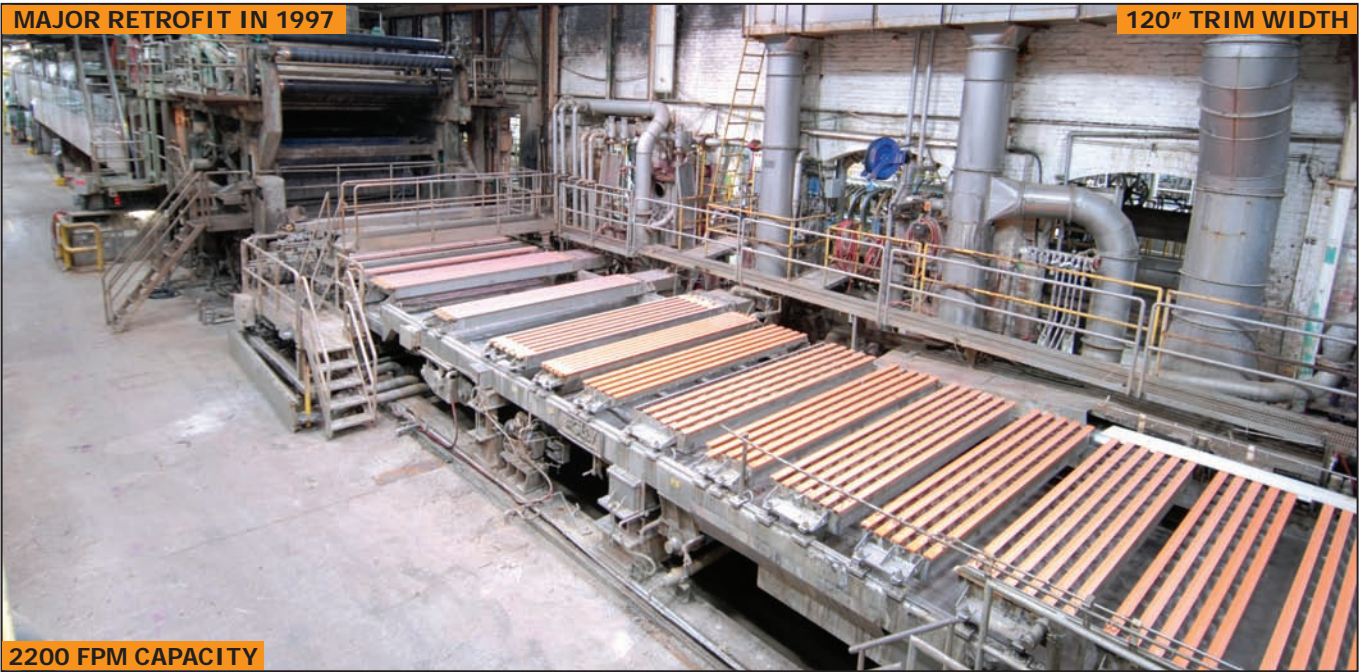
100 HP

CENTRISCREEN-BIRD 18 head screen

This brochure is only a partial listing. PLEASE VISIT OUR WEBSITE

MAJOR RETROFIT IN 1997

120" TRIM WIDTH



2200 FPM CAPACITY

GL&V, BLACK CLAWSON & BELOIT kraft paper machine (PM#4)



GL&V DR1-16 pressurized type HEADBOX



BELOIT Tri-Nip press section



CLUPAK BELOIT 132" extensible unit paper krinkler



METSO PAPER IQ scanner



View of calendar roll



CENTRISCREEN-BIRD 24 head screen



VALMET M-REEL winder



BELOIT M 24-R-60 slitter re-winder

PAPER MACHINES MAY BE SOLD AS A LINE OR BY COMPONENTS.

PLEASE CONTACT 416.962.9600 FOR FURTHER DETAILS.

PULPER #3 BLACK CLAWSON OCC STOCK PREPARATION LINE



INSTALLED 2010 - \$5M

BLACK CLAWSON-NEILSEN & HEIBERT OCC continuous type stock preparation line



20' DIAMETER

BLACK CLAWSON 20-D full stainless steel pulper



BLACK CLAWSON M14 ragger



30" X 30"

BLACK CLAWSON hydraulic tail cutter



View of spare HYDRAPULPER #4 drive

PULPER #3 OCC STOCK PREP LINE

BLACK CLAWSON-NEILSEN & HEIBERT (Installed 2010 - \$5M) OCC (Old Corrugated Carton) continuous type stock preparation line with 240 MT/day capacity consisting of: BLACK CLAWSON 20-D pulper with 20' diameter, modified "D" shape stainless steel tub, BLACK CLAWSON HYDRAPULPER #4 drive with a 500HP drive motor, 86" diameter stainless steel rotor, complete trash tower kit; NEILSEN & HEIBERT WIREHAWG II hydraulic bale breaker with twin cylinder guillotine and 75HP hydraulic power pack; BLACK CLAWSON M14 ragger; BLACK CLAWSON 30"x30" with hydraulic power tail cutter; HYCOR 3672-24 stainless steel trommel screen with 35.75" diameter x 94" chain drive stainless steel drum; BLACK CLAWSON HYDRAPURGE II de-trasher with 24" chrome rotor and bed plate, stainless steel housing, 100 HP; NEILSEN & HEIBERT trash tower hydraulic grapple hoist with 2 ton cap, pendant control; VIBROTECH BP25-P9-96-4HA, 53"x96" steel belt feed conveyor with steel guard; SHERBROOKE O.E.M. CONV-P2180, 96"x25" rubber belt approach conveyor; hydraulic press trash compactor; GOULDS 8"x6"x18" stainless steel discharge pump; GOULDS 1.5"x1"x6" stainless steel clarified water pump; large assortment of essential spare parts and components comprising BRAND NEW 600 HP motor, refurbished stainless steel rotor and new base plate; HYDRAPULPER #4 drive, s/n n/a (PULPER#3)

**LARGE
COMPLIMENT OF
SPARE PARTS
AVAILABLE
FOR THIS LINE**

This brochure is only a partial listing. PLEASE VISIT OUR WEBSITE



ALLEN BRADLEY PLC CONTROLS

CYVECTOR automatic roll handling and packaging line



View of **CYVECTOR** automatic roll handling and packaging line



BLACK CLAWSON 18' pulper stock preparation line



View of **PULPER #1** retrofit feed conveyor



BLACK CLAWSON 20' pulper stock preparation line with **SCAVENGER #2**



10 MT/HOUR CAPACITY

HDS DWT 24/8LC twin wire press

ROLL PACKAGING

CYVECTOR automatic roll handling and packaging line with **ALLEN BRADLEY** PLC controls, max 60"x100" roll capacity consisting of: PM#4 short side steel infeed conveyor; PM#3 long side steel infeed conveyor; infeed loading stopper; positioner; roll sizer; header, stepper conveyor; wrapper; high temp heat sealer; **SAMUEL** steel bander; ink jet bar coders; roll transfer conveyor; s/n n/a

STOCK PREPARATION DEPARTMENT

BLACK CLAWSON stock preparation line consisting of: (1) **BLACK CLAWSON** 20' & (1) **BLACK CLAWSON** 18' pulper, **BLACK CLAWSON** **HYDRAPULPER** #3 drive with 350HP motor, **VOKES** rotor 67.75" diameter stainless steel, **BLACK CLAWSON** M14 ragger; steel belt feed conveyor; **AHLSTROM** 10"x6"x21" stainless steel discharge pump with 200 HP motor; large assortment of essential spare parts & components comprising 350 HP motor, replacement stainless steel rotor & base plate



SATURN POSEIDON water clarifier

THIS CATALOGUE IS A PARTIAL LISTING ONLY!

MASSIVE OFFERING OF PLANT SUPPORT EQUIPMENT AVAILABLE

500K NEW



2002 - NEVER USED

VOITH MSA/15/15 pressure screen



VARGO drum type effluent filter

6 AVAILABLE



FIBERPREP LAMORT CH5 and CH3 stainless steel horizontal pressure screens



6 AVAILABLE

SPROUT WALDRON EM-TYPE II & III refiners 26" & 34"



2 AVAILABLE

BLACK CLAWSON TWIN HYDRADISC refiners



12+ AVAILABLE

NASH heavy duty vacuum pumps



12+ AVAILABLE

NASH heavy duty vacuum pump & motor



5+ AVAILABLE

PROCHEM single action tank agitator



View of agitator propeller



20+ AVAILABLE

GOULDS chemical resistant stainless steel centrifugal pump



20+ AVAILABLE

GOULDS & AHLSTROM stock stainless steel centrifugal pumps



15+ AVAILABLE

GOULDS stainless steel centrifugal pump



GOULDS clarified water pump



REFURBISHED

VOKES rotor



15+ AVAILABLE

GOULDS stainless steel centrifugal pump

CONTACT 416.962.9600 TO CONSIGN EQUIPMENT AT AN UPCOMING AUCTION

LARGE CAPACITY & WELL MAINTAINED MACHINING DEPARTMENT



1999
UNIVERSAL HEAD
KH KMB-U3 heavy duty universal milling machine



1999
TONE FAN RD-900 3' radial arm drill



DC MORRISON
heavy duty keyseater



22"/29" X 80" CAPACITY
VICTOR S-2280S gap bed engine lathe



20" X 80" CAPACITY
AFM TUG 40 gap bed engine lathe



22"/31" X 80" CAPACITY
TOS SN55-71 gap bed engine lathe



20" X 144" CAPACITY
BOYE & EMMES gap bed engine lathe



1999
BAXTER VERTICUT 360-AVS 10"x16" horizontal band saw



HYD-MECH S20 SERIES II 13"x18" horizontal band saw



DOALL ZW-3620 vertical band saw



2 AVAILABLE
ENERPACK 100 TON cap electro hydraulic shop press



150 TON
JAS MORRISON horizontal hydraulic wheel press



10 TON
KONE CLASS D monorail crane



10 TON
KITO chain hoists with trolleys



5 TON
KITO chain hoists with trolleys



3 TON
BUDGET chain hoist



20+ AVAILABLE
Partial view of welders and plasma cutters available

LARGE QUANTITY OF PERISHABLE TOOLING, MACHINE ACCESSORIES, LISTA TOOL CABINETS, POWER TOOLS, INSPECTION EQUIPMENT & MUCH MORE!

TO SCHEDULE AN AUCTION CONTACT 416.962.9600

COMPLETE LABORATORY & TESTING DEPARTMENT AVAILABLE FOR SALE



METSO SOFTWARE

VALMET PAPERLABi PAL-16 multi function tester



1000 LBF CAPACITY

INSTRON 1011 bench type digital tensile tester



PULLMAC MS-B1 master screen



TECHNIDYNE TB-1CM TECHNIBRITE digital ISO brightness tester



METROHM 790 MPT TITRINO digital titrator



FISHER SCIENTIFIC 615F digital ISOTEMP lab oven



THERMO ELECTRON 280 SERIES digital microprocessor controlled water bath



FISHER SCIENTIFIC 220 bench type digital ISOTEMP water bath



2 AVAILABLE

STANDEX MULLEN bench type burst tester



LABTECH 400-1 automatic sheet press



INSTRUMENTATION LABORATORY VIDEO 12 aa/ae spectrophotometer



THWING-ALBERT INSTRUMENT digital thickness tester

PARTIAL VIEW OF FISHER VALVES AND CONTROLS AVAILABLE



100s AVAILABLE



This brochure is only a partial listing. PLEASE VISIT OUR WEBSITE

5000 HOURS



EXCELLENT CONDITION

CATERPILLAR 966G front end wheel loader



10 AVAILABLE

Partial view of forklifts available



10,000 LBS CAPACITY

CATERPILLAR GK45K-SWB LPG forklift



Partial view of cascade hydraulic forklift attachments available



PLATOLIFT PL25 electric scissor lift

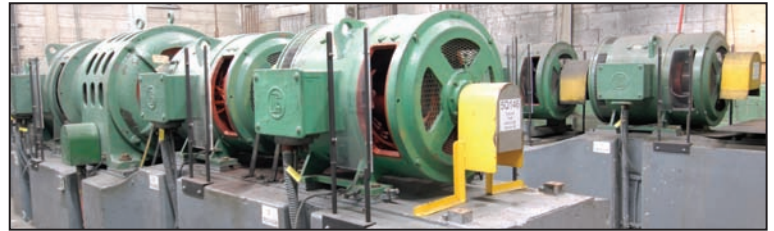


GMC GRUMMAN emergency response - fire fighting truck

PLEASE VISIT WWW.CORPASSETS.COM TO VIEW A NUMBER OF OUR UPCOMING AUCTIONS!

FOR MORE DETAILED LISTINGS AND PHOTOS. www.corpassets.com

TREMENDOUS OFFERING OF SPARE PARTS & MCC AVAILABLE!

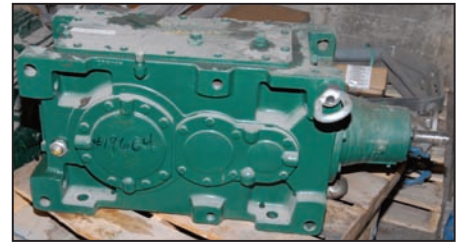


SWITCH GEAR & ELECTRICAL SPARE PARTS INVENTORY

LARGE QUANTITY OF TRANSFORMERS AND ELECTRICAL SWITCH GEAR THROUGHOUT THE PLANT FEATURING: (2) WESTINGHOUSE (7) column modular MCC panels; WESTINGHOUSE (6) column modular switch gear panels; FEDERAL PIONEER (8) column modular switch gear panels; (3) REX MANUFACTURING 5000KVA high voltage dry type transformers; (5) GENERAL ELECTRIC TMEIC large capacity VFD's; (2) GENERAL ELECTRIC inverters; (2) PIONEER 13800-600V outdoor pad transformers; FEDERAL PIONEER (5) column modular MCC panels; HUGE selection (400+) OF NEW AND REBUILT ELECTRIC MOTORS FROM 5 HP up to 600 HP; (60+) spools of high and medium voltage COPPER & ALUMINUM electrical wire

CONTACT 416.962.9600 TO CONSIGN EQUIPMENT AT AN UPCOMING AUCTION

MASSIVE BEARING, VALVE, PUMP, GEARBOX & ROLL INVENTORY!

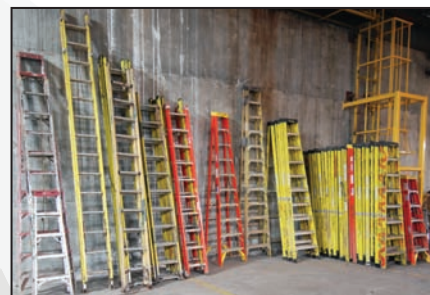


SPARES INVENTORY & FACTORY EQUIPMENT

HUGE INVENTORY OF STAINLESS STEEL FISHER AUTOMATIC valves (BRAND NEW) from 2" to 32" diameter, STAINLESS STEEL knife and gate valves; stainless steel and titanium high shear pump impellers and pump housings, flow meter valves; large qty of stainless steel, iron and non ferrous paper machine replacement rolls both NEW and refurbished; GOULDS & AHLSTOM high volume corrosion resistant centrifugal pumps, high shear stainless steel transfer pumps; anti-foaming pumps; large quantity of gear boxes, sheaves, sprockets, driveline components; MASSIVE OFFERING OF BRAND NEW SKF, FAG, TIMKEN AND RHP ROLLER & BALL BEARINGS

ALSO: (25+) ENERPACK electro-hydraulic portable power packs with hydraulic jacks up to 150 ton cap; heavy duty bench type induction bearing heaters; LARGE SELECTION OF DRILLS, MILLS, REAMERS & TAPS; carbide insert tooling; GREENLEE hydraulic pipe and conduit benders, large quantity of hydraulic power packs; rigging and lifting equipment comprising late model lightly used chain falls, come-a-longs, straps, slings, chains & hooks; MASSIVE OFFERING OF SNAP-ON hand tools, MILWAUKEE & INGERSOLL RAND power and pneumatic tools; complete GREENLEE AND SNAP ON puller sets; (30+) LISTA & ROUSSEAU tool cabinets with up to 16-drawer; double door flammable storage cabinets, LARGE QUANTITY of ferrous and non ferrous sheet and plate stock, bar stock, square, round & angle stock, (30+) self dumping hoppers; complete woodworking shop & MUCH MUCH MORE!

TO SCHEDULE AN AUCTION CONTACT 416.962.9600



30+ AVAILABLE



30+ AVAILABLE



SPARE PARTS YARD CONSISTING OF APPROXIMATELY 1000 TONS OF STAINLESS STEEL & OTHER FERROUS SCRAP MATERIALS



AUCTION DETAILS

INSPECTION

Monday, April 13 & Tuesday, April 14, 2015 from 9:00 A.M. to 5:00 P.M. & morning of auction days to start of auction.

REMOVAL

Small items: Friday, April 17 by 5:00 P.M.
Remaining items: Friday, May 8 by 5:00 P.M.

PAYMENT

Please visit our website for details at www.corpassets.com
A Buyer's Premium will apply at this sale.



We

Accept

Please visit our website at specific terms and conditions may apply.

TERMS

Corporate Assets Inc. assumes no liability for errors or omissions in this brochure. Corporate Assets Inc. expressly reserves the right to determine the manner of conducting the auction as it may deem appropriate. All subject to prior sale.

AUCTION CONDUCTED BY CORPORATE ASSETS INC.

For further information contact us at:
74 Berkeley Street

Toronto, Ontario, Canada M5A 2W7

Tel: (416) 962-9600 • Fax: (416) 962-9601

Email: info@corpassets.com

Web: www.corpassets.com

Toronto • Montreal • Chicago

MEMBER IN
GOOD STANDING

