



**CORPORATE  
ASSETS INC**

**MAJOR 1500 LOT SALE!**

# PUBLIC AUCTION

**TRUE NORTH  
HARDWOOD PLYWOOD INC.**



**2 AVAILABLE**

Partial view of veneer press/platten lines available



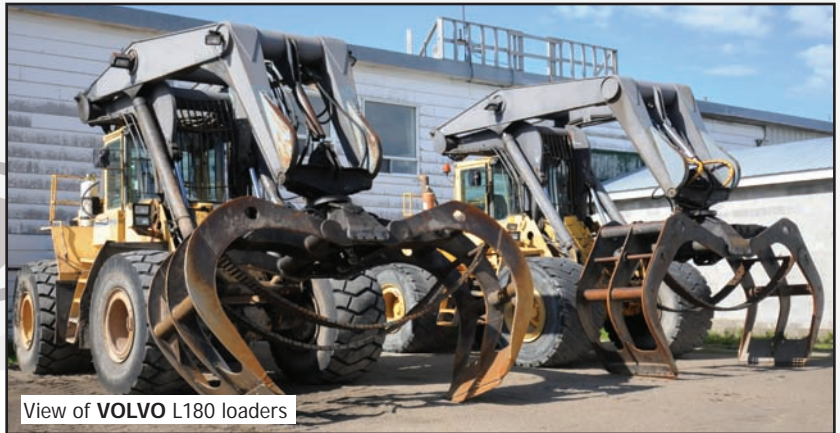
**2 AVAILABLE**

DURAND RAUTE veneer stacker



**5 AVAILABLE**

Partial view of dust collectors available



View of VOLVO L180 loaders

**COMPLETE PLYWOOD MILL, FINISHING DEPARTMENTS, VENEER LINES,  
SAWING & SANDING LINES, CHIPPING, MAINTENANCE & STORES!**

**LARGEST WOODWORKING EVENT OF THE YEAR!**

**DATE**

**TIME**

**LOCATION**

Thursday, August 7, 2014

10:00 A.M. EDT

4 Boisvert Crescent  
Cochrane, ON, CANADA P0L 1C0

**This auction is**  
**ONSITE & ONLINE**

**CORPORATE ASSETS INC**

**"Let Our Experience Be Your #1 Asset"™**

www.corpassets.com • 416.962.9600 • info@corpassets.com

**LIVE WEBCAST powered by**



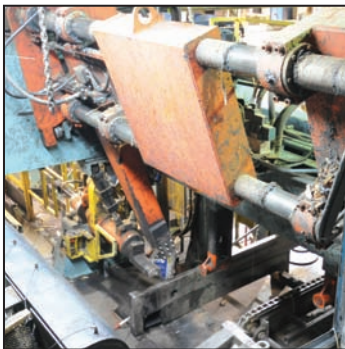




Log alignment conveyor



COE 96" veneer lathe



**DURAND RAUTE** hydraulic lathe charger



COE 48" veneer lathe



Overall view of log pond



Partial view of jack ladders available



Overall view of **COE** veneer lathes control stations



**VENTEK** scanning system for lathes



**COE** lathe electrical cabinets

## GREEN LINE

Log Alignment Conveyor, Jack Ladder and Slasher Saw w/ 30' x 9', 4 Chain Feed Conveyor, 1996 Carbotech 71-75AA, 30" Ring Debarker w/ Control Room and Operators Console, Conveyor, 7 x Kicker System, Overflow Storage, 140' x 2', 1 Chain, (6) Log Ponds, Runway Chain Conveyor, 100' x 9' x 10', 2 Chain, 3 - Eclipse Pond Heating Model IJ8-V1.1, Controls, Panels, Pumps, Blowers, Swing Saw Single Chain Infeed Conveyor w/ Reversible Feed, 100' x 1' Chain, 1993 SA Manufacturing 54 Log Swing Saw w/ Control Room, Outfeed Conveyor Single Chain 50' x 1' w/ Reversible Feed, (4) Hyd Kickers, 2003 Cutler-Hammer Series 2100 Electrical/Breaker Panel

## COE 48" VENEER LINE

Wabi Infeed Conveyor & Incline Conveyor for Lathe, size - 26' x 4', 3 Chains, COE Hydraulic Charger for Lathe w/ Hydraulic Power Supply, COE 263, 48" Veneer Lathe w/ Control Room, Hydraulic Power Supply - 2, 20hp Electric Hydraulic Pumps, Powered Transfer Belt Conveyor size - 20' x 4', 3 Belts, Altec Thickness Scanner System w/ Electronic Sensors, Ventek NV 80188 Defect Scanner System w/ Controller located in Operators Booth, LAP Moisture Reader w/ 2 Sensors, Elliott Bay 48" Semi-automatic Veneer Clipper, Durand-Raute 2 Level Diverter size - 10' x 4', 4 Belts, Durand-Raute Double Deck Belt Conveyor size 25' x 4', 3 Belts, Durand-Raute Veneer Stacker w/ Hydraulic Power Supply, Lloyd Controls Electro/Breaker Panel

## COE 96" VENEER LINE

Infeed 2 Strand Chain Conveyor size - 30' x 7", 1996 Durand-Raute Hydraulic Lathe Charger w/ Durand - Raute Hydraulic Power Supply, 2 - 60 hp. Hydraulic Pumps, 1996 Coe 263, 96" Veneer Lathe w/ Control Room and Operator Console, 2007 Durand-Raute X-Y-Z Optimizing and Alignment Unit w/ Laser Reader, Dagota Systems Backup Roll & Chuck Upgrade w/ 1990 Hydraulic Power Supply, 1-60 hp, 1-50 hp Hydraulic Pumps, Lathe Outfeed Belt Conveyor size - 120" x 96", 6 Belts, Main Control Room for Lathe Lines w/ PLC Cabinets, Electrical Cabinets, Ventek Controllers, Camera Monitoring Stations, Altec Thickness Scanner System w/ 3 Sensors, Ventek NV 80188 Defect Scanner System, LAP Moisture Reader w/ 3 Sensors, 1996 Durand-Raute 96" Rotary Clipper, 2000 Elite Updated Clipper Controller, Durand-Raute 2 Level Diverter w/ Bag House, 2 Electric Blowers, 11 Dust Bags, Conveyor 10' x 8', 7 Bel, Durand-Raute 3 Section Automatic Stacker w/ Outfeed Roller System, 30' x 8', 4 Belts, Cutler Hammer Electrical/Breaker Panel

**This brochure is only a partial listing. PLEASE VISIT OUR WEBSITE**



# ALL MAJOR ASSETS WERE WELL MAINTAINED AND READY FOR PRODUCTION!



**DURAND RAUTE** grading/stacking station



**2 AVAILABLE**

**DURAND RAUTE** rotary clipper



**2 AVAILABLE**

**DURAND RAUTE** veneer stacker



**VENTEK** moisture detection system



**VENTEK** defect/laser marking system



**RAUTE 8'** veneer dryer line



**COE 4'** veneer dryer line



Partial view of scissor tables available

## COE 4' DRYER LINE

**COE 4', 3 Station Veneer Dryer Feeder w/ Scissor Lifts, (2) Hydraulic Automatic Feeders, 1 Manuel Feeder, 1995 Coe L353 4 Level Natural Gas Veneer Dryer w/ 3 Zones, 13 Chambers, Belt Outfeed Conveyor size - 20' x 8', 13 Belts, 2005 Ventek 18 Station Moisture Detection System, 1995 Coe Oven Control Panel, Cutler Hammer 9800 Electrical/Breaker Panel**

## RAUTE 8' DRYER LINE

**RAUTE Wood 8' Dryer Feeder, Scissor Lifts, Rotary Hydraulic Feeder, 3 Station Feeder, 1995 Coe L353, 4 Level Natural Gas Veneer Dryer w/ 3 Zones, 14 Chambers, 1995 Coe Oven Control Panel, 1995 Cutler Hammer Freedom 21 Electrical/Breaker Panel, 1995 Durand-Raute 4 Level Sequential Unloader, 1996 Transport Belt Conveyor size - 25' x 13', 14 Belts, 2004 Ventek 18 Station Moisture Detection System, 2004 Ventek GS 2000 Dry Veneer Grading System w/ Conveyor, 5 Belts, 1996 Durand-Raute 6 Section Automatic Stacker w/ Outfeed Conveyor, 1996 Durand-Raute Controls for Stacker, 1995 Cutler Hammer Freedom 21 Electro/Breaker Panel for Stacker**





**DURAND RAUTE 30 station hot veneer press**



**DURAND RAUTE 24 station hot veneer press**



**DURAND RAUTE 30 station hot veneer press**



**GLOBE 9' x 4' hydraulic cold press and DURAND hot press line**



**GLOBE 9' x 4' hydraulic cold press**



**CARGATE WESTMINSTER 10' x 4' cold/hot press line**



**CARGATE WESTMINSTER 10' x 4' hydraulic cold press**

### **PRESS LINE # 1**

**CARGATE WESTMINSTER Cold Press #1 w/ Pre-Press, 10' x 5', Infeed Conveyor System w/ 2 Chain Cross Transfer, 12' x 10', Durand 24 Platen Veneer Hot Press w/ Platen size 114" x 54", Hydraulic Charge Unit w/ 24 Platen Discharge Unit, Semi-Automatic Outfeed Unit, Electric/Hydraulic Scissor Lift w/ Roller Conveyor 6' x 2'**

### **PRESS LINE # 2**

**GLOBE Cold Press w/ Pre Press 9' x 4', 1996 Durand Raute 30 Platen Veneer Hot Press w/ Platen size - 114" x 54", 2002 Spartek Automatic Hydraulic Infeed System w/ Scissor Lift, 2 Suction Cap., Durand Raute Automatic Press Loader/Unloader w/ 30 Sheet Capacity System, Hydraulic Sheet Stacker w/ Scissor Lift, Outfeed Roller, 30 Sheet, 6' x 3', 1996 Cutler Hammer Freedom Electro/Breaker Panel**

**This brochure is only a partial listing. PLEASE VISIT OUR WEBSITE**



# AUTOMATIC SAWING, SANDING & COMPOSING LINES AVAILABLE



GLOBE trim saw line



GLOBE trim saw line



DURAND RAUTE veneer core composing line



DURAND RAUTE veneer core composing line



HASHIMOTO veneer core composing line



Load system for TIMESAVER sanding line



Unload for TIMESAVER sanding line



View of TIMESAVER 2 head top and bottom sanders



**2 AVAILABLE**

View of TIMESAVER 2 head top and bottom sanders

## GLOBE TRIM SAW LINE

**GLOBE TRIM** Saw Line (1996) w/ Control Room, Globe Automatic Feeder w/ Infeed Conveyor, Globe First Pass 48" Double Trim Saw, Globe Second Pass 96" Double Trim Saw, 1998 Globe 8 Station Wheel Type Panel Turner, Globe 20' Outfeed Conveyor System w/ Stacker, Globe Spoil Board Outfeed System size - 9' x 4', Cutler Hammer 9800 Electrical/Breaker Panel

## DURAND RAUTE SANDING LINE

**DURAND RAUTE** Sanding & QC Line w/ Control Booth, Chain Infeed Conveyor size - 11' x 5', 3 Chains, Automatic Scissor Lift Feeder w/ Platform 6' x 3', Roller Conveyor w/ Spoilboard Kick Out size - 10' x 5', 3 Chain, Transport Belt Conveyor w/ (2) Edge Sanders, conveyor 20' x 4', 2 Belts, 1996 Timesavers 452-5PBT, 2 Head Pass Through Bottom Sander, Transport Belt Conveyor size - 10' x 4', 2 Belts, 1996 Timesavers 452-5PBT, 3 Head Top Sander, Belt Conveyor Transport w/ Accumulator Lift, conveyor 16' x 4', 2 Belts, Grading QC System w/ Control Booth, conveyor 9' x 3', 2 Belts, Durand Raute Automated Sorting and Stacking System w/ 5 Section Stacking System, 2003 Samuel Multiply Nailing Pattern Printer w/ Main Print Head and 25 Secondary Print Heads, Operators Controller



# LARGEST PLYWOOD MILL FOR SALE IN YEARS! MUST ATTEND!



Large cross cut saw



**5+ AVAILABLE**

Partial view of veneer stitchers available



Partial view of the veneer putty line



**2008**

**BLACK 8' glue spreader**



**CONVEY** stacking system



**BRUKS 50HP chipper**



View of scissor tables



**2 AVAILABLE**

**HEESEMAN LSM8, 5 head CNC sander**



**HEESEMAN LSM8, 5 head CNC sander**



Partial view of rolling shop carts available

**60+ METAL CARTS & TRANSPORT BOXES AVAILABLE; 25+ HOPPERS AVAILABLE, SCISSOR LIFTS & MUCH MORE!**

**CONTACT 416.962.9600 TO CONSIGN EQUIPMENT AT AN UPCOMING AUCTION**



# HUGE OFFERING OF CHIPPERS, BLOWERS & DUST COLLECTORS AVAILABLE!



CLARK high speed abort gates



Chip filtration system



Large cross cut saw



Chip filtration system



CLARK high speed abort gates



Partial view of wood hogs and blowers



WSM 4032B1 debarker line wood hog



BLOWER engineering blower



NORTHERN blower



Fine dust collection system



Blower



Large trim saw

## DUST COLLECTION

Dust Collector, Debarker Cyclone, 16' Dia., 2000 Murphy Dust Collector w/ 125 hp. Northern Blower, Bag House #3, and Fines, 12' Dia., Airlock, Screw Conveyor, 30' x 14' Dia., 2002 Cutler Hammer Freedom 21 Electro/Breaker Panel w/ PLC Control System for Debarking Line, Dust Collection System Ducting, 6 - Clarke's High Speed Abort Gates, Clarke's Backdraft Dampers, Blowers, Dust Collector, Bag House #1, Chipper Bin, Simon Day Dust Collector, Bag House #2, 50 Hp, Clarkes Pyro Guard Spark Detection System

**LARGE OFFERING OF DUST COLLECTORS,  
CHIP DELIVERY SYSTEMS & BLOWERS!**

**TO SCHEDULE AN AUCTION CONTACT 416.962.9600**



# MASSIVE OFFERING OF BUILDING SUPPORT EQUIPMENT AVAILABLE

200 HP



2 AVAILABLE

View of waste veneer and core chipping line



FORANO chip bin with screen



Hydraulic log splitter



Hydraulic power pack



Hydraulic power pack



5+ AVAILABLE

Partial view of **COMPAIR** air compressors



Electrical switchgear



HUGE QTY AVAILABLE

Electrical switchgear



Electrical switchgear



Electrical switchgear

**LIVE WEBCAST powered by**



**INSPECTION IS WEDNESDAY, AUGUST 6  
FROM 9:00 A.M. TO 5:00 P.M.  
OR CALL 416.962.9600 TO ARRANGE AN  
ALTERNATE INSPECTION TOUR OF THE FACILITY**

**This brochure is only a partial listing. PLEASE VISIT OUR WEBSITE**



# MACHINE TOOLS, FABRICATING EQUIPMENT & GRINDING DEPARTMENTS



CMC engine lathe



SOFIA engine lathe



GOCKEL knife grinder



REFORM knife grinder



PIRANHA ironworker



Overarm milling machine



FREEJOTH  
geared head drill



Grinding equipment



ALGOMA hydraulic  
shop press



10+ AVAILABLE

Partial view of welders available



LINCOLN RANGER digital  
generator welder



MILLER welder



HOBART welder

SUBSCRIBE TO OUR E-NEWSLETTER TO RECEIVE NOTIFICATIONS OF ALL OUR UPCOMING AUCTIONS!  
[www.corpassets.com/newsletter-signup](http://www.corpassets.com/newsletter-signup)

FOR MORE DETAILED LISTINGS AND PHOTOS. [www.corpassets.com](http://www.corpassets.com)



## LARGE OFFERING OF ROLLING STOCK & MATERIAL HANDLING AVAILABLE



**10+ AVAILABLE**

View of **TOYOTA** forklifts up to 7,000 LBS



**PETIBONE C-204-G** wheel loader



View of **VOLVO L180** wheel loaders



**JLG** platform lift



**CASE** skid steer



**GEHL** turbo skid steer



**DODGE RAM (2010)**

View of vehicles available



**TENNANT** floor sweeper



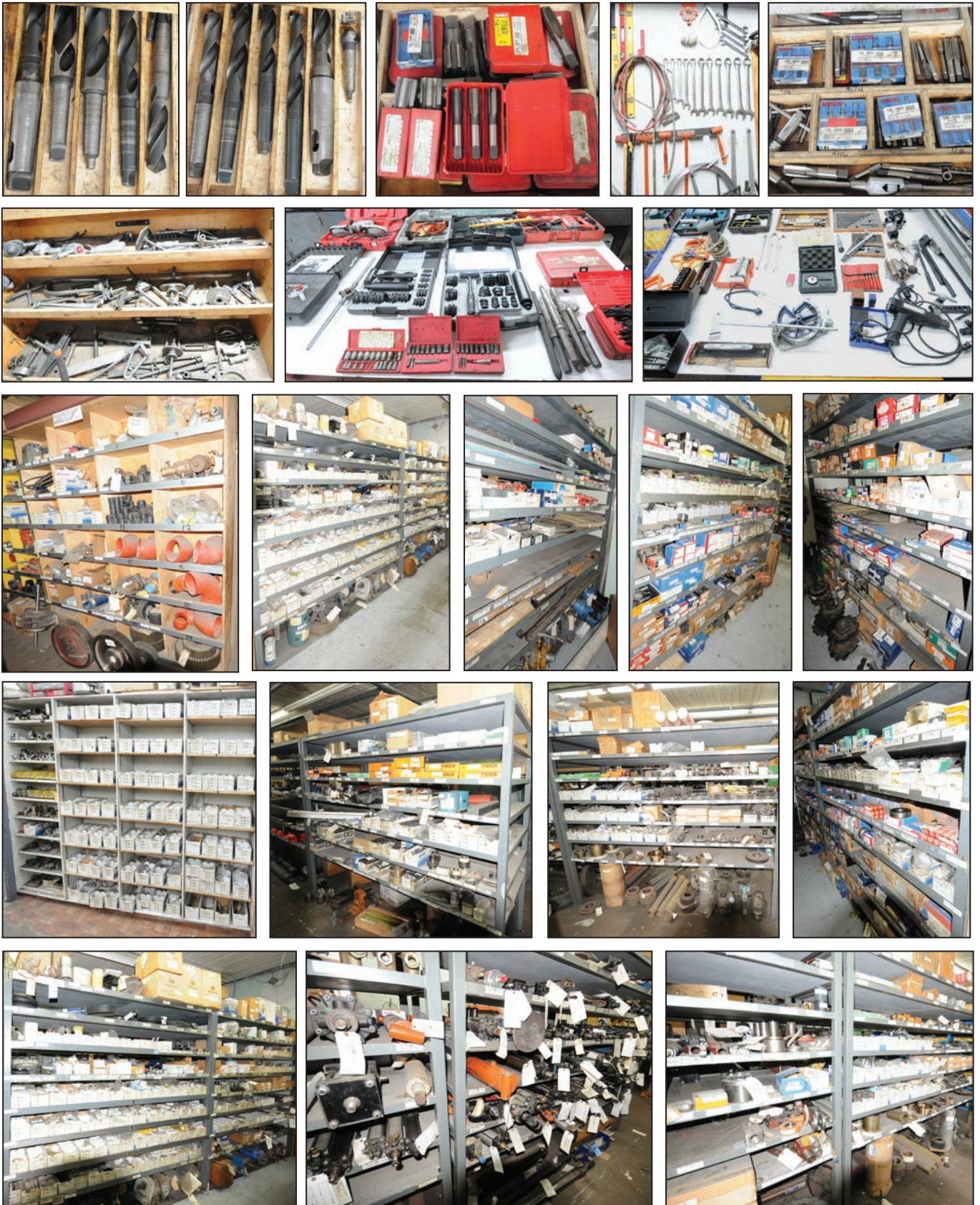
**GENIE & SKYJACK** lift platforms

**COMPLETE MACHINE SHOP** consisting of lathes, mills, saws, ironworkers, welders, grinders & more! **LARGE OFFERING OF SPARE MACHINE PARTS, ACCESSORIES & WOOD LOG INVENTORY;** **HUGE SCRAP OPPORTUNITY CONSISTING OF:** miles of heavy chain conveyor, stacking and delivery systems, **HUGE MOTOR INVENTORY,** miles of copper cable, scrap machinery and yard equipment, huge transformers & switchgear inventory, & **MUCH MORE!**

**CONTACT 416.962.9600 TO CONSIGN EQUIPMENT AT AN UPCOMING AUCTION**

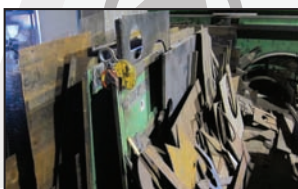
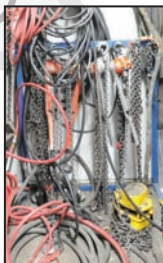


# MASSIVE MULTI-MILLION DOLLAR STORES INVENTORY AVAILABLE!



**TO SCHEDULE AN AUCTION CONTACT 416.962.9600**





**NEW CHAIN**



Huge inventory of spruce and poplar logs

All auctions are  
ONLINE & ONLINE

## UPCOMING AUCTIONS

New auctions added to our website regularly!

LIVE WEBCAST  
powered by:

Bidsolver.com

MINE JEFFREY INC.  
**MAJOR 1500+ LOT SALE!**  
Complete Heavy Maintenance Division of a Large Canadian Mine  
Asbestos, Quebec, Canada  
August TBD, 2014

SUBSCRIBE TO OUR E-NEWSLETTER TO RECEIVE  
NOTIFICATIONS OF ALL OUR UPCOMING AUCTIONS!

[www.corpassets.com/newsletter-signup](http://www.corpassets.com/newsletter-signup)

## AUCTION DETAILS

### INSPECTION

Wednesday, August 6, 2014 from 9:00 A.M. to 5:00 P.M. and morning of auction to start of auction.

### REMOVAL

Small items: Friday, August 8, 2014 by 5:00 P.M.  
Remaining items: Friday, August 29, 2014 by 5:00 P.M.

### PAYMENT

Please visit our website for details at  
**[www.corpassets.com](http://www.corpassets.com)**  
A Buyer's Premium will apply at this sale.



We

Accept

Please visit our website for specific terms and conditions may apply.

### TERMS

Corporate Assets Inc. assumes no liability for errors or omissions in this brochure. Corporate Assets Inc. expressly reserves the right to determine the manner of conducting the auction as it may deem appropriate. All subject to prior sale.

## APPRAISAL SERVICES

What's the real value of your equipment? If you require a detailed appraisal for banking, insurance, or internal purposes, consult with the certified experts at Corporate Assets Valuations. We provide appraisal services anywhere in the world for all types of industrial manufacturing and processing equipment.

- We will appraise one machine or your complete plant
- Going Concern, Fair Market or Liquidation Values

Call us in complete confidence today with your requirements.

Phone: (416) 962-9600  
Fax: (416) 962-9601  
Email: [appraisals@corpassets.com](mailto:appraisals@corpassets.com)

## AUCTION CONDUCTED BY CORPORATE ASSETS INC.

For further information contact us at:  
74 Berkeley Street

Toronto, Ontario, Canada M5A 2W7  
Tel: (416) 962-9600 • Fax: (416) 962-9601  
Email: [info@corpassets.com](mailto:info@corpassets.com)

Web: [www.corpassets.com](http://www.corpassets.com)

**Toronto • Montreal • Chicago**

MEMBER IN  
GOOD STANDING

