

**CORPORATE
ASSETS INC**

**MULTI-MILLION DOLLAR
PRECISION MACHINING EVENT!**

PUBLIC AUCTION

TOOLING TECHNOLOGIES INC.



**WORLD CLASS OFFERING OF EXCEPTIONALLY WELL MAINTAINED,
LARGE CAPACITY & LATE MODEL CNC MACHINERY**

DATE

TIME

LOCATION

Tuesday, August 26, 2014

10:00 A.M. CDT

10179 So. 57th Street,
Franklin, Wisconsin, USA 53132

This auction is
ONSITE & ONLINE

CORPORATE ASSETS INC

LIVE WEBCAST powered by

"Let Our Experience Be Your #1 Asset"™



www.corpassets.com • 416.962.9600 • info@corpassets.com

LATE MODEL & HIGH PRECISION 6 & 5 AXIS CNC MACHINING CENTERS



FPT DINO EVOLUTION fixed portal type CNC machining center

30 position tool magazine



FPT STINGER fixed portal type CNC machining center

30 position tool magazine

FIXED PORTAL 6 & 5 AXIS CNC MACHINING CENTERS

FPT (2004) DINO EVOLUTION 5 axis fixed portal type CNC machining center with HEIDENHAIN HE 530 SP CNC control, 118" X 47.2" table, travels; X-110.2", Y-86.6", Z-39.4", 6600 lbs max table load, 56.3" between columns, 47.2" max under cross beam, TULCE TVS 10 2 axis direct drive planetary head, speeds to 18000 RPM, HSK 63 taper, 30 ATC, high pressure coolant, chip conveyor s/n DV2804042

FPT (2005) STINGER 6 axis fixed portal type CNC machining center with HEIDENHAIN HE 530 SP CNC control, 47.2" X 39.4" rotary table w/ .001° min. table index,, travels; X-68.9", Y-55", Z-24", 17636 lbs max table load, 65" between columns, 8.1" – 31.7" table surface to spindle nose, TULCE 2 axis direct drive planetary head, speeds to 22000 RPM, HSK 63 taper, 30 ATC, high pressure coolant, chip conveyor s/n SV1705014

This brochure is only a partial listing. PLEASE VISIT OUR WEBSITE

LARGE CAPACITY & PRISTINE CNC HORIZONTAL BORING MILLS



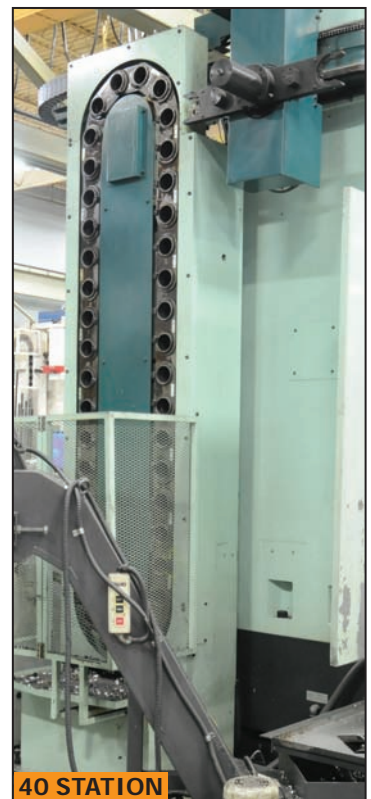
HNK HB 130 C CNC table type horizontal boring mill



View of tool changer & magazine



KURAKI KTB 11 WDXA CNC table type horizontal boring mill



View of tool changer & magazine

CNC TABLE TYPE HORIZONTAL BORING MILLS

HNK (2000) HB 130 C CNC table type horizontal boring mill with FANUC 16 M CNC control, 5.122" spindle, 118" x 55" table, 55" x 55" built in rotary table, travels: X -118.2", Y - 78.8", Z - 51.22", W - 27.58", 22000 lbs max table load, CAT 50 spindle taper, 40 ATC, speeds to 2500 RPM, 34.86 HP spindle motor, .001° min. table index, coolant, chip conveyor s/n 00016

KURAKI KTB 11 WDXA CNC table type horizontal boring mill with FANUC 15 M CNC control, 4.33" spindle, 63.04" x 55.16" rotary table, travels: X -78.8", Y - 59.1", Z - 57.13", W - 25.61", 14330 lbs max table load, CAT 50 spindle taper, 40 ATC, speeds to 2500 RPM, 20 HP spindle motor, .001° min. table index, coolant, chip conveyor s/n 3220

FOR MORE DETAILED LISTINGS AND PHOTOS. www.corpassets.com



KURAKI KTB 11 WA CNC table type horizontal boring mill



View of tool changer & magazine



HYUNDAI Hi-B110 CNC table type horizontal boring mill



View of tool changer & magazine

CNC BORING MILLS

KURAKI KTB 11 WA CNC table type horizontal boring mill with FANUC 16 M CNC control, 4.33" spindle, 55.16" x 47.28" rotary table, travels: X -66.98", Y - 49.25", Z - 45.31", W - 19.68", 14330 lbs max table load, CAT 50 spindle taper, 40 ATC, speeds to 3000 RPM, 20 HP spindle motor, .001° min. table index, coolant, chip conveyor s/n 4202

HYUNDAI (1998) Hi-B110 CNC table type horizontal boring mill with FANUC 15 M CNC control, 4.33" spindle, 63.04" x 55.16" rotary table, travels: X -78.8", Y - 59.1", Z - 57.13", W - 25.61", 14330 lbs max table load, CAT 50 spindle taper, 40 ATC, speeds to 2500 RPM, 20 HP spindle motor, .001° min. table index, coolant, chip conveyor s/n QF0045

HAVE A LEAD ON A NEW DEAL?
CORPORATE ASSETS INC. PAYS GREAT FINDER'S FEES!
CONTACT JOE LIZEWSKI OR RYAN HAAS AT 416.962.9600 FOR DETAILS.

This brochure is only a partial listing. PLEASE VISIT OUR WEBSITE

2000

144 OZ SHOT



ONLY 2500 HOURS!

FERROMATIK MILACRON 1100 ton plastic injection molder



CUMBERLAND 484 granulator



AEC PSA15 portable chiller



AEC WHITLOCK WD 90 desiccant dryer with DH hopper

PLASTIC EQUIPMENT

FERROMATIK MILACRON (2000) MM 1100-140 plastic injection molder with CINCINNATI MILACRON CAMAC XTREEM ST PLC control, 1100 ton clamping force, 82.7" X 61.2" platens, 60.2" X 45.3" between tie bars, 78.7" clamp stroke, 11.8" ejector stroke, 94.5" max. daylight, 144 oz shot s/n H32A0200001

CUMBERLAND 484 granulator with 16" opening s/n 421000-91503

AEC PSA15 portable chiller s/n 30E0417

AEC WHITLOCK WD 90 desiccant dryer with DH hopper, SLC autoloader s/n 31C0426

(2) **AEC TCU300** water temperature controllers s/n 30E5600, 30E5601

DME 12 zone temperature controller

CNC GUN DRILL

TECHNIDRILL (2000) 100-1250-10-Q-3A-CNC-72-48-60-72X606 CNC column type gun drilling machine with (2014 retrofit) LEMOINE G6 CNC control, .125"-1.250" drilling cap., 72" x 60" table, travels; (column travel) X-72", (spindle vertical travel) Y-48", (drilling stroke) Z-60", 150000 lb. max. table load, speeds to 5400 RPM, auxiliary counter bore, tapping & milling head, chip conveyor, high pressure coolant, 10 HP spindle drive s/n 7206-01/00

This auction is

ONSITE & ONLINE

LIVE WEBCAST powered by



2014 RETROFIT



LEMOINE G6 CNC CONTROL

TECHNIDRILL CNC column type gun drilling machine

2001



OKK DGM 400 high speed CNC vertical machining center



OKK MCV 520 CNC vertical machining center

2 AVAILABLE



OKK MCV 660 CNC vertical machining center



FADAL VMC 3016 CNC vertical machining center



3 AVAILABLE

WEBB 5VK CNC vertical milling machine

CNC MACHINING CENTERS

(2) **OKK MCV 660** CNC vertical machining center with NEOMATIC 635 CNC control, 67" X 25.5" table, travels: X - 59", Y - 26", Z - 25", 33.46" maximum distance spindle nose to table top, spindle speeds to 4500 RPM, CAT 50 taper, 4 ATC, 25 HP, coolant, chip conveyor s/n 470, 160

OKK (2001) DGM 400 high speed CNC vertical machining center with NEOMATIC 635 CNC control, 30.32" X 17.72" table, travels: X - 22.05", Y - 16.14", Z - 16.14", 22.05" maximum distance spindle nose to table top, spindle speeds to 30000 RPM, BT 30 taper, 16 ATC, 10 HP, TORIT 7.5 HP dust collector s/n 131

OKK MCV 520 CNC vertical machining center with FANUC OM CNC control, 51 3/16" X 21 5/8" table, travels: X - 40 5/32", Y - 20 15/32", Z - 22 18/16", 30" maximum distance spindle nose to table top, spindle speeds to 3500 RPM, CAT 50 taper, 30 ATC, 15 HP, coolant, chip conveyor s/n 1023

FADAL VMC 3016 CNC vertical machining center with FADAL control, 39" X 20" table, travels: X - 30", Y - 16", Z - 20", 24" maximum distance spindle nose to table top, spindle speeds to 8000 RPM, CAT 40 taper, 21 ATC, 20 HP, coolant, s/n 9307577

CNC MILLING MACHINES

(3) **WEBB 5VK** CNC vertical milling machine with PROTO TRAK M2 control, 10" X 50" table, 5 HP head, power draw bar s/n 867140, 834607, 867139

CNC LATHE

CLAUSING/COLCHESTER CNC 4000 lathe with GE FANUC O-T CNC control, 21.8" swing, 32.67" in gap, 80" between centers, 3.54" bore, 8 station tool turret, speeds to 1800 RPM, tailstock, s/n 4C0038



CLAUSING /COLCHESTER CNC 4000, flat bed lathe

CONTACT 416.962.9600 TO CONSIGN EQUIPMENT AT AN UPCOMING AUCTION



REIS TUS 130-100 die spotting press



Partial view of surface grinders available



CHEVALIER FSG 1224AD 12" X 24" hydraulic surface grinder



OKAMOTO ACC 28-60 EX MDI CNC high precision surface grinder

DIE SPOTTING PRESS

REIS (1998) TUS 130-100 die spotting press with 100 ton cap., 63" X 51" bed, 55" daylight opening, sliding & tilting table, tilting upper platten s/n 03 198 00

SURFACE GRINDERS

OKAMOTO ACC 28-60 EX MDI CNC high precision surface grinder with OKAMOTO PRECISION MDI control, 28" X 61" cap., 27" under a 20" dia. wheel, 5640 lbs. table cap., 20" X 3" X 8" wheel, wheel dresser s/n 37175

MITSUI 407 16" X 28" hydraulic surface grinder with wheel dresser, incremental downfeed, coolant s/n 493

OKAMOTO ACCUGAR-124N 12" X 24" hydraulic surface grinder with incremental downfeed, coolant s/n 6285

CHEVALIER FSG 1224AD 12" X 24" hydraulic surface grinder with wheel dresser, incremental downfeed, coolant s/n F186A002

(3) OKAMOTO 6-12 LINEAR manual surface grinders s/n 3769, 3771, 3772

CHEVALIER FSG 618M 6" X 18" manual surface grinder s/n A3806042

HARIG H 612 hydraulic surface grinder s/n 23342

HARIG SUPER 612 manual surface grinder s/n 16299

INSPECTION AND REMOVAL DETAILS

INSPECTION:

Monday, August 25 from 9:00 A.M. to 5:00 P.M. and morning of auction to start of auction.

REMOVAL:

Small items: Wednesday, August 27 by 5:00 P.M.
Remaining items: Friday, September 12 by 5:00 P.M.

TO SCHEDULE AN AUCTION CONTACT 416.962.9600

LARGE CAPACITY & WELL MAINTAINED TOOL ROOM EQUIPMENT



INGERSOLL C462 CNC sinker type EDM



INGERSOLL IG 1000 CNC sinker type EDM



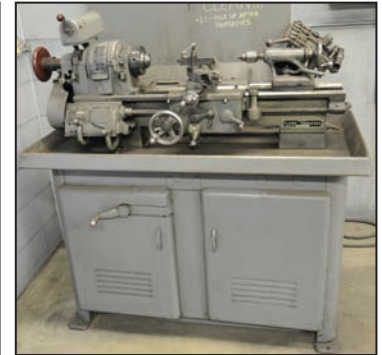
MITSUBISHI TFA 20 CNC wire type EDM



WASINO 22"/32" X 54" gap bed engine lathe



MORI SEIKI MH1500 24" X 60" engine lathe



SOUTH BEND 12" X 24" tool room lathe



BRIDGEPORT vertical milling machine



YOSHIDA YRD 1050 4' radial arm drill



YASDA YBM 80J horizontal jig borer

MACHINE SHOP EQUIPMENT

WASINO 22/32" X 54" gap bed engine lathe with 2 .25" bore, speeds to 1800 RPM, threading s/n 5358

MORI SEIKI MH1500 24" X 60" engine lathe with 3.25" bore, speeds to 1200 RPM, threading, coolant, TRAK DRO s/n 2177

SOUTH BEND 12" X 24" tool room lathe s/n 20708R

SUPERMAX YCM 16VS vertical milling machine with 9" X 50" table, 3 HP head s/n 86-07786

BRIDGEPORT SERIES 2 vertical milling machine with 9" X 42" table, 2 HP head, speeds to 4500 RPM, ANILAM DRO s/n 211685

(4) **BRIDGEPORT vertical milling machine** with 9" X 42" table, 1.5 HP head, speeds to 2240 RPM, 24" X 24" rotary table, ANILAM DRO s/n 74-Y435

BRIDGEPORT vertical milling machine with 9" X 42" table, 1.5 HP head, speeds to 4200 RPM, s/n 210998

YOSHIDA YRD 1050 4' radial arm drill with 12" column dia., speeds to 1800 RPM, tilting box table, coolant s/n 4412025

YASDA YBM 80J horizontal jig borer with 32" X 24" table, speeds to 2240 RPM, 24" X 24" rotary table, ANILAM DRO s/n 74-Y435

WIRE & RAM TYPE ELECTRICAL DISCHARGE MACHINES

MITSUBISHI TFA 20 wire type EDM with MITSUBISHI CNC control, travels X-13.7", Y-19.6", Z-11.8", U- 1.25", V-1.25" work tank dimensions 32" x 42" x 12", 1763 lbs. maximum workpiece weight , s/n F2R1311

INGERSOLL C462 CNC sinker type EDM with ROTRON 3T control, 102.44" X 49" X 16" tank, 98.5" X 37.43" table, travels; X- 39.4", Y- 17.73", 20000 lbs table load s/n 571577

INGERSOLL IG 1000 CNC sinker type EDM with INGERSOLL control, 38" X 29" X 35" tank, travels; X- 27-186, Y- 31.1", Z-15.76", C axis s/n 571577

ELOX 8-26 sinker type EDM with 35" X 22" X 14" tank, 20" X 8" X 12" travels, ANILAM DRO s/n 052757

ELOX 8-2814 sinker type EDM with 48" X 22" X 14" tank, ANILAM DRO s/n 1694

ELOX ROYALE sinker type EDM with 35" X 24" X 19" tank s/n 063388

This brochure is only a partial listing. PLEASE VISIT OUR WEBSITE

HUGE OFFERING OF PRECISION MACHINE TOOL ACCESSORIES & MACHINES



ACRA KV-50 20" vertical bandsaw



WELLS 1316 swivel horizontal bandsaw



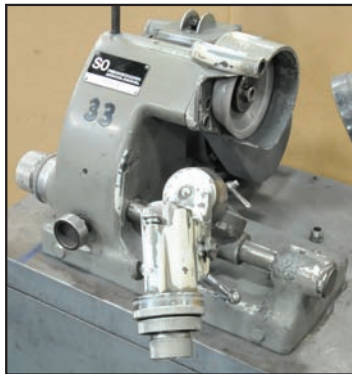
TMI HP 75 H frame hydraulic shop press with power pack



MILLER SYNCROWAVE 350 LX TIG welder



DEGEN TAM ejector pin cut-off & face grinder



DECKEL SO single lip cutter grinder



RIDGID 535 2" pipe threader with stand



Parts cleaner & air compressor



Partial view of angle plates available



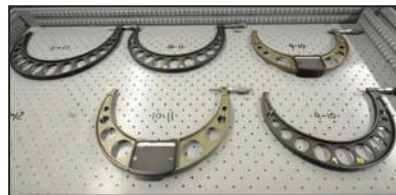
126" X 66 1/2" X 10" granite surface plate with stand



Partial view of tool holders available



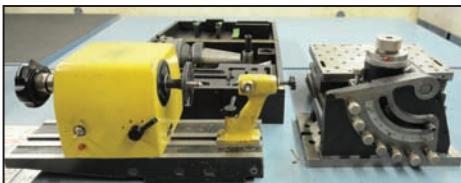
View of fixtures available



Partial view of inspection equipment available



Partial view of inspection equipment available



Partial view of machine accessories



Partial view of machine accessories

MACHINE SHOP EQUIPMENT

ACRA (2003) KV-50 20" vertical bandsaw with blade welder & grinder s/n V501054
WELLS 1316 swivel horizontal bandsaw with 13" X 16" cap. at 90°, 0°-60° swivel, infed conveyor, coolant s/n 6142

DECKEL SO single lip cutter grinder with 4" diameter cup wheel, 5/8" cap., 45° max. grinding angle, 4500 RPM s/n 79-20038

DEGEN (2001) TAM 25/600 ejector pin cut-off and face grinding machine with 1" max. dia, 24" max length s/n 2456

FOR MORE DETAILED LISTINGS AND PHOTOS. www.corpassets.com

NICE OFFERING OF LOW MILEAGE VEHICLES & FORKLIFTS AVAILABLE

2002



MERCEDES DIESEL ENGINE

FREIGHTLINER M2 flatbed truck



UP TO 14,000 LBS

View of CATERPILLAR LPG forklifts available



2003

DODGE RAM 2500 4 wheel drive pickup



TENNANT 5700 electric floor scrubber



View of WESTERN snow plow attachment

VEHICLES

FREIGHTLINER (2002) M2 flatbed truck with MERCEDES diesel engine, 6 speed transmission, 18' flat deck, dual rear wheels, approx. 117,000 mi. VIN 1FVACXCS03HK20511

DODGE (2003) RAM 2500 4 wheel drive pickup truck with 5.7 litre HEMI, extended cab, western snow plow attachment, approx 63000 miles VIN 1D7KU28D44J174420

MATERIAL HANDLING

CATERPILLAR T120C 14000 lbs. LPG forklift with 178" lift height s/n Z18N01438

CATERPILLAR GC 25K 4350 lbs. LPG forklift with 188" lift height, side shift s/n AT82D01403

FACTORY EQUIPMENT

TENNANT 5700 electric floor scrubber s/n 7401
Strapping caddies, ladders, lifting accessories,



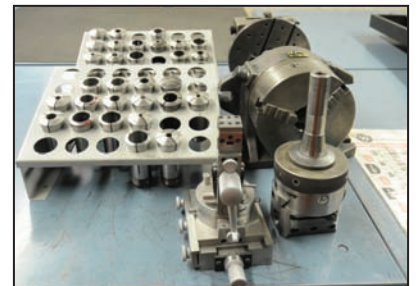
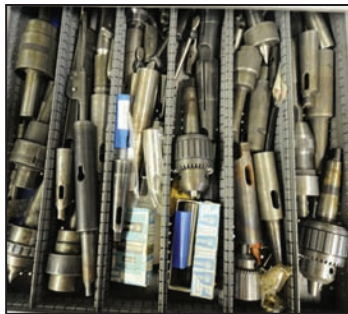
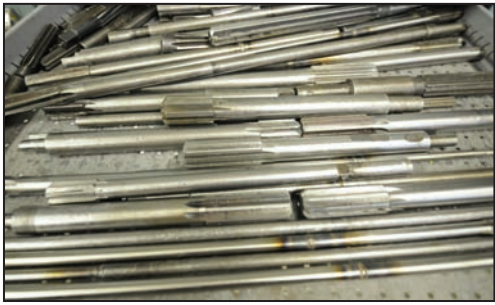
SUBSCRIBE TO OUR E-NEWSLETTER TO RECEIVE NOTIFICATIONS OF ALL OUR UPCOMING AUCTIONS!

www.corpassets.com/newsletter-signup



CONTACT 416.962.9600 TO CONSIGN EQUIPMENT AT AN UPCOMING AUCTION

HUGE OFFERING OF PRECISION TOOLING & CABINETS AVAILABLE



TO SCHEDULE AN AUCTION CONTACT 416.962.9600



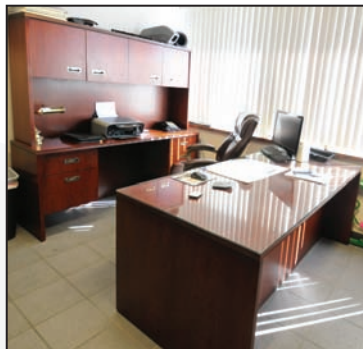
Partial view of **LISTA** tool cabinets available



Partial view of material available



View of board room furniture



View of executive room



Partial view of work stations and office equipment available

ALSO FEATURING:

GRANITE SURFACE PLATES UP TO 126" X 66 1/2" X 10", ANGLE PLATES UP TO 60" X 24", CHOP SAWS, ROTARY TABLES, VISES, HUGE ASSORTMENT OF TOOL HOLDERS, INSPECTION TOOLS, LISTA TOOL CABINETS & WORK STATIONS, PERISHABLE TOOLING, RAW MATERIAL INVENTORY, OFFICE EQUIPMENT, BUSINESS MACHINES & MUCH MORE!

AUCTION DETAILS

INSPECTION

Monday, August 25, 2014 from 9:00 A.M. to 5:00 P.M. and morning of auction to start of auction.

REMOVAL

Small items: Wednesday, August 27, 2014 by 5:00 P.M.

Remaining items: Friday, September 12, 2014 by 5:00 P.M.

PAYMENT

Please visit our website for details at

www.corpassets.com

A Buyer's Premium will apply at this sale.



We

Accept

Please visit our website as specific terms and conditions may apply.

TERMS

Corporate Assets Inc. assumes no liability for errors or omissions in this brochure. Corporate Assets Inc. expressly reserves the right to determine the manner of conducting the auction as it may deem appropriate. All subject to prior sale.

APPRAISAL SERVICES

What's the real value of your equipment? If you require a detailed appraisal for banking, insurance, or internal purposes, consult with the certified experts at Corporate Assets Valuations. We provide appraisal services anywhere in the world for all types of industrial manufacturing and processing equipment.

- We will appraise one machine or your complete plant
- Going Concern, Fair Market or Liquidation Values

Call us in complete confidence today with your requirements.

Phone: (416) 962-9600

Fax: (416) 962-9601

Email: appraisals@corpassets.com

AUCTION CONDUCTED BY CORPORATE ASSETS INC.

For further information contact us at:
74 Berkeley Street

Toronto, Ontario, Canada M5A 2W7

Tel: (416) 962-9600 • Fax: (416) 962-9601

Email: info@corpassets.com

Web: www.corpassets.com

Toronto • Montreal • Chicago

All auctions are
ONLINE & ONLINE

UPCOMING AUCTIONS

New auctions added to our website regularly!

LIVE WEBCAST
powered by:



MINE JEFFREY INC.
MAJOR 1500+ LOT SALE!
Complete Heavy Maintenance Division of a Large Canadian Mine
Asbestos, Quebec, Canada
August TBD, 2014

Former Assets of MARATHON PULP & PAPER
1000s OF LOTS TO BE SOLD!
Large Pulp & Paper Mill Auction!
Marathon, Ontario, Canada
September TBD, 2014

MEMBER IN
GOOD STANDING

