

**CORPORATE
ASSETS INC**

PUBLIC AUCTION

Surplus to the Ongoing Needs of a
TRADE-TECH INDUSTRIES

ONLY 140 HRS

2006



CUMMINS DGDB-5747383 600 volt, diesel generator



Large quantity of plastic injection support equipment

17,000 LBS.



BRODERSON IC-80 17000 lbs. carry deck mobile crane

70 TON



PIRANHA P70 hydraulic ironworker

**STRUCTURAL STEEL FABRICATING FACILITY
ALSO FEATURING PLASTIC INJECTION MOLDING EQUIPMENT**

DATE

TIME

LOCATION

Thursday, September 27, 2012

10:30 A.M. EDT

175 Lake Road
Bowmanville, Ontario L1C 4P8

"Let Our Experience Be Your #1 Asset"™

BID, BUY & GO!™
LIVE WEBCAST

WELL MAINTAINED MACHINE SHOP & FABRICATING EQUIPMENT



15" X 21" CAPACITY

ENTERPRISE 1550 gap bed engine lathe



CHEVALIER FSG 618M manual surface grinder



MAXIMART M606 60A sinker type EDM



LIAN FENG LFBS 20A double column type horizontal band saw



HYD MECH S20 horizontal band saw



TRADE TECH hydraulic shop press



TRADE TECH hydraulic shop press



PIRANHA P70 hydraulic ironworker



Partial view of sheet steel available

MACHINE SHOP

VOEST DA250/1.5 gap bed engine lathe with 20"/27" swing, 60" between centers, speeds to 1500 RPM, threading, MITUTOYO 2 axis DRO s/n 1-037/14878

ENTERPRISE 1550 gap bed engine lathe with 15"/21" swing, 50" between centers, 2" bore, speeds to 2000 RPM, threading, taper turning s/n J2010

DOALL V-36 vertical band saw s/n 36494543

CHEVALIER FSG 618M manual surface grinder s/n A3849011

MAXIMART M606 60A sinker type EDM with 24"x44"x16" tank, NEWALL 2 axis DRO, SYSTEM 3R tooling s/n FG1148-44M

ACADIAN 3' radial arm drill with 7" dia. column, speed to 2700 RPM, box table s/n n/a

PONCHO COMET-30 milling & drilling machine s/n 5486

SOCO MC 350 14" cold saw s/n n/a

FABRICATING EQUIPMENT

PIRANHA P70 hydraulic ironworker with 70 ton cap., 5" X 5" X .5" angle cutting, 6" X 1" flat bar s/n 944

LIAN FENG LFBS 20A double column type horizontal band saw with 20" cap., 1.6" blade width, infeed conveyor s/n 20295

HYD MECH (1999) S20 horizontal band saw with 13" x 20" cutting capacity, 60°-90° mitre cutting, 1" blade s/n 60996912

LARGE INVENTORY OF STEEL INCLUDING SHEET, PLATE MESH, ANGLES, AND TUBES.

PLEASE VISIT OUR WEBSITE FOR A MORE DETAILED LISTING.

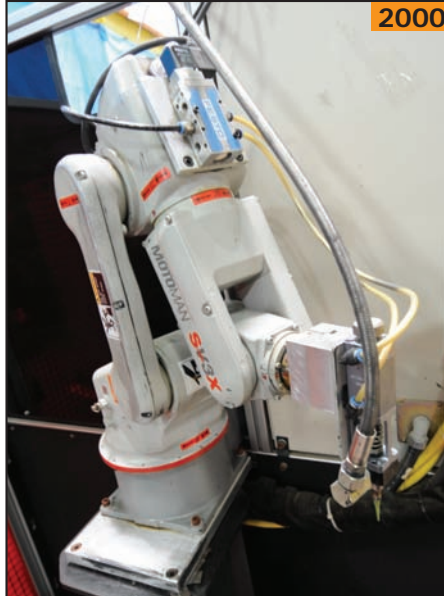
LARGE QUANTITY OF PLASTIC SUPPORT & WELDING EQUIPMENT AVAILABLE

2000



MOTOMAN robotic welding cell

2000



MOTOMAN SV3X 6 axis welding robot

PLASTICS EQUIPMENT

BATTENDELD BA 150 CD PLUS 17 ton plastic injection moulder with **UNILOG** 4000 control, 13" platens, s/n A15/01/1012101

DRI AIR ARID -X35 desiccant dryer with hopper s/n D9415

DRI AIR ARID -X 50 PD desiccant dryer s/n D9640

DRI AIR ARID -X 18 PD desiccant dryer s/n D10316

DRI AIR ARID -X 150 desiccant dryer s/n D6004

(2) **DRI AIR** ARID -X 75 desiccant dryer s/n D6411, D6410

DRI AIR AHM- 3 desiccant dryer with hopper s/n C12536

DRI AIR ARID -X200 desiccant dryer with hopper s/n D12691

(2) **DRI AIR** RH300 stainless steel drying hoppers s/n n/a

DRI AIR RH100 stainless steel drying hopper s/n n/a

DRI AIR RH60 stainless steel drying hopper s/n n/a

DRI AIR RH30 drying hopper s/n n/a

SPALTECH SDM-5 hopper s/n 0898

M-TEK CF-200PF central filter s/n 22739

M-TEK GXB-54 4 color gravimetric blender s/n G1608E

M-TEK VP 500 vacuum pump s/n 738

(3) **STERLCO** S8412-AX temperature controllers s/n 61654, 54144, 54137

MOLD-MASTERS SM0403200 006 hot runner temperature controller s/n 964738

THERMAL CARE AQUATHERM RA090905 temperature controller s/n 73520139704

BERG RA090805 thermolator s/n 34680029908

SPALTECH D-1209-5X temperature controller s/n 94-08-212

(9) **ADVANTAGE & MOKON** thermolators s/n 93784, 88687, 88219, 14305, 35165, 83452, 7000648, 700645, 31900

ROBOTIC WELDING CELL

MOTOMAN (2000) robotic welding cell consisting of: MOTOMAN SV3X 6 axis welding robot with YASNAC control, MOTOMAN MRP positioner, safety enclosure, light curtains s/n RY8246-0073-3-M

WELDING EQUIPMENT

THERMAL DYNAMICS PAK 10 plasma cutter s/n N50218A177036C

HYPERTHERM MAX 100 plasma cutter s/n 70-490

CANOX REDCAT II NT engine driven welder s/n KH546331

HOBART CYBERWELD 452 MIG welder with wire feed cables & gun s/n LA151807

LINCOLN CV 300 MIG welder with wire feed cables & gun s/n U100QS11048

LINCOLN CLASSIC 300 D engine driven welder s/n C1050900236

LINCOLN SQUARE WAVE TIG 255 TIG welder s/n with LINCOLN MAGNUM spool gun s/n n/a

(4) **LINCOLN** POWER MIG 255C MIG welder with wire feed cables & gun s/n U1060603125, U1040516857, U1040521877, U1060603134

LINDE V 650 MIG welder with wire feed cables & gun s/n F-77A04756

THERMAL ARC FABSTAR 4030 MIG welder with wire feed cables & gun s/n n/a

MILLER XMT 300 CC/TIG TIG welder with AUTO-LINK, MILLER COOLMATE 4 water cooler s/n KF789913

AIRBOX fume extractor

GULLCO 125 electrode oven

GULLCO 300 electrode oven



Partial view of dryers available



LINCOLN CLASSIC 300 D engine driven welder



M-TEK GXB-54 4 color gravimetric blender



STERLCO S8412-AX temperature controllers



LINCOLN POWER MIG 255C MIG welder



4 AVAILABLE

View of LINCOLN welders



20+ AVAILABLE

Partial view of welders available

PLEASE VISIT OUR WEBSITE FOR A MORE DETAILED LISTING.

LARGE QUANTITY OF POWER TOOLS AND CONTRACTOR EQUIPMENT



40 HP

ATLAS COPCO GA 30 rotary screw air compressor



2006

120 AMPS

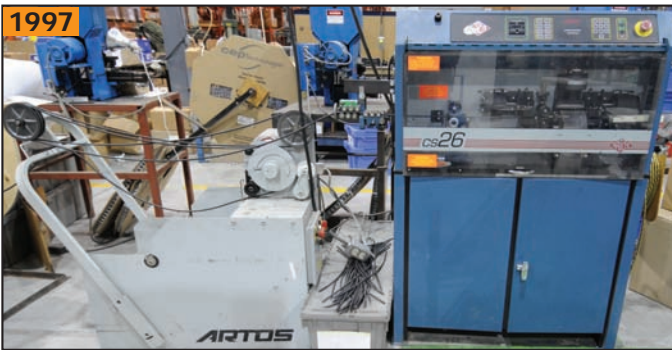
ONLY 140 HRS

CUMMINS DGDB-5747383 600 volt, diesel generator



4 AVAILABLE

KENCO 9703K-29 wire crimper



1997

ARTOS CS-26 wire cutting and stripping machine



DEVILBISS 10 HP air compressor

WIRE EQUIPMENT

ARTOS (1997) CS-26 single conductor, round cable wire cutting and stripping machine with feeder s/n 51691-001

(3) KENCO 9703K-29 wire crimpers s/n 5456, 5455, 5457

KENCO 3K-7-150 wire crimper s/n S43557

FACTORY EQUIPMENT

CUMMINS (2006) DGDB-5747383 600 volt, 120 AMPS, diesel generator s/n A060871625

ATLAS COPCO GA 30 40 HP rotary screw air compressor s/n A11-360831

DEVILBISS 10 HP tank mounted piston type air compressor s/n 17585

INGERSOLL RAND 10 HP tank mounted piston type air compressor s/n n/a

MOTREC E 250 electric personnel carrier s/n 1008391

UNITED LCH-20 tensile tester s/n 1105425

BRANSON 910-IW ultra sonic welder s/n n/a

EASY KLEAN EZ01020 pressure washer s/n 5202

BLUE M OV-490A-2 electric box oven s/n OV3-10861

CASSCO HPD 1500 marking press s/n 9786

CRIZAL EIC/0.5 0613 incline conveyor s/n CE298

JOHN DEERE L120 automatic, 48", 20 HP, lawn tractor

WOODWORKING

SHOPSMITH MARK V 5 in 1 tool with table saw, lathe, disk sander, jig saw, horizontal boring machine s/n n/a

KING 6"-9" combination belt & disk sander

BEAVER 10" table saw

ROCKFORD 10" table saw



EASY KLEAN EZ01020 Partial view of job site equipment available pressure washer



Partial view of power tools and hand tools available



Partial view of power tools, hand tools & portable equipment available



Partial view of shop ladders and lifting accessories available



Partial view of ladders available

HAVE A LEAD ON A NEW DEAL?

CORPORATE ASSETS INC. PAYS GREAT FINDER'S FEES!

CONTACT RYAN HAAS OR JOE LIZEWSKI AT 416-962-9600

PLEASE VISIT OUR WEBSITE FOR A MORE DETAILED LISTING.

LRG QUANTITY OF WELL MAINTAINED MATERIAL HANDLING EQUIPMENT AVAILABLE

35' SPAN



KONECRANES 5 ton single girder bridge crane



BRODERSON IC-80 carry deck mobile crane



TRADE TECH 150" dual axle utility trailer



View of box and flat bed trailers available



2 AVAILABLE

Partial view of 20' containers available



CLARK C500 LPG forklift



CATERPILLAR LPG forklift



JLG 2030 ES scissor lift

MATERIAL HANDLING

KONECRANES 5 ton single girder bridge crane with 35' span, top running bridge, underslung hoist, pendant control s/n n/a

BRODERSON IC-80 17000 lbs. carry deck crane with 37' max. boom extension, 360° rotation, 4 wheel steering s/n 502054

CLARK C500 120 12000 lbs. LPG forklift with 135" vertical lift s/n 915-135-3970

CATERPILLAR GP30K 6000 lbs. LPG forklift with 186" vertical lift s/n AT13D36471

TOYOTA FBE15 3000 lbs. electric forklift with 130" vertical lift s/n FBE15-10984

JLG 2030 ES scissor lift with 800 lbs. workload, 20' max. platform height s/n 0200115990

SHAW BOX 10 ton electric hoist with trolley s/n 5 82817

JET .5 ton electric hoist s/n 8S0548



MOTREC E 250 electric personnel carrier



JOHN DEERE L120 automatic, 48" lawn tractor



SHAW BOX 10 ton electric hoist with trolley

TRAILERS

RIO (2006) 12' dual axel utility trailer with 5400 kg GWR VIN 2R9ES4244T669103

CANADA TRAILERS 14' dual axel utility trailer with 7000 lbs, GWR VIN 2CPUSD2F27A009384

FRUEHAUF 45' tri- axle flat bed trailer VIN 2H8P04633BRO19901

TRAILERENT 48' tandem- axle box trailer VIN 2T9210125GA013146

FRUEHAUF 45' tandem- axle box trailer VIN 2H8V04525HS02520

MOND 25' tandem- axle box trailer converted to office/storage jobsite trailer VIN 2M9V52F22G1005112

TRADE TECH 150" dual axle utility trailer with cushion tires

APPRAISAL SERVICES

What's the real value of your equipment? If you require a detailed appraisal for banking, insurance, or internal purposes, consult with the certified experts at Corporate Assets Valuations. We provide appraisal services anywhere in the world for all types of industrial manufacturing and processing equipment.

Call us in complete confidence today with your requirements.

(416) 962-9600

appraisals@corpassets.com

PLEASE VISIT OUR WEBSITE FOR A MORE DETAILED LISTING.

VINTAGE CAR AND MOTORCYCLE

8550 KM

2004

1927

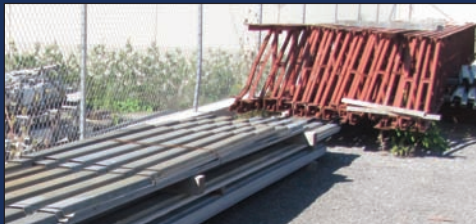


SUZUKI S40 BOULEVARD custom cruiser motorcycle



FORD MODEL T 2 door coupe & **CANADA TRAILERS 14' dual axle trailer**

LARGE INVENTORY OF STEEL INCLUDING, SHEET, PLATE MESH, ANGLES, TUBES, PROFILES & MORE!



AUCTION DETAILS

INSPECTION

Wednesday, September 26, 2012 from 9:00 A.M. to 5:00 P.M. EDT and morning of auction to start of auction.

REMOVAL

Small items: Friday, September 28, 2012 by 5:00 P.M. EDT
Remaining items: Friday, October 5, 2012 by 5:00 P.M. EDT

DIRECTIONS

Visit our website at www.corpassets.com, click on Upcoming Auctions: **Surplus to the Ongoing Needs of TRADE-TECH INDUSTRIES** button, click on Map tab and get directions by accessing the pop up address info box.

ACCOMMODATIONS & CAR RENTALS

Please visit our website for details at www.corpassets.com

PAYMENT

Please visit our website for details at www.corpassets.com
A Buyer's Premium will apply at this sale.

We Accept



Please visit our website as specific terms and conditions may apply.

TERMS

Corporate Assets Inc. assumes no liability for errors or omissions in this brochure. Corporate Assets Inc. expressly reserves the right to determine the manner of conducting the auction as it may deem appropriate. All subject to prior sale.

VEHICLES

SUZUKI (2004) S40 BOULEVARD custom cruiser motorcycle with 8550 km VIN P41A662101727

FORD MODEL T (1927) 2 door coupe

STEEL INVENTORY

Large inventory of steel including, sheet, plate mesh, angles, tubes, and profiles

MISCELLANEOUS

Hydraulic power pack, rolling shop ladders, lifting accessories, tool cabinets, steel work benches, portable air compressors, portable water pump, portable generator, cement mixer, horizontal band saw, job boxes, shop fans, drill press, pedestal grinder, huge assortment of electrical and gas powered tools & equipment, and more.

MEMBER IN
GOOD STANDING

