

**CORPORATE
ASSETS INC**

PUBLIC AUCTION

MIDA INTERNATIONAL INC.

BRAND NEW NEVER USED

2013



SHRED-TECH STE-100E dual shaft shredder

2011



GENOX heavy duty industrial copper wire processing line

APPROX. 300K NEW!

2007



CATERPILLAR 303C CR mini hydraulic excavator

2008



CATERPILLAR 242B skid steer loader

2 AVAILABLE

LATE MODEL COPPER WIRE PROCESSING AND SCRAP HANDLING FACILITY

DATE

TIME

LOCATION

Wednesday, August 21, 2013

10:30 A.M. EDT

565 Arvin Avenue
Stoney Creek, Ontario L8E 5N7

"Let Our Experience Be Your #1 Asset"™

BID, BUY & GO!™
LIVE WEBCAST

ALMOST NEW COPPER WIRE PROCESSING LINE & NEW SHREDDING LINE

2013



BRAND NEW NEVER USED!

NEW 200K!

SHRED-TECH STE-100E 100 HP industrial shredding line

2013



SHRED-TECH STE-100E dual shaft shredder

2011



APPROX. 300K NEW!

GENOX GUIDETTI heavy duty industrial copper wire processing line

2011



GUIDETTI WIRE 530 copper wire processing plant

2011



BUNTING MAGNETICS magnetic cross-belt conveyor

2011



GENOX GX4080 40100 50 HP single shaft shredder

UNIQUE
OPPORTUNITY
TO PURCHASE
ALMOST NEW
PROCESSING
EQUIPMENT!

LATE MODEL COPPER WIRE PROCESSING PLANT & SHREDDING LINE

SHRED-TECH (UNUSED 2013) heavy duty industrial shredding line consisting of: SHRED-TECH STE-100E 100HP (dual 50 HP motors) dual shaft shredder with 60" X 32" cutting chamber, (32) 16.25" dia. hardened alloy steel rotary knives, 86400 lbs max tooth force, 2" X 4-8" approx. shred size, 5 tons/hr approx throughput rate, 16.5' X 36" variable speed in feed conveyor, 18' X 36" out feed conveyor s/n 100E-D693-13

GENOX (2011) heavy duty industrial copper wire processing line consisting of: GENOX (2011) GX4080 40100 50 HP single shaft shredder with 48.5" X 31.5" cutting chamber, (35) hardened alloy steel rotary knives s/n G110202, variable speed in feed conveyor, BUNTING MAGNETICS magnetic cross-belt conveyor for continuous over-conveyor separation of ferrous materials from non-ferrous materials, GUIDETTI WIRE 530 copper wire processing plant with automatic feeding of the shredded material coming from the shredder, forced dosing system, (3) rotary blades and (2) stationary blades, transport and separation of the granulated copper, refining and compacting system for remaining material after the first separation, pneumatic transport for refined and compacted material, vibrating dry separator for insulation and copper de-dusting and self cleaning filtering system s/n 115301110014

TO SCHEDULE AN AUCTION CONTACT 416.962.9600

VERY LATE MODEL FORKLIFTS & CONSTRUCTION EQUIPMENT



MOFFET M50 truck mount forklift



2010 CATERPILLAR 216B skid steer loader



CATERPILLAR attachments



2007 OMEGA LIFT 6000 lbs rough terrain telehandler forklift



2003 OMEGA LIFT 6000 lbs rough terrain high reach forklift



JOHN DEERE 450CA crawler loader with backhoe attachment



625 HRS 2012 CATERPILLAR 5000 lbs LPG forklift



615 HRS 2012 CATERPILLAR 4700 lbs LPG forklift



2293 HRS 2012 CATERPILLAR 4700 lbs LPG forklift



J.D.J 5x8.5 heavy duty hydraulic dump tandem axle trailer



2002 J.C. TRAILERS tri axle heavy equipment trailer



TOYOTA 7FGU40 8000 lbs LPG forklift



Rotary forklift attachment



KOMATSU 2650 lbs LPG forklift

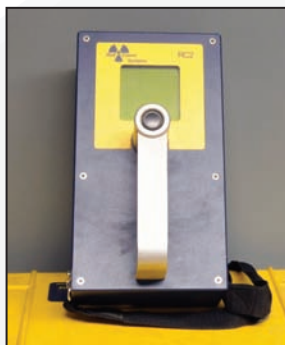


NISSAN 4000 lbs LPG forklift

REGISTER EARLY AT WWW.CORPASSETS.COM TO PARTICIPATE IN THIS SALE!

TO SCHEDULE AN AUCTION CONTACT 416.962.9600

GREAT OFFERING OF PROCESSING AND PLANT SUPPORT EQUIPMENT



RAD COM RC2 handheld radiation detection system



LUKAS LSI 510 hydraulic cutter with power pack



GENSCO 320 12" hydraulic alligator shear



2012 DELTAX GSX 2010 wire stripper



2012 10 HP KAESER rotary screw air compressor



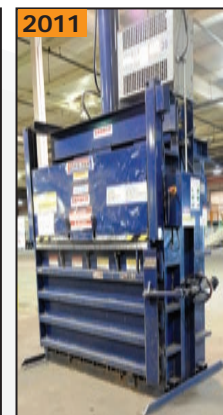
250 LBS ENGINEERED LIFTING SYSTEMS vacuum lifter



2013 350 LBS GORBEL free standing jib arm



50 TON CAROLINA CBP 5500 hydraulic shop press



2011 MAX PAK hydraulic vertical baler



2008 IPS hydraulic vertical baler



Vertical tank mounted air compressor



Partial view of shop equipment available



Partial view of welders available



Partial view of tools available



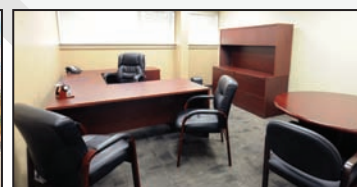
Partial view of dumping hoppers available



Partial view of baskets available



Partial view of totes available



Partial view of executive office furniture available

ALSO:

POWERFIST MIG 136 MIG welder, **LINCOLN A225** arc welder, **THERMAL DYNAMICS CUTMASTER 51** plasma cutter, **SEARS CRAFTSMAN** chop saw, (2) **CARDINAL 210** digital platform scales, **ZEBRA** label printer, pump trucks, steel work benches, rolling shop ladders, adjustable pallet racking, fans, hand tools, power tools, office furniture and **MUCH MORE!**

AUCTION DETAILS

INSPECTION

Tuesday, August 20, 2013 from 9:00 A.M. to 5:00 P.M. and morning of auction to start of auction.

REMOVAL

Small items: Thursday, August 22, 2013 by 5:00 P.M. EDT
Remaining items: Thursday, August 29, 2013 by 5:00 P.M. EDT

PAYMENT

Please visit our website for details at www.corpassets.com
A Buyer's Premium will apply at this sale.

We

Accept

Please visit our website as specific terms and conditions may apply.



TERMS

Corporate Assets Inc. assumes no liability for errors or omissions in this brochure. Corporate Assets Inc. expressly reserves the right to determine the manner of conducting the auction as it may deem appropriate. All subject to prior sale.

MEMBER IN
GOOD STANDING



Printed in Canada. ©2013 CORPORATE ASSETS INC. ALL RIGHTS RESERVED.