

PUBLIC AUCTION

**CORPORATE
ASSETS INC**

BREMNER FARMS LTD.

10+ VEHICLES AVAILABLE



PETERBUILT tandem axle tractor

30+ TRACTORS AVAILABLE



FORD 5640 POWERSTAR SL 4 wheel drive tractor

20+ AVAILABLE



SIMPLICITY gas powered snow blowers

100'S OF NEW ATTACHMENTS



KUHN EL32-150 rotary tillers

40+ AVAILABLE



Partial view of tractor mounted snow blowers

**MAJOR 2000 LOT SALE!
COMPLETE INVENTORY OF A 40 YEAR OLD
MARITIME FARM EQUIPMENT DISTRIBUTOR**

AUCTION LOCATION

DATE & TIME

INSPECTION LOCATIONS

Miramichi Agricultural Exhibition Association
24 Church Street, Miramichi, NB E1N 3A8

Saturday, March 9, 2013
9:30 A.M. AST

505 S Napan Road, Napan, NB E1N 4W4
& Highway 11, Napan, NB E1N 3A7

"Let Our Experience Be Your #1 Asset"™

**BID, BUY & GO!™
LIVE WEBCAST**

LARGE QUANTITY OF LATE MODEL VEHICLES & TRAILERS AVAILABLE



PETERBUILT tandem axle tractor



125,000 KM

GMC C6500 flatbed truck



FORD F350 XL SUPER DUTY flatbed truck



FORD F150XL pickup truck (22,000 KM)



FORD F150XL pickup truck



FORD ECONOLINE E350 SUPER DUTY cube van



CHEVROLET panel van



FORD ECONOLINE E150 cargo van



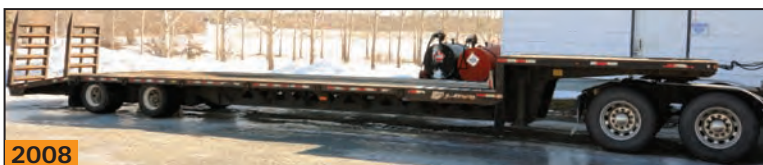
FORD ECONOLINE E250 cargo van



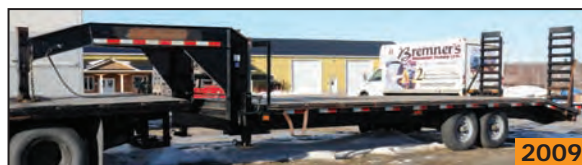
CHEVROLET 3500 SERIES cargo van



KING 13' tandem axle utility trailer



BWS MFG. EZ-LOAD 46' tandem axle gooseneck trailer



KAUFMAN G DELUX 24' tandem axle gooseneck trailer



MFG UNKNOWN 16' tandem axle utility trailer



LINKLETTER 25' triaxle trailer



40' shipping container

This brochure is only a partial listing. PLEASE VISIT OUR WEBSITE

HUGE ASSORTMENT OF TRACTORS & ACCESSORIES AVAILABLE



FORD 5640 POWERSTAR SL 4 wheel drive tractor



MASSEY FERGUSON 3090 2 wheel drive tractor



NEW HOLLAND 4835 4 wheel drive tractor



INTERNATIONAL 2250 2 wheel drive tractor



FORD 2000 2 wheel drive tractor



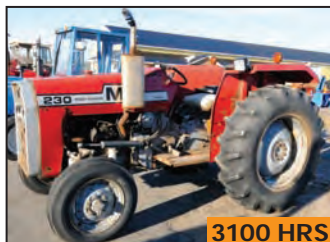
FORD 1700 2 wheel drive tractor



INTERNATIONAL 240 UTILITY 2 wheel drive tractor



INTERNATIONAL 434 2 wheel drive tractor



MASSEY FERGUSON 230 2 wheel drive diesel tractor



FORD 3000 2 wheel drive tractor



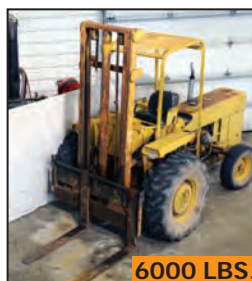
FORD 3000 2 wheel drive tractor



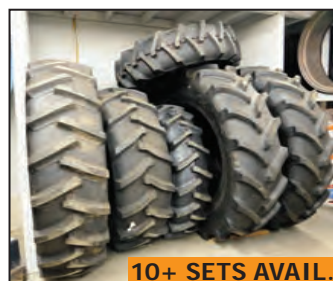
FORD CM274 4 wheel drive diesel tractor



NEW HOLLAND 586G outdoor forklift



MASSEY FERGUSON outdoor forklift



Partial view of tractor tires available



NEW HOLLAND L553 skid steer loader



Partial view of tractor cabs available



YAMAHA VENTURE 700 TRIPLE snowmobile

HAVE A LEAD ON A NEW DEAL? CORPORATE ASSETS INC. PAYS GREAT FINDER'S FEES! CONTACT US AT 416.962.9600

FOR MORE DETAILED LISTINGS AND PHOTOS. www.corpassets.com

HUGE ASSORTMENT OF "NEW" SNOW RELATED EQUIPMENT



40+ AVAILABLE

Partial view of tractor mounted snow blowers



PRONOVOST PUMA 74 tractor mounted snow blower



PRONOVOST PUMA 74 tractor mounted snow blower



PRONOVOST PUMA 74 tractor mounted snow blower



PRONOVOST PUMA 74 tractor mounted snow blower



PRONOVOST P-620 tractor mounted snow blower



PRONOVOST P920 tractor mounted snow blower



WOODS SS84-2 double auger tractor mounted snow blower



7 AVAILABLE

TORO electric power shovels



TORO electric power shovels



20+ AVAILABLE

SIMPLICITY P1738E gas powered snow blower



SIMPLICITY gasoline powered snow blowers



5 AVAILABLE

Tractor mounted shovel



TUFLINE TB2-84 box scraper



15+ AVAILABLE

Partial view of tractor mounted bucket attachments



HARDY 950 transportable log loader



KONGSKILD 800 field cultivator



New spare parts

This brochure is only a partial listing. PLEASE VISIT OUR WEBSITE

HUGE ASSORTMENT OF "NEW" LAWN & GARDEN EQUIPMENT



NEW HOLLAND MY 19 lawn tractor



NEW HOLLAND GT22A lawn tractor



NEW HOLLAND MY 16 lawn tractor



NEW HOLLAND LS45 lawn tractor



NEW HOLLAND MY 19 lawn tractor



NEW HOLLAND LS35 lawn tractor



SIMPLICITY REGENT 20 HP 38" riding mower



NEW HOLLAND G4020 riding mower



NEW HOLLAND LS55 lawn tractor



NEW HOLLAND LS45 lawn tractor



NEW HOLLAND MY 19 lawn tractor



NEW HOLLAND LS35 lawn tractor



NEW HOLLAND LS25 lawn tractor



NEW HOLLAND LS55 lawn tractor



NEW HOLLAND LS55 lawn tractor



MTD 1238 38" riding mower



NEW HOLLAND mower bag attachment



SCAG 36 ADVANTAGE 36" walk behind lawnmower



TORO TURBO FORCE 40 40" walk behind lawnmower



WOODS BB600X mower



WOODS 9697 ditch bank mower



WALCO FM72RDMC finishing mower



WALCO FM72RDMC finishing mower



MK MARTIN W6MC rotary mower



BUSH HOG SQ184 cutter/brush mower



BUSH HOG SQ172 cutter/brush mower



KUHN EASYPRED1219 spreader

FOR MORE DETAILED LISTINGS AND PHOTOS. www.corpassets.com

ENORMOUS OFFERING OF EQUIPMENT! SOMETHING FOR EVERYONE!



LITTLE WONDER gasoline powered leaf blower

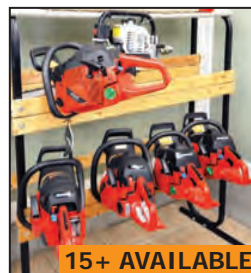


Miscellaneous yard equipment



15+ AVAILABLE

View of weed wackers



15+ AVAILABLE

View of chainsaws



View of chainsaws



View of gas motors



View of 6.5 HP gas motor



ECHO BEARCAT CH45540 gasoline powered chipper



ECHO BEARCAT 70530 gasoline powered chipper



SPEECO SPILTMASER 22 ton towable log splitter



SPEECO SPILTMASER 22 ton towable log splitter



OREGON 22 ton towable log splitter



SIMPLICITY 5514 gas powered chipper



HOTSY 980SS hot water pressure washer



HOTSY 680SS hot water pressure washer



6 AVAILABLE

LIFAN 8000E 7KW gasoline powered generator



WINCO 6000 gasoline powered generator



LIFAN 6500E 6.5KW gas powered generator



5.5 HP

DELTA air compressor



5 HP

EAGLE air compressor

IMPORTANT INFORMATION REGARDING THIS SALE!

**SALE DATE: SATURDAY, MARCH 2, 2013 AT 9:30 A.M AST (WEATHER PERMITTING, PLEASE CALL TO CONFIRM)
ALTERNATIVE SALE DATE: SATURDAY, MARCH 9, 2013 AT 9:30 A.M. AST**

This brochure is only a partial listing. PLEASE VISIT OUR WEBSITE

LARGE DEPARTMENT OF "NEW" SPARES & FACTORY EQUIPMENT

HUGE NEW INVENTORY AVAILABLE! SPARES, BATTERIES, NEW SPARE FLUIDS & MUCH MORE!



HUGE QTY AVAILABLE

Partial view of tool cabinets



CLARKE mig welder



MILLER 252 mig welder



NEDERMAN
fume extractor



Rolling A frame hoist



View of shop tooling



View of shop tooling



View of power tools



View of shop equipment



Battery
charger



View of parts washer and shot
blast cabinet



View of pneumatic tools



View of tractor counterweights



Office furniture



View of shop equipment

FOR MORE DETAILED LISTINGS AND PHOTOS. www.corpassets.com



PARCEL 1

CONSISTING OF: 21.5 acres with 108' frontage on South Napan Road including (3) buildings. Building #1: Retail/industrial (2005) approximately 7776 sq ft; Building #2: Single storey storage/utility building (2006) approximately 5600 sq ft; Building #3: industrial/office building (mid 70s) approximately 9416 sq ft, parking in the centre of the property and along the eastern perimeter. Legal Description: PID #40074494, PID #40472219, 40074494, PAN #553725



PARCEL 2

CONSISTING OF: 0.80 acres with approximately 108' frontage on Hwy 11 including (2) buildings. Building #1: retail building approximately 2208 sq ft. Building #2: industrial building approximately 1120' sq ft with parking area. Legal Description: PID# 40056806, PID# 40054561



PARCEL 3

CONSISTING OF: 3.87 acres with 540' frontage on Hwy 11. Take out restaurant, approximately 923 sq ft with parking area. Legal Description: PID# 40498453, PID #40498446, PID #40328619



All auctions are

ONSITE

&

BID, BUY & GO!™
LIVE WEBCAST

UPCOMING AUCTIONS

New auctions added to our website regularly!

LIVE WEBCAST powered by

BID, BUY & GO!™
LIVE WEBCAST

Surplus to the Ongoing Needs of
SONOCO PLASTICS
Complete Late Model Extrusion & Thermoforming Facility
Cambridge, Ontario N1R 8B7
Thursday, February 21, 2013
10:30 AM EST

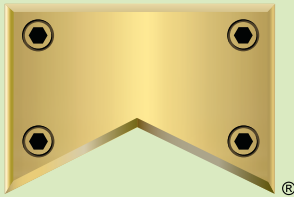
Surplus to the Ongoing Needs of a
LARGE STEEL TUBE MANUFACTURER
Complete Steel Tube Processing & Testing Facility
Huger, South Carolina 29450
Tuesday, February 26, 2013
10:30 AM EST

Surplus to the Continuing Operations of
PATTERSON INDUSTRIES
Large Capacity & Very Heavy Duty Fabricating Facility
Scarborough, Ontario M1L 3X4
Thursday, February 28, 2013
10:30 AM EST

DOUBLE K CONSULTING INC.
Late Model Multi-Axis
CNC Machining Facility
Gormley, Ontario L0H 1G0
Late March, 2013

MEMBER IN
GOOD STANDING





CORPORATE ASSETS INC

We offer the convenience of
3 Ways To Bid!

- Bid in Person
- Bid via Webcast
- Bid by Proxy

Discover the ease of
bidding with our

LIVE WEBCAST!

This feature gives you the ability to bid live by webcast from the convenience of your telephone from anywhere in the world! Visit our website for details.

Please register a minimum of 24 hours in advance to qualify to bid.



www.corpassets.com

Live Webcast bidding powered by



AUCTION DETAILS

BREMNER FARMS LTD.

INSPECTION

Friday, March 1, 2013 from 9:00 A.M. to 5:00 P.M. and morning of auction to start of auction.

INSPECTION LOCATIONS

505 S Napan Road, Napan, NB E1N 4W4
Highway 11, Napan, NB E1N 3A7

REMOVAL

Small items: Monday, March 4, 2013 by 5:00 P.M. AST
Remaining items: Friday, March 15, 2013 by 5:00 P.M. AST

DIRECTIONS

Visit our website at www.corpassets.com, click on Upcoming Auctions: **BREMNER FARMS LTD.** button, click on Map tab and get directions by accessing the pop up address info box.

ACCOMMODATIONS & CAR RENTALS

Please visit our website for details at www.corpassets.com

PAYMENT

Please visit our website for details at www.corpassets.com
A Buyer's Premium will apply at this sale.

We
Accept



Please visit our website as specific terms and conditions may apply.

TERMS

Corporate Assets Inc. assumes no liability for errors or omissions in this brochure. Corporate Assets Inc. expressly reserves the right to determine the manner of conducting the auction as it may deem appropriate. All subject to prior sale.

APPRAISAL SERVICES

What's the real value of your equipment? If you require a detailed appraisal for banking, insurance, or internal purposes, consult with the certified experts at Corporate Assets Valuations. We provide appraisal services anywhere in the world for all types of industrial manufacturing and processing equipment.

- We will appraise one machine or your complete plant
- Going Concern, Fair Market or Liquidation Values

Call us in complete confidence today with your requirements.

Phone: (416) 962-9600

Fax: (416) 962-9601

Email: appraisals@corpassets.com

AUCTION CONDUCTED BY CORPORATE ASSETS INC.

For further information contact us at:

2 St. Clair Ave. W., Suite 1002

Toronto, Ontario, Canada M4V 1L5

Tel: (416) 962-9600 • Fax: (416) 962-9601

Email: info@corpassets.com

Web: www.corpassets.com

Toronto • Montreal • Chicago