



**CORPORATE  
ASSETS INC**

**SHORT NOTICE SALE!**

# PUBLIC AUCTION

Surplus Assets of a  
**MAJOR TIER 1 AUTOMOTIVE SUPPLIER**

**2 AVAILABLE**



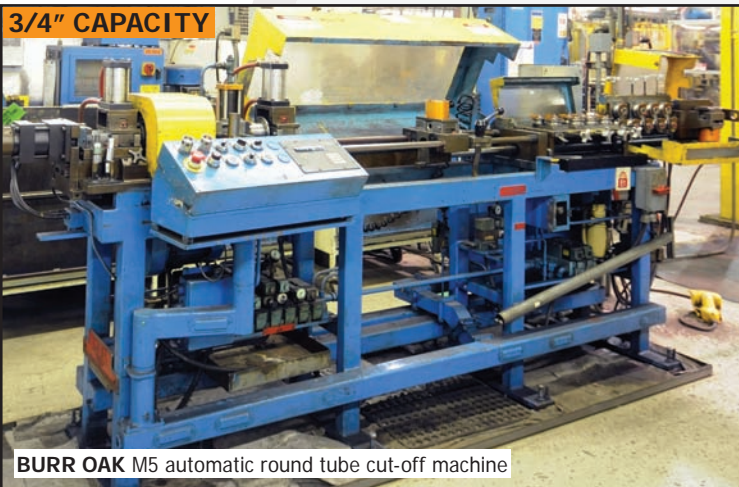
CINCINNATI TEST SYSTEMS dual station leak tester

**3 AVAILABLE**



ENGELHARD station, dual manifold, rotary brazing machine

**3/4" CAPACITY**



BURR OAK M5 automatic round tube cut-off machine

**1 1/4" CAPACITY**



WAUSEON tube end finisher

## LARGE OFFERING OF PRODUCTION MACHINERY

DATE

TIME

LOCATION

Tuesday, September 16, 2014

10:30 A.M. EDT

440 College Street East  
Belleville, ON, K8N 5T2, Canada

**This auction is**  
**ONSITE & ONLINE**

**CORPORATE ASSETS INC**

**"Let Our Experience Be Your #1 Asset"™**

www.corpassets.com • 416.962.9600 • info@corpassets.com

LIVE WEBCAST powered by





# HUGE OFFERING OF WELL MAINTAINED PRODUCTION MACHINERY



**ROGERS 20" mesh belt, brazing furnace with controls, exothermic generator, power supplies etc.**



**BURR OAK M5 automatic round tube cut-off machine**



**Decoiler for BURR OAK M5 tube cut-off**



**WAUSEON 2102 tube end finisher**



**MTD M96-H-1 hydraulic tube end former**



**ROGERS 4000 CFH exothermic generator**

**This brochure is only a partial listing. PLEASE VISIT OUR WEBSITE**





**ENGELHARD** 10 station, single manifold, rotary brazing machine



**ENGELHARD** 8 station, dual manifold, rotary brazing machine



**ENGELHARD** 12 station, single manifold, rotary brazing machine



**R.F. MOTE** 5 stage wash line



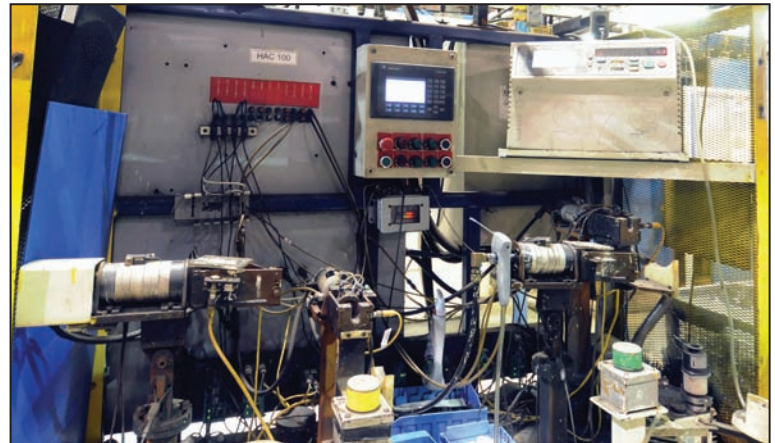
**NORDSON** NHC 4 powder coat booth



**CINCINNATI TEST SYSTEMS** dual station leak tester



**CINCINNATI TEST SYSTEMS** dual station leak tester



**CINCINNATI TEST SYSTEMS** leak test station

## **TUBE END FORMERS & FINISHERS**

**WAUSEON** 2102 tube end finisher with 2 ton tool closing force, 2.5 ton clamping force, 1 1/4" max dia s/n 3900-06

**MTD** M96-H-1 hydraulic tube end former with 3/4" max tube dia s/n 0601-02435

**MTD** M 71-H-3 hydraulic tube end former with 1 1/2" max tube dia

**BURR OAK** M5 automatic round tube cut-off machine with EATON PLC control, 3/4" max cap, two-plane tube straightener, 36" hitch feeder, chipless rotary cutoff unit

## **BRAZING & POWDER COAT LINES**

**ROGERS** (1991) MBF-500 natural gas fired, 20" mesh belt, brazing furnace with **ROGERS** 4000 CFH exothermic generator s/n 3626 OMB

**POWDER COAT PAINT LINE CONSISTING OF:** **R.F. MOTE** 5 stage wash line with 18" X 32" opening, (3) gas fired heated stages, (3) blowers & rinse; **R.F. MOTE** D1312-2 natural gas fired oven with 800000 BTU/HR, 180°F max temp., s/n 212 92-9256; **NORDSON** NHC 4 powder coat system with 12' non-conductive booth and canopy, (1) oscillator, (5) guns, **SURE COAT** controls, reclaim unit



# HUGE OFFERING OF WELDERS & WELDING MACHINERY AVAILABLE



**STENNECKEN RHD bender**



**Dual bowl feeders**



**ACCUTECH tube swaging machine**



**MOTOMAN ARC WORLD 6 axis robotic welding cell**



**MOTOMAN UP6 welding robot**



**WELDLINE AUTOMATION stem welder**



**WELDLINE AUTOMATION stem welder**

**4 AVAILABLE**



**LORS BMW200 5 KVA press type spot welder**



**LAKELAND dual head rotary seam welder**



**GT MACHINE aluminum can MIG welding machine**



**Internal View of GT MACHINE V229**

**2 AVAILABLE**

**SUBSCRIBE TO OUR E-NEWSLETTER TO RECEIVE NOTIFICATIONS OF ALL OUR UPCOMING AUCTIONS!**  
[www.corpassets.com/newsletter-signup](http://www.corpassets.com/newsletter-signup)

**This brochure is only a partial listing. PLEASE VISIT OUR WEBSITE**





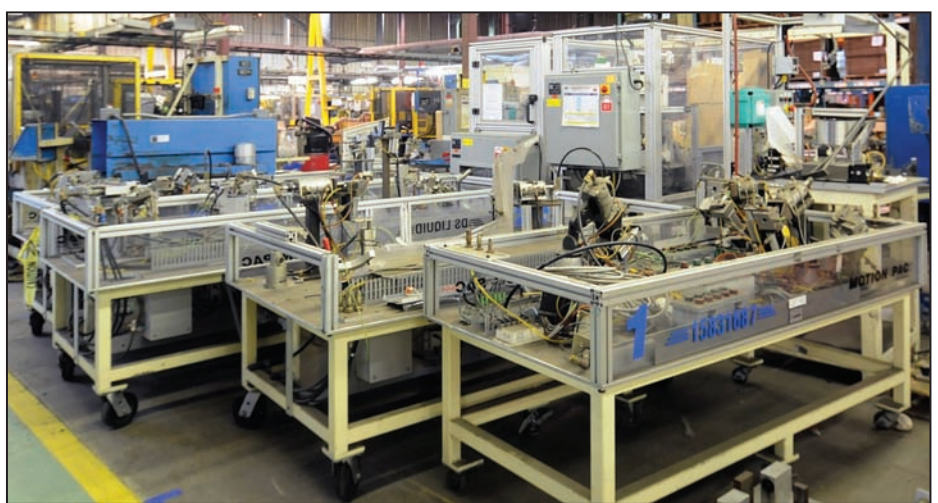
**BENDCO** outlet tube bender



**STENNECKEN** headfitting A tube benders



**BENDCO** inlet tube bender



**AMRA** seal assembly machines



**WAYNE TRAIL** combination bender



**BENDTECH** outlet tube bender



# LARGE QUANTITY OF FACTORY SUPPORT EQUIPMENT, COPPER CABLES & MUCH MORE!



**BERG** skid mounted chiller



**ATLAS COPCO** GA 75VSD rotary screw air compressor



**INGERSOLL-RAND** SSR EP75 rotary screw air compressor



Partial view of hydraulic power packs available



Partial view of hydraulic power packs available



View of high pressure vacuum pumps



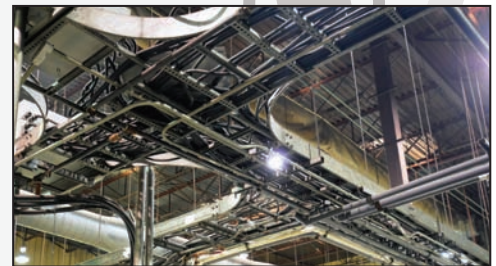
Large assortment of press dies available



**BISHAMON** EZ 30 3000 lbs pallet positioner



**BLUE GIANT** 6000 lbs pallet lift



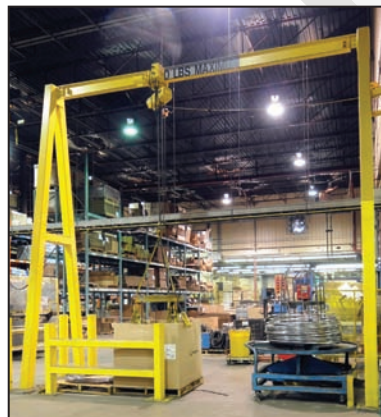
Partial view copper cabling in cable trays available



**PLYMOVENT** 10 HP dust collector



**PNEUMATECH** air dryer



1000 lbs gantry hoist system

## AUCTION DETAILS

### INSPECTION

Monday, September 15, 2014 from 9:00 A.M. to 5:00 P.M. and morning of auction to start of auction.

### REMOVAL

Small items: Wednesday, September 17 before 5:00 P.M.  
Remaining items: Tuesday, September 30 before 5:00 P.M.

### PAYMENT

Please visit our website for details at [www.corpassets.com](http://www.corpassets.com)  
A Buyer's Premium will apply at this sale.

We Accept



Please visit our website as specific terms and conditions may apply.

### TERMS

Corporate Assets Inc. assumes no liability for errors or omissions in this brochure. Corporate Assets Inc. expressly reserves the right to determine the manner of conducting the auction as it may deem appropriate. All subject to prior sale.

MEMBER IN  
GOOD STANDING

