

**CORPORATE  
ASSETS INC**

**MAJOR 1500 LOT SALE!**

# PUBLIC AUCTION

Surplus to the Ongoing Needs of  
**BEKAERT CANADA LTD.**



**300,000 SQ FT PC STRAND WIRE DRAWING  
& WIRE GALVANIZING FACILITY**

## AUCTION LOCATION

11041 Elevator Road  
Surrey, British Columbia V3V 3R8

## DATE & TIME

Wednesday, April 16, 2014  
9:00 A.M. PDT

## INSPECTION DETAILS

**PRE-INSPECTION AVAILABLE:**  
March 17 - 19 from 9:00 A.M. to 5:00 P.M.  
Please call 416.962.9600 for information.

"Let Our Experience Be Your #1 Asset" <sup>TM</sup>



View of lead bath and payoffs



View of wax system



View of lead bath



View of payoffs



View of payoffs



View of M&E down coilers



View of CEECO down coilers



View of CEECO TSFA spoolers



Overall view of line

## 30 WIRE GALVANIZING LINE

30 WIRE GALVANIZING LINE (MAJOR UPGRADES IN 2005) with 35mm wire pitch, 42,500 annual tonnage capacity (relative to diameter mix), ceramic refractory, zinc bath w/immersion burners ( i.e.e.), 30-122 FPM, 1.47-6.33mm diameter capacity, low & high carbon, static overhead PAYOFF w/motorized feeders and tensioning rollers, lead annealing heat treatment, 2 zones natural gas, water quench immersion bath, PICKLING: HCL enclosed (11.75m), fiberglass tank, heat by wire and steam-plc controlled water quenching, enclosed tank, fume control w/ water curtain, rinsing by 3 stage water curtain, air curtain wiping, immersion fluxing, electric immersion heating coils w/temp probe & controls, zinc bath comprised of a (10.5 x 2.2 x 1 m) ceramic refractory lined steel pan, 25 immersion tube burners, TAKEUP consists of 6 CEECO 550mm spoolers and 15 CEECO & M&E 26" down coilers.

**This brochure is only a partial listing. PLEASE VISIT OUR WEBSITE**



View of MRB downcoilers



View of annealing patenting furnace



View of overall patenting line



(6) INCONEL HOOKS AVAILABLE

Overall view of ROD COIL PICKLING LINE WITH CAN ENG ROD BAKER

## CONDOROIL IMPIANTI CR 7 FULLY AUTO. SULFURIC ACID RECOVERY UNIT

CONDOROIL IMPIANTI (NEW IN 2013 & STILL IN CRATE) (OVER 170K NEW) CR 7 fully automatic sulfuric acid recovery unit with 500L/HR processing capacity, feeding pump, filters, pre-chiller heat exchanger, (2) reactors, (30,000 KCAL/HR capacity) chiller, membrane pump, piping, electrical and automation equipment controls, stainless steel skid and walkways.

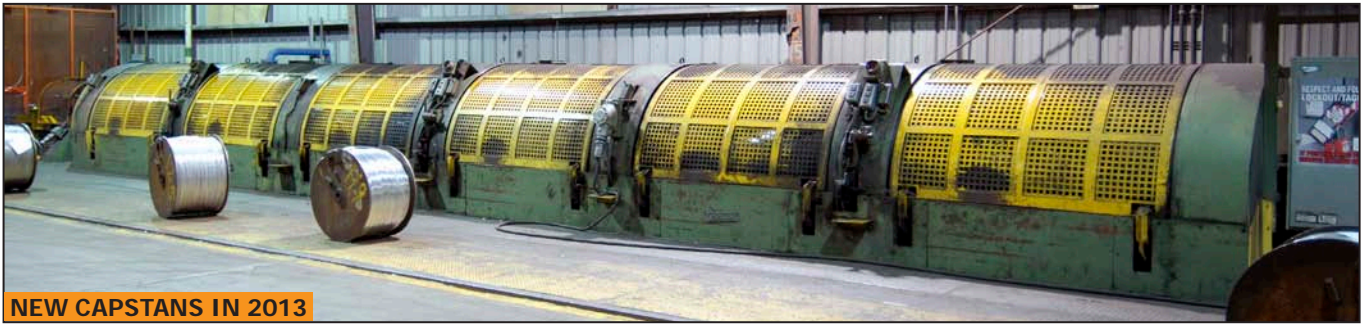
## WIRE PICKLING LINE WITH CAN ENG ROD BAKER

WIRE PICKLING LINE with CAN ENG rod baker, overhead crane load/unload system, (11) tanks, CAN ENG rod baker, (6) 90"L x 26" throat INCONEL hooks with 6000LB capacity, KSF CYCLE 600 acid recovery plant with 3.6 TPD capacity, sulphuric acid tank & spent sulphuric acid tank, fumes scrubber

## WIRE PATENTING LINE

WIRE PATENTING LINE with radiant tube fired patenting furnace, lead bath, .063"-.196" capacity, 20 wire lines, 16 ton/day processing capacity (.118" @10M/sec), 900c heating temperature, 500-600c lead bath temperature, natural gas burners, muriatic/hydrochloric acid cleaning tank with water curtain, phosphate coating tank and 18 position MRB down coilers.

## MIYAZAKI PC TUBULAR STRANDING & THERMO RELAXATION LINE



MIYAZAKI PC TUBULAR STRANDER



View of take-up



View of dual take-ups



View of **SHINKO** thermo relaxation/stabilizing line



View of **SHINKO** thermo relaxation/stabilizing line



View of controls and capstans



View of dual final take-ups

## MIYAZAKI TUBULAR STRANDER AND THERMO RELAXATION LINE

MIYAZAKI PC tubular stranding & thermo relaxation line with .375"-.60" capacity, 6+1 tubular strander, dual 62.5" capstans (NEW IN 2013), dual take-ups, .124"-.207" strand material diameter capacity, 56-74 m/min standard speeds, 300-450 RPM and 4.9"-7.8" standard pitch, COMPLETE WITH **SHINKO** wire stabilizer for low relaxation products with .374"-.598" strand diameter capacity, CEFI induction heating system (NEW IN 2004), 320KW, 400c material temperature, twin take-ups, 28.74" take-up bore diameter, 47.24" take up flange capacity, 2900KG winding capacity, 10-60 m/min take-up speed and 45 ton/day practical output. (**SHINKO** & **MIYAZAKI** may be sold separately)

**This brochure is only a partial listing. PLEASE VISIT OUR WEBSITE**

# LARGE CAPACITY BOW & TUBULAR STRANDING LINES



**.312" - .875" CAPACITY**

FWC 6+1 bow stranding line



**.375" - 318" CAPACITY**

STOLBERGER 6+1 bow stranding line



**NEW MAIN DRIVE IN 2006**

CEECCO 6+1 tubular stranding line



Twisting/straightening unit



Twisting/straightening unit



Twisting/straightening unit



View of spooling unit

SALE PROUDLY HELD IN CONJUNCTION WITH:



Wire Machinery

**MACHINERY INC.**

Fastener & Forming Equipment

[WWW.FHMACHINERY.COM](http://WWW.FHMACHINERY.COM)

194 Railroad Drive, Ivyland, PA 18974 USA

For technical questions, please contact

ED Krause at (215) 355-6641

[ed@fhmachinery.com](mailto:ed@fhmachinery.com)

## STOLBERGER 6+1 BOW STRANDING LINE

**STOLBERGER** 6+1 bow stranding line with .375" (3/8") max strand size, 1200 RPM, 452 kg spool capacity, 2.6" min lay length, 7.7" max lay length, 24"x15" spool size, 84"x60" max reel size, dual capstans, auto tensioner, auto gear change and SKALTECH take up.

## CEECCO 6+1 TUBULAR STRANDING LINE

**CEECCO** 6+1 tubular stranding line with 6 reel positions, (31" od, 18" oaw, 14" drum diameter, 7" arbor diameter) 800LB reel weight, (.062"- .220") strand material, 800 RPM max speed, 1.96" min lay range, 13.84" max lay control, 54 speed gearbox, 48" diameter grooved double capstan, 150 HP dc 460 v 60hz main drive (REPLACED IN 2006).

## FWC 6+1 BOW STRANDING LINE

**FWC** 6+1 bow stranding line with (.312" - .875") capacity, 750 RPM, 1125 KG spool capacity, 36"x19.25" spool size, 84"x 60" max reel size, FWC take up, 3.6" min lay length, dual capstans, 11" max lay length

**FOR MORE DETAILED LISTINGS AND PHOTOS. [www.corpassets.com](http://www.corpassets.com)**

# LATE MODEL KOCH WIRE DRAWING & SPOILING EQUIPMENT



(D27) KOCH 13 block wire drawing line



KOCH KHS 800 spooler



SIEMENS S5-115 PLC control



KOCH KEWS III-Z dead block



(D26) KOCH 14 block wire drawing line

## KOCH 13 BLOCK WIRE DRAWING LINE

(D27) KOCH (NEW 2001) 13 block wire drawing line with 8mm start diameter, 1.22-2.5mm finish diameter, KGT 4000/2, KGT 1600/2, KGT 1000/9, block 1+2 (30"), block 3+4 (26"), blocks 5-13 (22"), water & air cooled capstans, 75/60 HP SIEMENS A/C motors, 480V-60HZ, SIEMENS S5-115 PLC control, 1000-5000 FPM. KOCH KHS 800 spooler: 1.2-2.2 mm wire diameter, 5000 FPM, SIEMENS 50HP, 480V, 60HZ. KOCH KEWS III-Z dead block with 24" coiling block, 1.2-2.3 mm high carbon wire diameter, 5000 FPM, 480V, 60HZ.

## KOCH 14 BLOCK WIRE DRAWING LINE

(D26) KOCH (NEW 1998) 14 block wire drawing line with 6.5 mm start diameter, .8-1.5 mm finish diameter, KGT 1600/1, KGT 1250/2, KGT 800/11, high carbon, blocks 1-3 (24"), blocks 4-14 (18"), water cooled capstans, 50/40HP SIEMENS A/C motors, 480V-60HZ, SIEMENS S5-115 PLC control, 5600 FPM. KOCH KHS 800 spooler, .08-1.5mm wire diameter, 1000-5600 FPM, SIEMENS 40HP A/C motor, 480V, 60HZ.

**CONTACT 416.962.9600 TO CONSIGN EQUIPMENT AT AN UPCOMING AUCTION**

# LATE MODEL & HEAVY GAUGE KOCH WIRE DRAWING LINES



(D7) KOCH 7 block wire drawing line



(D22) MORGAN KOCH 9 block wire drawing line with KOCH KGT 47/1 predraw bullblock/ accumulator block



(D24) KOCH 9 block tunerline wire drawing line



KOCH KEWS IV-Z dead block



Secondary view of (D22) & spooler

## KOCH 7 BLOCK WIRE DRAWING LINE

(D7) KOCH (NEW 2000) 7 block wire drawing line with 8mm start diameter, 1.82-3.75mm finish diameter, KGT 2500/2, KGT1600/5, blocks 1+2 (30"), blocks 3-6 (26"), water and air cooled capstans, SIEMENS 58KW (75 HP) A/C motor, 460V, 60HZ, SIEMENS S5-115 PLC control, 400-3500 FPM. KOCH KEWS IV-Z dead block with 26" coiling block, inlet 2.0-4.1 mm wire diameter, 1.8-3.8mm outlet diameter, 3543 FPM, SIEMENS 58 KW (75HP) A/C motor, 460V.

## MORGAN KOCH 9 BLOCK WIRE DRAWING LINE

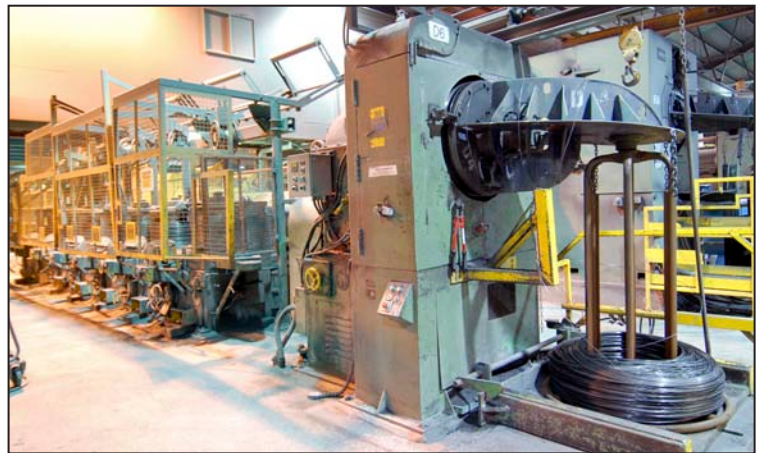
(D22) MORGAN KOCH 9 block wire drawing line with KOCH KGT 47/1 (NEW IN 2006) predraw bullblock/ accumulator block, 7-15mm high tensile start diameter, 2- 3mm finish diameter, block 1 (KGT 47/1), 48" capstan diameter, SIEMENS 129KW (175HP) A/C motor, 480V, 60HZ, SIEMENS S7- 400 PLC control , 300 FPM, block 2-8 (36"), 125HP DC motors, block 9 (30"), 125HP, 400-1800 FPM, tuner on first block & dancer on remaining.

## KOCH 9 BLOCK TUNERLINE WIRE DRAWING LINE

(D24) KOCH 9 block tunerline wire drawing line with 9mm high carbon start diameter, 1.65-3.38mm finish diameter, KGT 2500/2, KGT 1600/6, KGT 4000/1, block 1 (28"), blocks 2-9 (26"), block 1 75HP DC motor, blocks 2-9 (75HP), 55-65/55KW DC motors, 460V, 60HZ, spooler and dead block with 1000-4000 FPM.

TO SCHEDULE AN AUCTION CONTACT 416.962.9600

## (13) HI-DRAW & SHOWA WIRE DRAWING & SPOILING LINES



**LARGE OFFERING OF COMPLETE HI-DRAW AND SHOWA DRAWING LINES FROM 5-10 BLOCKS, SOME EQUIPPED WITH SINGLE & DOUBLE END SPOOLERS, ALL EQUIPPED WITH COILERS, CONTROLS & SAFETY GUARDING!**

**This brochure is only a partial listing. PLEASE VISIT OUR WEBSITE**

## HUGE OFFERING OF BUTT WELDERS, POINTERS, SPOOLERS & MORE!



LARGE OFFERING OF WIRE POINTERS, OVER 20 BUTT WELDERS, PAYOFF'S, TAKE-UP'S, WIRE STANDS, SPOOLERS, DEAD BLOCKS, CAPSTANS, & SPARE MACHINERY PARTS NEW AND REBUILT!

FOR MORE DETAILED LISTINGS AND PHOTOS. [www.corpassets.com](http://www.corpassets.com)

# MASSIVE OFFERING OF BOTH NEW & REBUILT SPARE PARTS, NEW DIES & MORE!

## COMPLETE HIGH PRECISION DIE POLISHING DEPARTMENT (PARALOC PRESSURE DIES/DIE HOLDERS AVAILABLE)



## MILLIONS OF \$ IN SPARES INVENTORY AVAILABLE!



CONTACT 416.962.9600 TO CONSIGN EQUIPMENT AT AN UPCOMING AUCTION

# LARGE OFFERING OF BUILDING SUPPORT EQUIPMENT AVAILABLE



**DELAYED DELIVERY**

Partial view of waste water treatment facility



**DELAYED DELIVERY**

Partial view of waste water treatment facility



**CLEAVER BROOKS** boiler system



**CLEAVER BROOKS** boiler system



**2011 UNUSED**

**ATLAS COPCO** QAS 90, 72KW generator



**ATLAS COPCO** GA 1107 air compressor



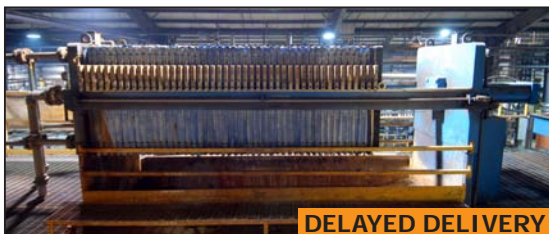
**ATLAS COPCO** GA 75 air compressor



**ATLAS COPCO** GA45 air compressor



**ATLAS COPCO** FD 380 air dryer



**DELAYED DELIVERY**

View of waste water treatment plant filter press



**TINIUS OLSEN** tensile tester



**TINIUS OLSEN** tensile tester

**TO PARTICIPATE ONLINE VIA WEBCAST, SIGN UP AT:**



**TO SCHEDULE AN AUCTION CONTACT 416.962.9600**

# THIS IS A UNIQUE OPPORTUNITY & AN EVENT NOT TO BE MISSED!



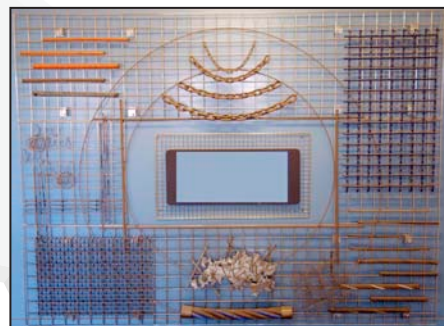
HI-VAC high pressure chip vac



Hydraulic coil compactor



Stretch wrapper



Sample board of light & heavy gauge material fabricated onsite



View of spare wires and air lines



Diesel powered generator



Partial view of strapping caddies



MILLER welder



MILLER welder



Partial view of welders available



ENERPAC hyd shop press



Partial view of rod payoffs



Partial view of stackable totes



Dumping hoppers



Partial view of coil stands available



Partial view of raw material

## AUCTION DETAILS

### INSPECTION

Tuesday, April 15, 2015 from 9:00 A.M. to 5:00 P.M. and morning of auction to start of auction.

### ON-SITE PRE-INSPECTION AVAILABLE:

Monday, March 17 to Wednesday, March 19, 2014

From 9:00 A.M. to 5:00 P.M.

Call 416.962.9600 to set up an appointment.

11041 Elevator Road,  
Surrey, British Columbia, CANADA V3V 3R8

### REMOVAL

Small items: Thursday, April 17, 2014 by 5:00 P.M.

Remaining items: Wednesday, April 30, 2014 by 5:00 P.M.

### DIRECTIONS

Visit our website at [www.corpassets.com](http://www.corpassets.com), click on Upcoming Auctions: Surplus to the Ongoing Needs of BEKAERT CANADA LTD. button, click on Map tab and get directions by accessing the pop up address info box.

### PAYMENT

Please visit our website for details at

[www.corpassets.com](http://www.corpassets.com)

A Buyer's Premium will apply at this sale.

We

Accept

Please visit our website as specific terms and conditions may apply.



### TERMS

Corporate Assets Inc. assumes no liability for errors or omissions in this brochure. Corporate Assets Inc. expressly reserves the right to determine the manner of conducting the auction as it may deem appropriate. All subject to prior sale.

PARTICIPATE ONLINE, REGISTER AT:



## LARGE OFFERING OF OVERHEAD 2-5 TON CRANE SYSTEMS ALSO AVAILABLE

All auctions are

ONSITE

&

ONLINE

## UPCOMING AUCTIONS

New auctions added to our website regularly!

LIVE WEBCAST powered by



MÉCANIQUE INDUSTRIELLE DE QUÉBEC  
Horizontal Boring, Vertical Turning  
& Machining Facility  
L'Anicenne-Lorette, Quebec G2E 5T5  
Tuesday, March 25, 2014 • 10:30 AM EDT

PRESTIGIOUS DOWNTOWN TORONTO HOTEL  
MAJOR 2 DAY EVENT! 4000+ LOT SALE!  
Toronto, Ontario M5S 2A2  
Friday, March 28, 2014 • 10:30 AM EDT  
Saturday, March 29, 2014 • 10:30 AM EDT

CHARTRAND EQUIPMENT  
Massive Late Model Construction & Mining Event!  
1000+ LOT SALE!  
Timmins, Ontario P4N 7C3  
Tuesday, April 22, 2014 • 10:00 AM EDT

SEAWAY MARINE & INDUSTRIAL INC.  
State of the Art Ship Building Facility  
2 DAY SALE! MASSIVE 4000 LOT EVENT!  
St. Catharines, Ontario L2M 0A2  
April, 2014

MEMBER IN  
GOOD STANDING



Printed in Canada. ©2014 CORPORATE ASSETS INC. ALL RIGHTS RESERVED.